

Anti-MYF5 Mouse Monoclonal Antibody [Clone ID: OTI2G5]

Catalog Number: M04040

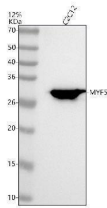
Overview

Product Name	Anti-MYF5 Mouse Monoclonal Antibody [Clone ID: OTI2G5]
Reactive Species	Human, Mouse, Rat
Description	Boster Bio MYF5 mouse monoclonal antibody, clone OTI2G5 (formerly 2G5). Catalog# M04040. Tested in IHC, WB. This antibody reacts with Human, Mouse, Rat.
Application	IHC, WB
Clonality	Monoclonal OTI2G5
Formulation	PBS (pH 7.3) containing 1% stabilizing protein, 50% glycerol and 0.02% sodium azide. This antibody is supplied in a stabilized formulation. Compatibility with conjugation reactions depends on the chemistry of the conjugation method used. For conjugation methods that are not compatible with the stabilizing components present in this formulation, a carrier-free antibody format is required.
Storage Instructions	Store at -20°C as received.
Host	Mouse
Uniprot ID	P13349

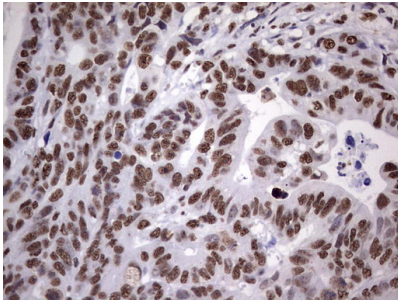
Technical Details

Immunogen	Full length human recombinant protein of human MYF5 (NP_005584) produced in E.coli.
Isotype	IgG1
Concentration	1 mg/ml
Purification	Purified from mouse ascites fluids or tissue culture supernatant by affinity chromatography (protein A/G)
Suggested Dilutions	WB: 1:2000 IHC: 1:150

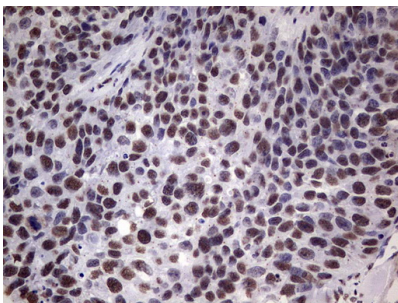
Anti-MYF5 Mouse Monoclonal Antibody [Clone ID: OTI2G5] (M04040) Images



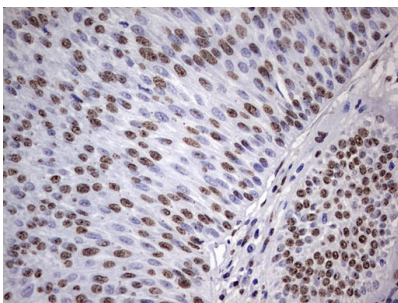
Western blot analysis of MYF5 using anti-MYF5 antibody (M04040). Electrophoresis was performed on a 5-20% SDS-PAGE gel at 70V (Stacking gel) / 90V (Resolving gel) for 2-3 hours. The sample well of each lane was loaded with 30 ug of sample under reducing conditions. Lane 1: mouse C2C12 whole cell lysates. After electrophoresis, proteins were transferred to a nitrocellulose membrane at 150 mA for 50-90 minutes. Blocked the membrane with 5% non-fat milk/TBS for 1.5 hour at RT. The membrane was incubated with mouse anti-MYF5 antigen affinity purified monoclonal antibody (Catalog # M04040) at 1:1000 overnight at 4°C, then washed with TBS-0.1%Tween 3 times with 5 minutes each and probed with a goat anti-mouse IgG-HRP secondary antibody at a dilution of 1:5000 for 1.5 hour at RT. The signal is developed using an Enhanced Chemiluminescent detection (ECL) kit (Catalog # EK1001) with Tanon 5200 system. A specific band was detected for MYF5 at approximately 28 kDa. The expected band size for MYF5 is at 28 kDa.



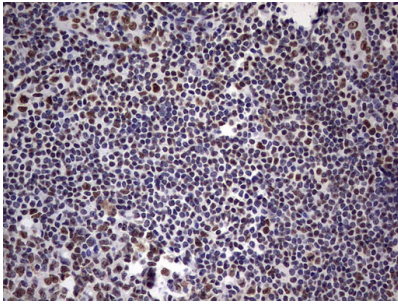
Immunohistochemical staining of paraffin-embedded Adenocarcinoma of Human colon tissue using anti-MYF5 mouse monoclonal antibody. (Heat-induced epitope retrieval by 1 mM EDTA in 10mM Tris)



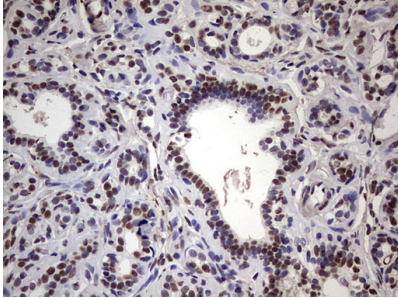
Immunohistochemical staining of paraffin-embedded Carcinoma of Human kidney tissue using anti-MYF5 mouse monoclonal antibody. (Heat-induced epitope retrieval by 1 mM EDTA in 10mM Tris)



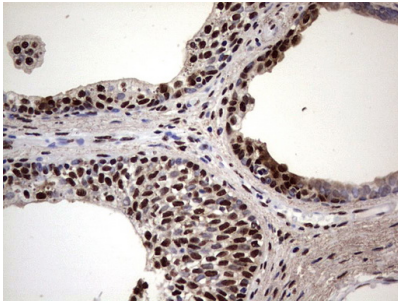
Immunohistochemical staining of paraffin-embedded Carcinoma of Human bladder tissue using anti-MYF5 mouse monoclonal antibody. (Heat-induced epitope retrieval by 1 mM EDTA in 10mM Tris)



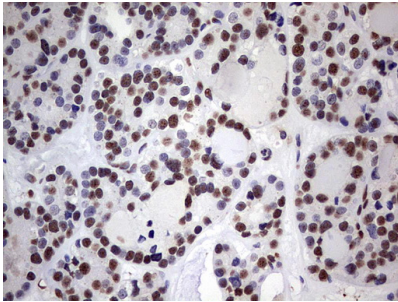
Immunohistochemical staining of paraffin-embedded Human tonsil within the normal limits using anti-MYF5 mouse monoclonal antibody. (Heat-induced epitope retrieval by 1 mM EDTA in 10mM Tris)



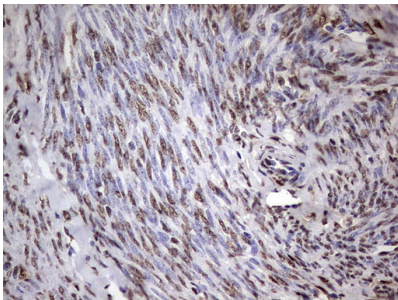
Immunohistochemical staining of paraffin-embedded Human breast tissue within the normal limits using anti-MYF5 mouse monoclonal antibody. (Heat-induced epitope retrieval by 1 mM EDTA in 10mM Tris)



Immunohistochemical staining of paraffin-embedded Carcinoma of Human prostate tissue using anti-MYF5 mouse monoclonal antibody. (Heat-induced epitope retrieval by 1 mM EDTA in 10mM Tris)

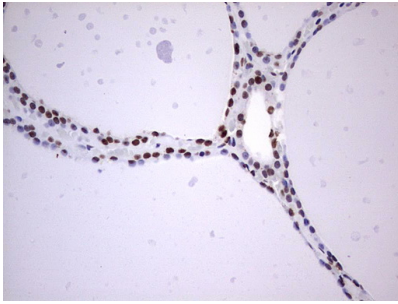


Immunohistochemical staining of paraffin-embedded Carcinoma of Human thyroid tissue using anti-MYF5 mouse monoclonal antibody. (Heat-induced epitope retrieval by 1 mM EDTA in 10mM Tris)

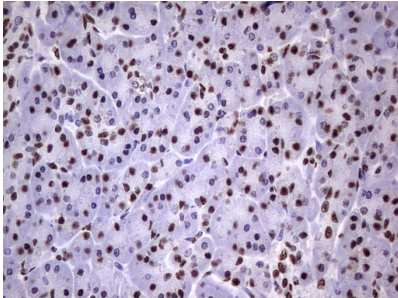


Immunohistochemical staining of paraffin-embedded Adenocarcinoma of Human endometrium tissue using anti-MYF5 mouse monoclonal antibody. (Heat-induced epitope retrieval by 1 mM EDTA in 10mM Tris)

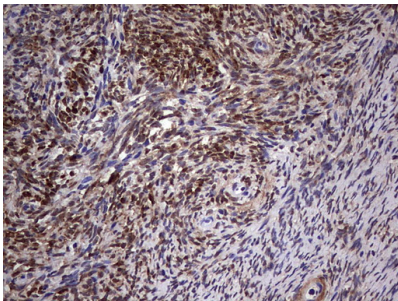
Immunohistochemical staining of paraffin-embedded Human thyroid tissue within the normal limits using anti-MYF5 mouse monoclonal antibody. (Heat-induced epitope retrieval



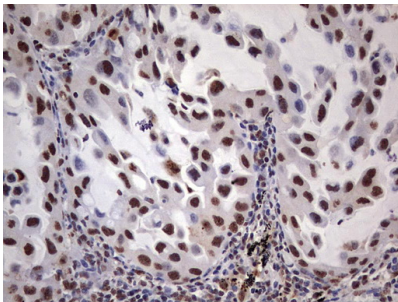
by 1 mM EDTA in 10mM Tris



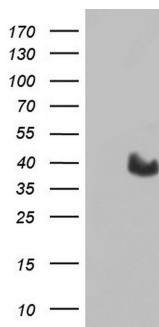
Immunohistochemical staining of paraffin-embedded Human pancreas tissue within the normal limits using anti-MYF5 mouse monoclonal antibody. (Heat-induced epitope retrieval by 1 mM EDTA in 10mM Tris



Immunohistochemical staining of paraffin-embedded Human Ovary tissue within the normal limits using anti-MYF5 mouse monoclonal antibody. (Heat-induced epitope retrieval by 1 mM EDTA in 10mM Tris



Immunohistochemical staining of paraffin-embedded Carcinoma of Human lung tissue using anti-MYF5 mouse monoclonal antibody. (Heat-induced epitope retrieval by 1 mM EDTA in 10mM Tris



HEK293T cells were transfected with the pCMV6-ENTRY control (Left lane) or pCMV6-ENTRY MYF5 (Right lane) cDNA for 48 hrs and lysed. Equivalent amounts of cell lysates (5 ug per lane) were separated by SDS-PAGE and immunoblotted with anti-MYF5.

Submit a review of this product to Biocompare.com to receive a \$20 Amazon.com giftcard! Your reviews help your fellow scientists make the right decisions. Thank you for your contribution.



Anti-MYF5 Mouse Monoclonal Antibody [Clone ID: OT12G5]

For Research Use Only. Not for use in diagnostic procedures.