

Anti-Protein LYRIC MTDH Monoclonal Antibody

Catalog Number: M04060-1

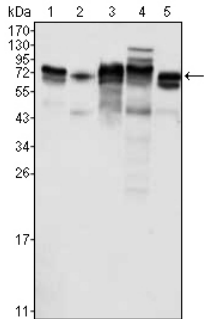
Overview

Product Name	Anti-Protein LYRIC MTDH Monoclonal Antibody
Reactive Species	Human
Description	Boster Bio Anti-Protein LYRIC MTDH Monoclonal Antibody catalog # M04060-1. Tested in ELISA, Flow Cytometry, IHC, WB applications. This antibody reacts with Human.
Application	ELISA, Flow Cytometry, IF, IHC, WB
Clonality	Monoclonal 2F11C3
Formulation	Ascitic fluid containing 0.03% sodium azide.
Storage Instructions	Store at -20°C for one year. For short term storage and frequent use, store at 4°C for up to one month. Avoid repeated freeze-thaw cycles.
Host	Mouse
Uniprot ID	Q86UE4

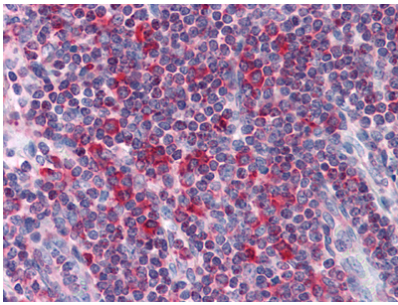
Technical Details

Immunogen	Purified recombinant fragment of human MTDH expressed in E. Coli.
Cross Reactivity	No cross reactivity with other proteins.
Isotype	IgG
Form	Liquid
Concentration	1 mg/ml
Purification	Affinity purification
Suggested Dilutions	WB 1:500-1:2000 IHC 1:200-1:1000 FC 1:200-1:400 ELISA 1:10000 IF 1:50-200

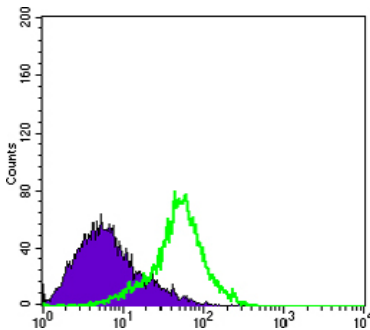
Anti-Protein LYRIC MTDH Monoclonal Antibody (M04060-1) Images



Western blotting validation for Anti-Protein LYRIC MTDH Monoclonal Antibody M04060-1 Western Blot (WB) analysis using MTDH Monoclonal Antibody against K562 (1)



Immunohistochemistry validation of MTDH using Anti-Protein LYRIC MTDH Monoclonal Antibody (M04060-1). Immunohistochemistry (IHC) analysis of paraffin-embedded Human Liver Tissues with AEC staining using MTDH Monoclonal Antibody. For more protocol information of IHC



Flow Cytometry validation of MTDH using Anti-Protein LYRIC MTDH Monoclonal Antibody (M04060-1). Flow cytometric (FCM) analysis of HeLa cells using MTDH Monoclonal Antibody (green) and negative control (purple).

Submit a product review to [Biocompare.com](https://www.biocompare.com)

Submit a review of this product to [Biocompare.com](https://www.biocompare.com) to receive a \$20 Amazon.com giftcard! Your reviews help your fellow scientists make the right decisions. Thank you for your contribution.



Anti-Protein LYRIC MTDH Monoclonal Antibody

For Research Use Only. Not for use in diagnostic procedures.