

Anti-CD10 MME Rabbit Monoclonal Antibody, Clone#RM337

Catalog Number: M04065-2

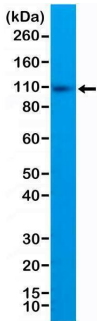
Overview

Product Name	Anti-CD10 MME Rabbit Monoclonal Antibody, Clone#RM337
Reactive Species	Human
Description	Boster Bio Anti-CD10 MME Rabbit Monoclonal Antibody, Clone#RM337 (Catalog # M04065-2). Tested in IHC, WB applications. This antibody reacts with Human.
Application	IHC, WB
Clonality	Monoclonal RM337
Formulation	50% Glycerol/PBS with 1% stabilizing protein and 0.09% sodium azide This antibody is supplied in a stabilized formulation. Compatibility with conjugation reactions depends on the chemistry of the conjugation method used. For conjugation methods that are not compatible with the stabilizing components present in this formulation, a carrier-free antibody format is required.
Storage Instructions	Store at -20°C for one year. Avoid repeated freeze-thaw cycles.
Host	Rabbit
Uniprot ID	P08473

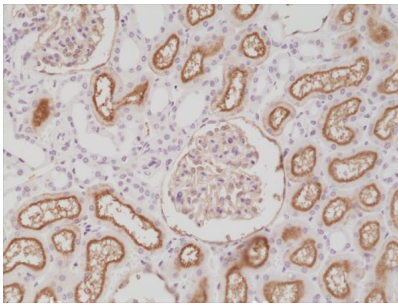
Technical Details

Immunogen	A peptide corresponding to the N-terminus of human CD10.
Cross Reactivity	This antibody reacts to the cytoplasmic domain of human CD10.
Isotype	Rabbit IgG
Form	Liquid
Concentration	0.5-1mg/ml, actual concentration vary by lot. Use suggested dilution ratio to decide dilution procedure.
Purification	Protein A affinity purified from an animal origin-free culture supernatant
Suggested Dilutions	Immunohistochemistry (IHC): 1:200-1:500 dilution WB: 1:1000-1:2000 dilution.

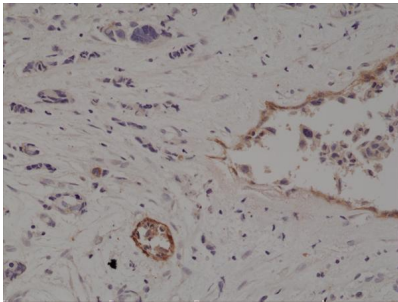
Anti-CD10 MME Rabbit Monoclonal Antibody, Clone#RM337 (M04065-2) Images



Western Blotting result Western Blot of Raji cell lysate using anti-CD10 rabbit monoclonal antibody (Clone RM337) at a 1:1000 dilution.



IHC result Immunohistochemical staining of formalin fixed and paraffin embedded human Kidney tissue section using anti-CD10 rabbit monoclonal antibody (Clone RM337) at a 1:200 dilution.



IHC result Immunohistochemical staining of formalin fixed and paraffin embedded human breast cancer tissue section using anti-CD10 rabbit monoclonal antibody (Clone RM337) at a 1:200 dilution.

1 Publications Citing This Product

1. PubMed ID: 33136001, Zhang C, Chen Y, Sun S, Zhang Y, Wang L, Luo Z, Liu M, Dong L, Dong N, Wu Q. A conserved LDL-receptor motif regulates corin and CD320 membrane targeting in polarized renal epithelial cells. *Elife*. 2020 Nov 2;9:e56059. doi:10.7554/eLife.56059. PMID:33136001; PMCID:PMC

Visit bosterbio.com/anti-cd10-rabbit-monoclonal-antibody-clone-rm337-m04065-2-boster.html to see all 1 publications.

Submit a product review to Biocompare.com

Submit a review of this product to Biocompare.com to receive a \$20 Amazon.com giftcard! Your reviews help your fellow scientists make the right decisions. Thank you for your contribution.



Anti-CD10 MME Rabbit Monoclonal Antibody, Clone#RM337

For Research Use Only. Not for use in diagnostic procedures.