

Anti-CD10 (MME) Mouse Monoclonal Antibody [Clone ID: OTI3D11]

Catalog Number: M04065-3

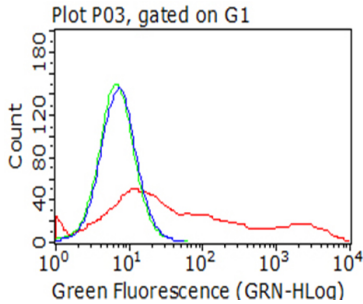
Overview

Product Name	Anti-CD10 (MME) Mouse Monoclonal Antibody [Clone ID: OTI3D11]
Reactive Species	Human, Mouse, Rat
Description	Boster Bio MME (CD10) mouse monoclonal antibody, clone OTI3D11 (formerly 3D11). Catalog# M04065-3. Tested in FC, WB. This antibody reacts with Human, Mouse, Rat.
Conjugate	Unconjugated
Application	Flow Cytometry, WB
Clonality	Monoclonal OTI3D11
Formulation	PBS (pH 7.3) containing 1% stabilizing protein, 50% glycerol and 0.02% sodium azide. This antibody is supplied in a stabilized formulation. Compatibility with conjugation reactions depends on the chemistry of the conjugation method used. For conjugation methods that are not compatible with the stabilizing components present in this formulation, a carrier-free antibody format is required.
Storage Instructions	Store at -20°C for one year. For short term storage and frequent use, store at 4°C for up to one month. Avoid repeated freeze-thaw cycles.
Host	Mouse
Uniprot ID	P08473

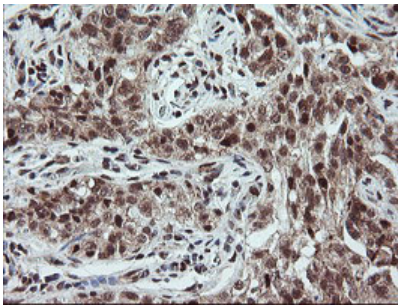
Technical Details

Immunogen	Full length human recombinant protein of human MME (NP_009218) produced in HEK293T cell.
Isotype	IgG2a
Concentration	1 mg/ml
Purification	Purified from mouse ascites fluids or tissue culture supernatant by affinity chromatography (protein A/G)
Suggested Dilutions	WB: 1:2000 IHC: 1:150 Flow cytometry: 1:100

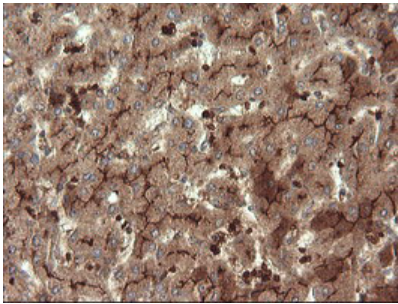
Anti-CD10 (MME) Mouse Monoclonal Antibody [Clone ID: OTI3D11] (M04065-3) Images



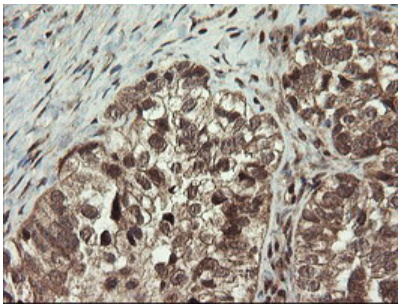
Flow cytometric analysis of living 293T cells transfected with MME overexpression plasmid



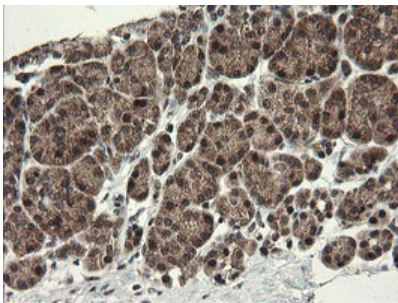
Immunohistochemical staining of paraffin-embedded Carcinoma of Human kidney tissue using anti-MME mouse monoclonal antibody. (Heat-induced epitope retrieval by 10mM citric buffer)



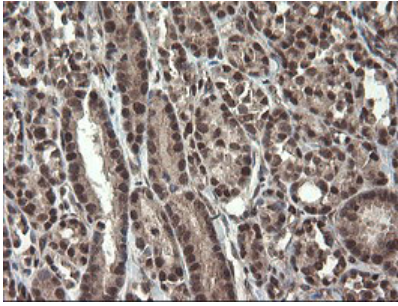
Immunohistochemical staining of paraffin-embedded Human liver tissue within the normal limits using anti-MME mouse monoclonal antibody. (Heat-induced epitope retrieval by 10mM citric buffer)



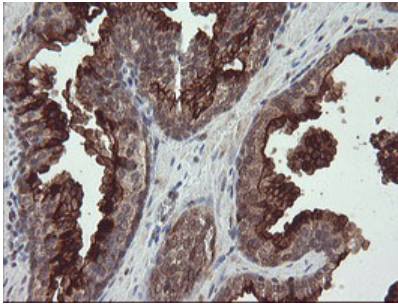
Immunohistochemical staining of paraffin-embedded Adenocarcinoma of Human ovary tissue using anti-MME mouse monoclonal antibody. (Heat-induced epitope retrieval by 10mM citric buffer)



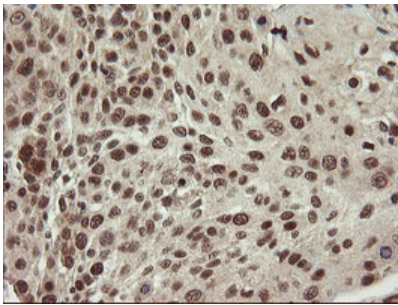
Immunohistochemical staining of paraffin-embedded Human pancreas tissue within the normal limits using anti-MME mouse monoclonal antibody. (Heat-induced epitope retrieval by 10mM citric buffer)



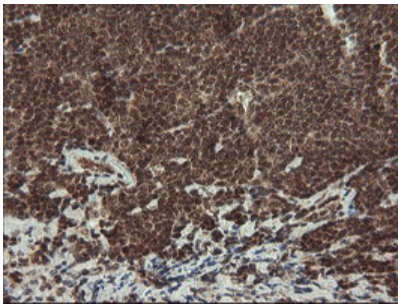
Immunohistochemical staining of paraffin-embedded Carcinoma of Human thyroid tissue using anti-MME mouse monoclonal antibody. (Heat-induced epitope retrieval by 10mM citric buffer)



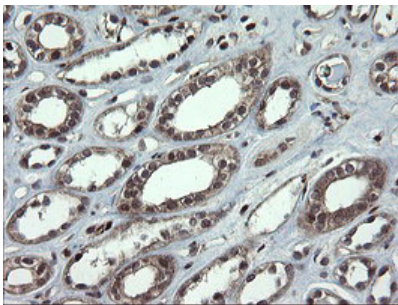
Immunohistochemical staining of paraffin-embedded Human prostate tissue within the normal limits using anti-MME mouse monoclonal antibody. (Heat-induced epitope retrieval by 10mM citric buffer)



Immunohistochemical staining of paraffin-embedded Carcinoma of Human bladder tissue using anti-MME mouse monoclonal antibody. (Heat-induced epitope retrieval by 10mM citric buffer)

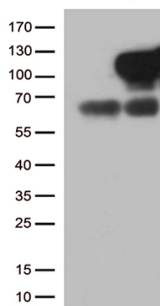


Immunohistochemical staining of paraffin-embedded Human lymphoma tissue using anti-MME mouse monoclonal antibody. (Heat-induced epitope retrieval by 10mM citric buffer)

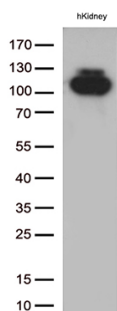


Immunohistochemical staining of paraffin-embedded Human Kidney tissue within the normal limits using anti-MME mouse monoclonal antibody. (Heat-induced epitope retrieval by 10mM citric buffer)

HEK293T cells were transfected with the pCMV6-ENTRY control (Left lane) or pCMV6-ENTRY MME (Right lane) cDNA



for 48 hrs and lysed. Equivalent amounts of cell lysates (5 ug per lane) were separated by SDS-PAGE and immunoblotted with anti-MME (1:500).



Western blot analysis of extracts (35ug) from 1 tissue lysate by using anti-MME monoclonal antibody (1:500).

1 Publications Citing This Product

1. PubMed ID: 33136001, Zhang C, Chen Y, Sun S, Zhang Y, Wang L, Luo Z, Liu M, Dong L, Dong N, Wu Q. A conserved LDL-receptor motif regulates corin and CD320 membrane targeting in polarized renal epithelial cells. *Elife*. 2020 Nov 2;9:e56059. doi:10.7554/eLife.56059. PMID:33136001; PMCID: PMC

Visit bosterbio.com/anti-cd10-mme-mouse-monoclonal-antibody-clone-id-oti3d11-m04065-3-boster.html to see all 1 publications.

Submit a product review to Biocompare.com

Submit a review of this product to Biocompare.com to receive a \$20 Amazon.com giftcard! Your reviews help your fellow scientists make the right decisions. Thank you for your contribution.



Anti-CD10 (MME) Mouse Monoclonal Antibody [Clone ID: OTI3D11]

For Research Use Only. Not for use in diagnostic procedures.