

Anti-SERPINB3 Mouse Monoclonal Antibody [Clone ID: OTI3C2]

Catalog Number: M04067

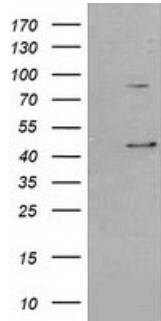
Overview

Product Name	Anti-SERPINB3 Mouse Monoclonal Antibody [Clone ID: OTI3C2]
Reactive Species	Dog, Human, Monkey, Rat
Description	Boster Bio SERPINB3 mouse monoclonal antibody, clone OTI3C2 (formerly 3C2). Catalog# M04067. Tested in IHC, WB. This antibody reacts with Human, Monkey, Rat, Dog.
Application	IHC, WB
Clonality	Monoclonal OTI3C2
Formulation	PBS (pH 7.3) containing 1% stabilizing protein, 50% glycerol and 0.02% sodium azide. This antibody is supplied in a stabilized formulation. Compatibility with conjugation reactions depends on the chemistry of the conjugation method used. For conjugation methods that are not compatible with the stabilizing components present in this formulation, a carrier-free antibody format is required.
Storage Instructions	Store at -20°C as received.
Host	Mouse
Uniprot ID	P29508

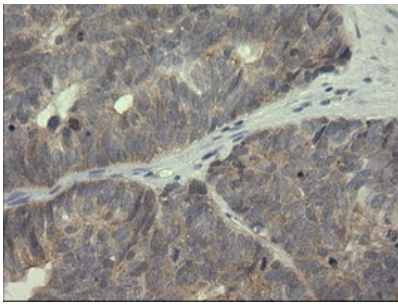
Technical Details

Immunogen	Full length human recombinant protein of human SERPINB3 (NP_008850) produced in HEK293T cell.
Isotype	IgG1
Concentration	0.64 mg/ml
Purification	Purified from mouse ascites fluids or tissue culture supernatant by affinity chromatography (protein A/G)
Suggested Dilutions	WB: 1:2000 IHC: 1:150

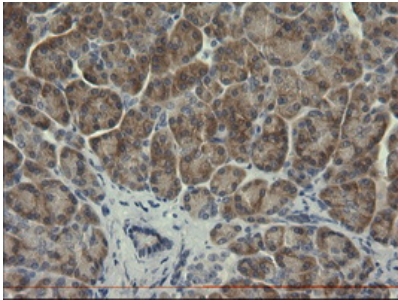
Anti-SERPINB3 Mouse Monoclonal Antibody [Clone ID: OTI3C2] (M04067) Images



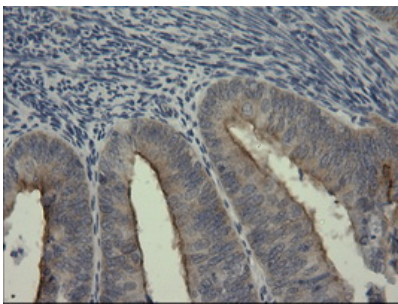
HEK293T cells were transfected with the pCMV6-ENTRY control (Left lane) or pCMV6-ENTRY SERPINB3 (Right lane) cDNA for 48 hrs and lysed. Equivalent amounts of cell lysates (5 ug per lane) were separated by SDS-PAGE and immunoblotted with anti-SERPINB3.



Immunohistochemical staining of paraffin-embedded Adenocarcinoma of Human ovary tissue using anti-SERPINB3 mouse monoclonal antibody. (Heat-induced epitope retrieval by 10mM citric buffer)



Immunohistochemical staining of paraffin-embedded Human pancreas tissue within the normal limits using anti-SERPINB3 mouse monoclonal antibody. (Heat-induced epitope retrieval by 10mM citric buffer)



Immunohistochemical staining of paraffin-embedded Adenocarcinoma of Human endometrium tissue using anti-SERPINB3 mouse monoclonal antibody. (Heat-induced epitope retrieval by 10mM citric buffer)

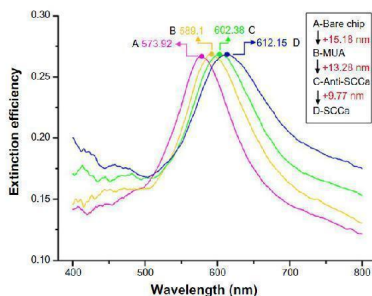


Figure from citation: LSPR spectra for processing steps of immobilization and detection of 100 pM SCCa. (A) Bare silver nanochip

Submit a product review to Biocompare.com

Submit a review of this product to Biocompare.com to receive a \$20 Amazon.com giftcard! Your reviews help your fellow scientists make the right decisions. Thank you for your contribution.



Anti-SERPINB3 Mouse Monoclonal Antibody [Clone ID: OT13C2]

For Research Use Only. Not for use in diagnostic procedures.