

Anti-SLAMF7 Mouse Monoclonal Antibody [Clone ID: OTI3B3]

Catalog Number: M04083

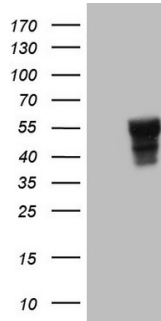
Overview

Product Name	Anti-SLAMF7 Mouse Monoclonal Antibody [Clone ID: OTI3B3]
Reactive Species	Human
Description	Boster Bio SLAMF7 mouse monoclonal antibody, clone OTI3B3 (formerly 3B3). Catalog# M04083. Tested in FC, IHC, WB. This antibody reacts with Human.
Application	Flow Cytometry, IHC, WB
Clonality	Monoclonal OTI3B3
Formulation	PBS (pH 7.3) containing 1% stabilizing protein, 50% glycerol and 0.02% sodium azide. This antibody is supplied in a stabilized formulation. Compatibility with conjugation reactions depends on the chemistry of the conjugation method used. For conjugation methods that are not compatible with the stabilizing components present in this formulation, a carrier-free antibody format is required.
Storage Instructions	Store at -20°C as received.
Host	Mouse
Uniprot ID	Q9NQ25

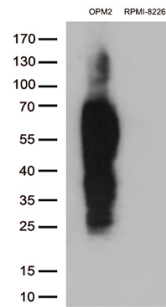
Technical Details

Immunogen	Full length human recombinant protein of human SLAMF7 (NP_067004) produced in HEK293T cell.
Isotype	IgG2b
Concentration	1 mg/ml
Purification	Purified from mouse ascites fluids or tissue culture supernatant by affinity chromatography (protein A/G)
Suggested Dilutions	WB 1:2000 IHC 1:150

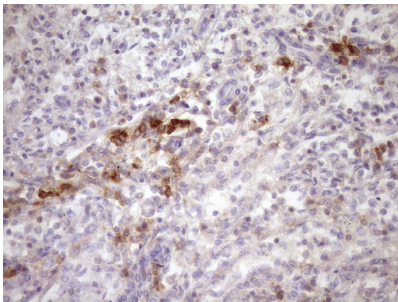
Anti-SLAMF7 Mouse Monoclonal Antibody [Clone ID: OTI3B3] (M04083) Images



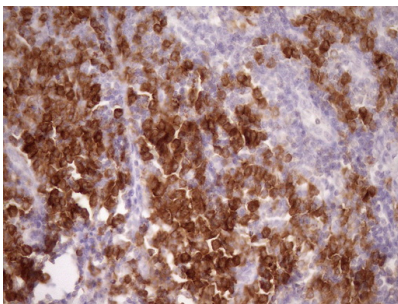
HEK293T cells were transfected with the pCMV6-ENTRY control (Left lane) or pCMV6-ENTRY SLAMF7 (Right lane) cDNA for 48 hrs and lysed. Equivalent amounts of cell lysates (5 ug per lane) were separated by SDS-PAGE and immunoblotted with anti-SLAMF7 (1:2000).



Western blot analysis of extracts (35ug) from 2 cell lines lysates by using anti-SLAMF7 monoclonal antibody (1:500).

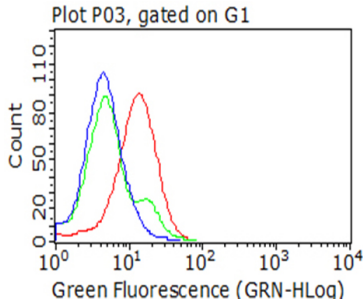
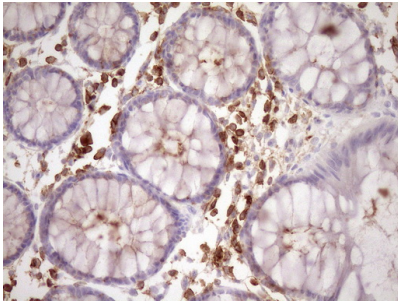


Immunohistochemical staining of paraffin-embedded Human thyroid tissue within the normal limits using anti-SLAMF7 mouse monoclonal antibody. (Heat-induced epitope retrieval by Tris-EDTA)

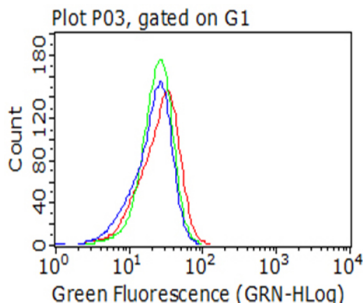


Immunohistochemical staining of paraffin-embedded Human tonsil within the normal limits using anti-SLAMF7 mouse monoclonal antibody. (Heat-induced epitope retrieval by Tris-EDTA)

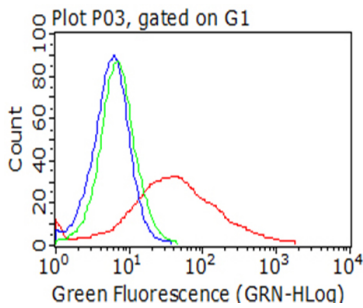
Immunohistochemical staining of paraffin-embedded Human colon tissue within the normal limits using anti-SLAMF7 mouse monoclonal antibody. (Heat-induced epitope retrieval by Tris-EDTA)



Flow cytometric analysis of living OPM2 cells



Flow cytometric analysis of living RPMI-8226 cells



Flow cytometric analysis of living 293T cells transfected with SLAMF7 overexpression plasmid

Submit a product review to Biocompare.com

Submit a review of this product to Biocompare.com to receive a \$20 Amazon.com giftcard! Your reviews help your fellow scientists make the right decisions. Thank you for your contribution.



Anti-SLAMF7 Mouse Monoclonal Antibody [Clone ID: OT13B3]

For Research Use Only. Not for use in diagnostic procedures.