

Anti-SPG7 Mouse Monoclonal Antibody [Clone ID: OTI1C1]

Catalog Number: M04104-1

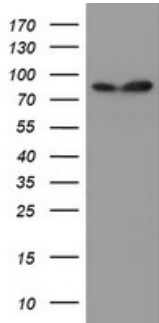
Overview

Product Name	Anti-SPG7 Mouse Monoclonal Antibody [Clone ID: OTI1C1]
Reactive Species	Dog, Human, Monkey, Mouse, Rat
Description	Boster Bio SPG7 mouse monoclonal antibody, clone OTI1C1 (formerly 1C1). Catalog# M04104-1. Tested in FC, IF, WB. This antibody reacts with Human, Monkey, Mouse, Rat, Dog.
Application	Flow Cytometry, IF, WB
Clonality	Monoclonal OTI1C1
Formulation	PBS (pH 7.3) containing 1% stabilizing protein, 50% glycerol and 0.02% sodium azide. This antibody is supplied in a stabilized formulation. Compatibility with conjugation reactions depends on the chemistry of the conjugation method used. For conjugation methods that are not compatible with the stabilizing components present in this formulation, a carrier-free antibody format is required.
Storage Instructions	Store at -20°C as received.
Host	Mouse
Uniprot ID	Q9UQ90

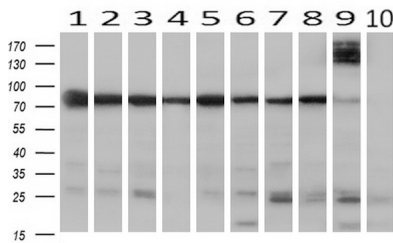
Technical Details

Immunogen	Human recombinant protein fragment corresponding to amino acids 300-573 of human SPG7 (NP_003110) produced in E.coli.
Isotype	IgG1
Concentration	1 mg/ml
Purification	Purified from mouse ascites fluids or tissue culture supernatant by affinity chromatography (protein A/G)
Suggested Dilutions	WB 1:500~2000 IF 1:100 Flow Cytometry 1:100

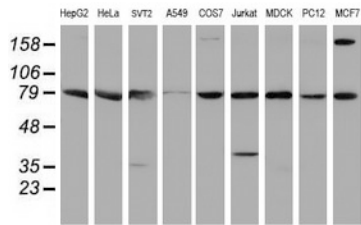
Anti-SPG7 Mouse Monoclonal Antibody [Clone ID: OTI1C1] (M04104-1) Images



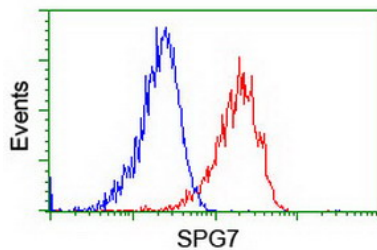
HEK293T cells were transfected with the pCMV6-ENTRY control (Left lane) or pCMV6-ENTRY SPG7 (Right lane) cDNA for 48 hrs and lysed. Equivalent amounts of cell lysates (5 ug per lane) were separated by SDS-PAGE and immunoblotted with anti-SPG7.



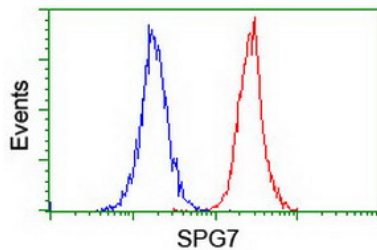
Western blot analysis of extracts (10ug) from 10 Human tissue by using anti-SPG7 monoclonal antibody at 1:200 (1: Testis; 2: Omentum; 3: Uterus; 4: Breast; 5: Brain; 6: Liver; 7: Ovary; 8: Thyroid gland; 9: colon;10: spleen).



Western blot analysis of extracts (35ug) from 9 different cell lines by using anti-SPG7 monoclonal antibody.

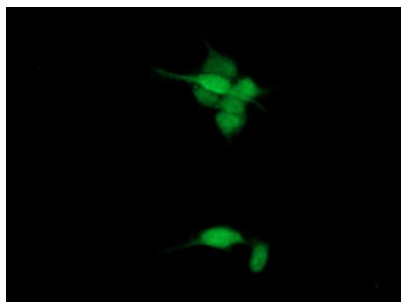
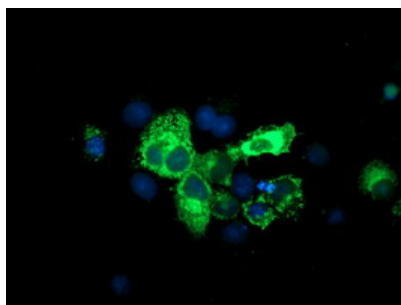


Flow cytometric Analysis of HeLa cells



Flow cytometric Analysis of Jurkat cells

Anti-SPG7 mouse monoclonal antibody (M04104-1) immunofluorescent staining of COS7 cells transiently transfected by pCMV6-ENTRY SPG7.



Immunofluorescent staining of HeLa cells using anti-SPG7 mouse monoclonal antibody (M04104-1).

Submit a product review to [Biocompare.com](https://www.biocompare.com)

Submit a review of this product to [Biocompare.com](https://www.biocompare.com) to receive a \$20 Amazon.com giftcard! Your reviews help your fellow scientists make the right decisions. Thank you for your contribution.



Anti-SPG7 Mouse Monoclonal Antibody [Clone ID: OT11C1]

For Research Use Only. Not for use in diagnostic procedures.