

Anti-STOML2 Mouse Monoclonal Antibody [Clone ID: OTI1F5]

Catalog Number: M04108

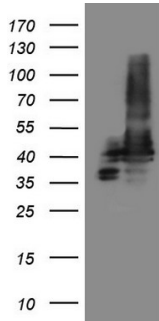
Overview

Product Name	Anti-STOML2 Mouse Monoclonal Antibody [Clone ID: OTI1F5]
Reactive Species	Human, Mouse, Rat
Description	Boster Bio STOML2 mouse monoclonal antibody, clone OTI1F5 (formerly 1F5). Catalog# M04108. Tested in IHC, WB. This antibody reacts with Human, Mouse, Rat.
Application	IHC, WB
Clonality	Monoclonal OTI1F5
Formulation	PBS (pH 7.3) containing 1% stabilizing protein, 50% glycerol and 0.02% sodium azide. This antibody is supplied in a stabilized formulation. Compatibility with conjugation reactions depends on the chemistry of the conjugation method used. For conjugation methods that are not compatible with the stabilizing components present in this formulation, a carrier-free antibody format is required.
Storage Instructions	Store at -20°C as received.
Host	Mouse
Uniprot ID	Q9UJZ1

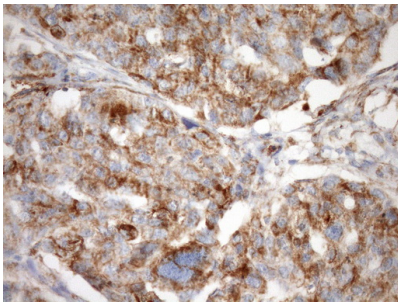
Technical Details

Immunogen	Full length human recombinant protein of human STOML2 (NP_038470) produced in E.coli.
Isotype	IgG1
Concentration	1 mg/ml
Purification	Purified from mouse ascites fluids or tissue culture supernatant by affinity chromatography (protein A/G)
Suggested Dilutions	WB: 1:2000 IHC: 1:150

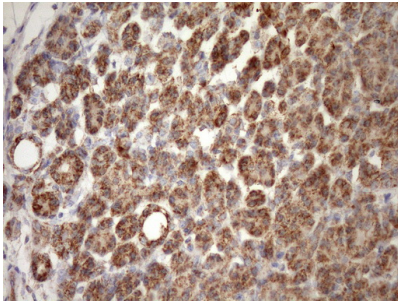
Anti-STOML2 Mouse Monoclonal Antibody [Clone ID: OTI1F5] (M04108) Images



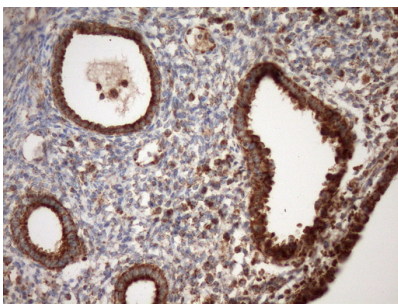
HEK293T cells were transfected with the pCMV6-ENTRY control (Left lane) or pCMV6-ENTRY STOML2 (Right lane) cDNA for 48 hrs and lysed. Equivalent amounts of cell lysates (5 ug per lane) were separated by SDS-PAGE and immunoblotted with anti-STOML2 (1:2000).



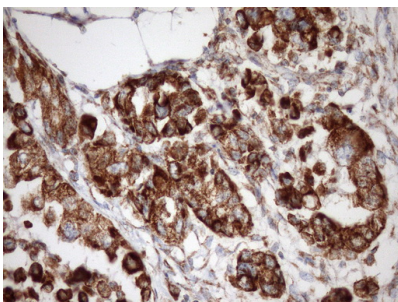
Immunohistochemical staining of paraffin-embedded Adenocarcinoma of Human ovary tissue using anti-STOML2 mouse monoclonal antibody. (Heat-induced epitope retrieval by Tris-EDTA)



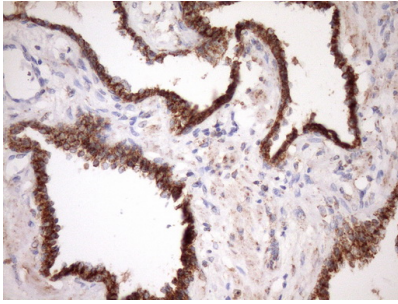
Immunohistochemical staining of paraffin-embedded Human pancreas tissue within the normal limits using anti-STOML2 mouse monoclonal antibody. (Heat-induced epitope retrieval by Tris-EDTA)



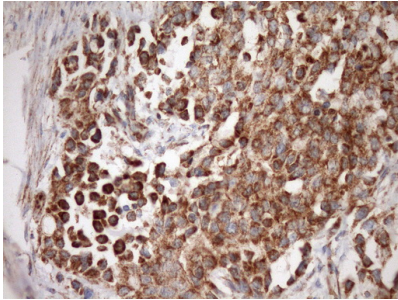
Immunohistochemical staining of paraffin-embedded Carcinoma of Human pancreas tissue using anti-STOML2 mouse monoclonal antibody. (Heat-induced epitope retrieval by Tris-EDTA)



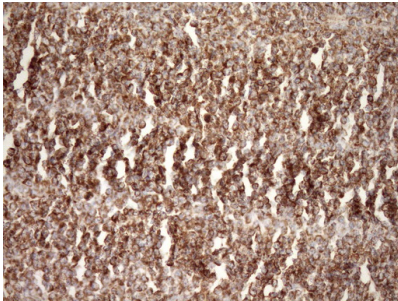
Immunohistochemical staining of paraffin-embedded Adenocarcinoma of Human endometrium tissue using anti-STOML2 mouse monoclonal antibody. (Heat-induced epitope retrieval by Tris-EDTA)



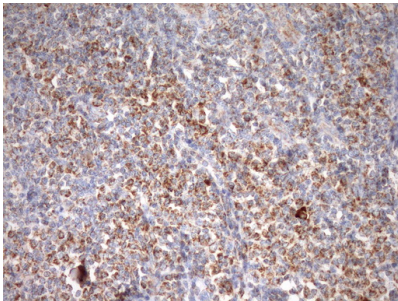
Immunohistochemical staining of paraffin-embedded Carcinoma of Human prostate tissue using anti-STOML2 mouse monoclonal antibody. (Heat-induced epitope retrieval by Tris-EDTA)



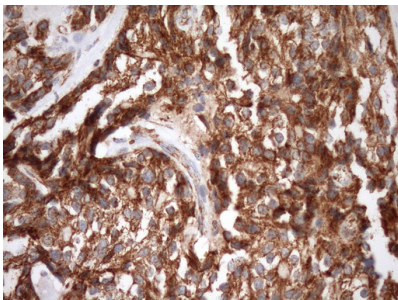
Immunohistochemical staining of paraffin-embedded Human bladder tissue within the normal limits using anti-STOML2 mouse monoclonal antibody. (Heat-induced epitope retrieval by Tris-EDTA)



Immunohistochemical staining of paraffin-embedded Human lymphoma tissue using anti-STOML2 mouse monoclonal antibody. (Heat-induced epitope retrieval by Tris-EDTA)

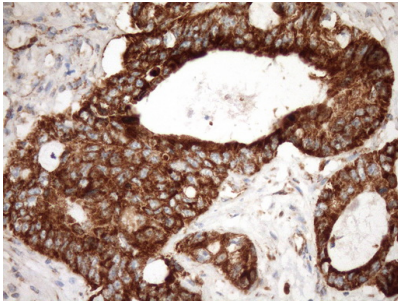


Immunohistochemical staining of paraffin-embedded Human tonsil within the normal limits using anti-STOML2 mouse monoclonal antibody. (Heat-induced epitope retrieval by Tris-EDTA)

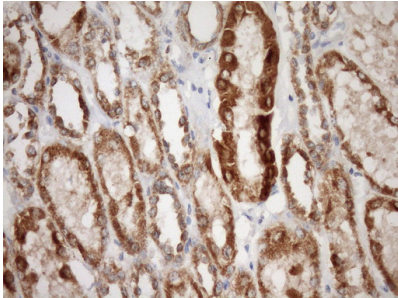


Immunohistochemical staining of paraffin-embedded Adenocarcinoma of Human breast tissue using anti-STOML2 mouse monoclonal antibody. (Heat-induced epitope retrieval by Tris-EDTA)

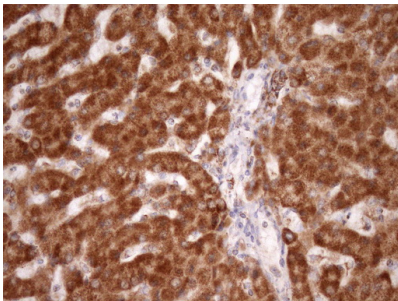
Immunohistochemical staining of paraffin-embedded Adenocarcinoma of Human colon tissue using anti-STOML2



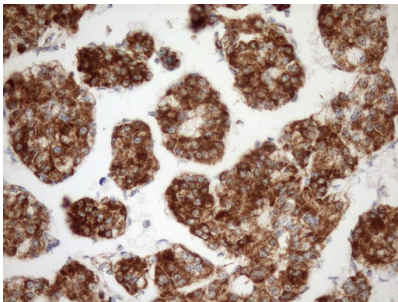
mouse monoclonal antibody. (Heat-induced epitope retrieval by Tris-EDTA)



Immunohistochemical staining of paraffin-embedded Human Kidney tissue within the normal limits using anti-STOML2 mouse monoclonal antibody. (Heat-induced epitope retrieval by Tris-EDTA)



Immunohistochemical staining of paraffin-embedded Human liver tissue within the normal limits using anti-STOML2 mouse monoclonal antibody. (Heat-induced epitope retrieval by Tris-EDTA)



Immunohistochemical staining of paraffin-embedded Carcinoma of Human liver tissue using anti-STOML2 mouse monoclonal antibody. (Heat-induced epitope retrieval by Tris-EDTA)

Submit a product review to [Biocompare.com](https://www.biocompare.com)

Submit a review of this product to [Biocompare.com](https://www.biocompare.com) to receive a \$20 Amazon.com giftcard! Your reviews help your fellow scientists make the right decisions. Thank you for your contribution.



Anti-STOML2 Mouse Monoclonal Antibody [Clone ID: OTI1F5]

For Research Use Only. Not for use in diagnostic procedures.