

## Anti-TOM1 Antibody (Monoclonal, 32T73)

Catalog Number: M04143

### About TOM1

Target of Myb protein 1 is a protein that in humans is encoded by the TOM1 gene. This gene was identified as a target of the v-myb oncogene. The encoded protein shares its N-terminal domain in common with proteins associated with vesicular trafficking at the endosome. It is recruited to the endosomes by its interaction with endofin. Several alternatively spliced transcript variants encoding different isoforms have been found for this gene.

### Overview

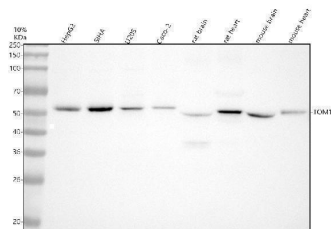
Product Name	Anti-TOM1 Antibody (Monoclonal, 32T73)
Reactive Species	Human, Mouse, Rat
Description	Boster Bio Anti-TOM1 Antibody (Monoclonal, 32T73) catalog # M04143. Tested in WB, IHC, IF applications. This antibody reacts with Human, Mouse, Rat.
Application	IF, IHC, WB
Clonality	Monoclonal 32T73
Formulation	Rabbit IgG in stabilizing components, phosphate buffered saline, pH 7.4, 150mM NaCl, 0.02% sodium azide and 50% glycerol. This antibody is supplied in a stabilized formulation. Compatibility with conjugation reactions depends on the chemistry of the conjugation method used. For conjugation methods that are not compatible with the stabilizing components present in this formulation, a carrier-free antibody format is required.
Storage Instructions	Store at -20°C for one year. For short term storage and frequent use, store at 4°C for up to one month. Avoid repeated freeze-thaw cycles.
Host	Rabbit
Uniprot ID	O60784

### Technical Details

Immunogen	Recombinant protein within human TOM1 aa 302-448.
Form	Liquid
Concentration	500 ug/ml
Purification	Protein A affinity purified.
Suggested Dilutions	Western blot, 1:500-2000 Immunohistochemistry, 1:50-200 Immunofluorescence, 1:50-200



## Anti-TOM1 Antibody (Monoclonal, 32T73) (M04143) Images



Western blot analysis of TOM1 using anti-TOM1 antibody (M04143). Electrophoresis was performed on a 10% SDS-PAGE gel at 80V (Stacking gel) / 120V (Resolving gel) for 2 hours. The sample well of each lane was loaded with 30 ug of sample under reducing conditions. Lane 1: human HepG2 whole cell lysates, Lane 2: human SIHA whole cell lysates, Lane 3: human U2OS whole cell lysates, Lane 4: human Caco-2 whole cell lysates, Lane 5: rat brain tissue lysates, Lane 6: rat heart tissue lysates, Lane 7: mouse brain tissue lysates, Lane 8: mouse heart tissue lysates. After electrophoresis, proteins were transferred to a nitrocellulose membrane at 150 mA for 50-90 minutes. Blocked the membrane with 5% non-fat milk/TBS for 1.5 hour at RT. The membrane was incubated with rabbit anti-TOM1 antigen affinity purified monoclonal antibody (M04143) at 1:500 overnight at 4°C, then washed with TBS-0.1%Tween 3 times with 5 minutes each and probed with a goat anti-rabbit IgG-HRP secondary antibody at a dilution of 1:5000 for 1.5 hour at RT. The signal is developed using an ECL Plus Western Blotting Substrate (Catalog # AR1196-200) with Tanon 5200 system. A specific band was detected for TOM1 at approximately 54 kDa. The expected band size for TOM1 is at 54 kDa.

### Submit a product review to [Biocompare.com](https://www.biocompare.com)

Submit a review of this product to [Biocompare.com](https://www.biocompare.com) to receive a \$20 Amazon.com giftcard! Your reviews help your fellow scientists make the right decisions. Thank you for your contribution.



Anti-TOM1 Antibody (Monoclonal, 32T73)

For Research Use Only. Not for use in diagnostic procedures.