

## Anti-Ribonuclease Inhibitor (RNH1) Mouse Monoclonal Antibody [Clone ID: OTI3F11]

Catalog Number: M04147-1

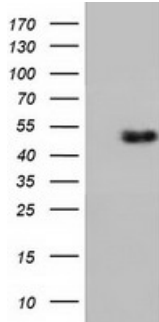
### Overview

Product Name	Anti-Ribonuclease Inhibitor (RNH1) Mouse Monoclonal Antibody [Clone ID: OTI3F11]
Reactive Species	Dog, Human, Monkey, Rat
Description	Boster Bio RNH1 (Ribonuclease Inhibitor) mouse monoclonal antibody, clone OTI3F11 (formerly 3F11). Catalog# M04147-1. Tested in FC, IHC, WB. This antibody reacts with Human, Monkey, Rat, Dog.
Application	Flow Cytometry, IHC, WB
Clonality	Monoclonal OTI3F11
Formulation	PBS (PH 7.3) containing 1% BSA, 50% glycerol and 0.02% sodium azide.
Storage Instructions	Store at -20°C as received.
Host	Mouse
Uniprot ID	P13489

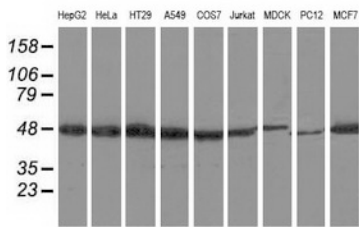
### Technical Details

Immunogen	Full length human recombinant protein of human RNH1 (NP_002930) produced in HEK293T cell.
Isotype	IgG1
Concentration	0.94 mg/ml
Purification	Purified from mouse ascites fluids or tissue culture supernatant by affinity chromatography (protein A/G)
Suggested Dilutions	Dilute the sample so that the expected range of concentrations fall within the detection range of this kit. If the expected range of concentration is unknown, a pilot test should be conducted to decide the optimal dilution ratio for your samples. Some PubMed article(s) citing the expression level of this target are as follows:

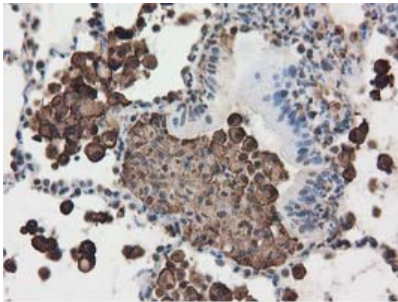
## Anti-Ribonuclease Inhibitor (RNH1) Mouse Monoclonal Antibody [Clone ID: OTI3F11] (M04147-1) Images



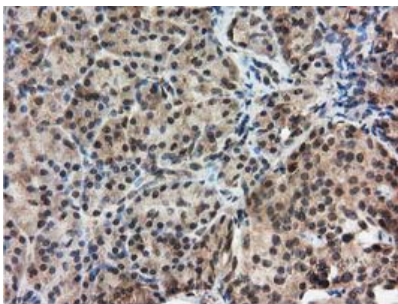
HEK293T cells were transfected with the pCMV6-ENTRY control (Left lane) or pCMV6-ENTRY RNH1 (Right lane) cDNA for 48 hrs and lysed. Equivalent amounts of cell lysates (5 ug per lane) were separated by SDS-PAGE and immunoblotted with anti-RNH1.



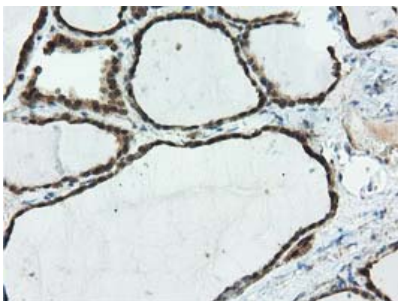
Western blot analysis of extracts (35ug) from 9 different cell lines by using anti-RNH1 monoclonal antibody.



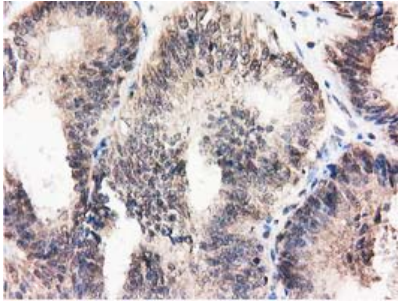
Immunohistochemical staining of paraffin-embedded Carcinoma of Human lung tissue using anti-RNH1 mouse monoclonal antibody. (M04147-1)



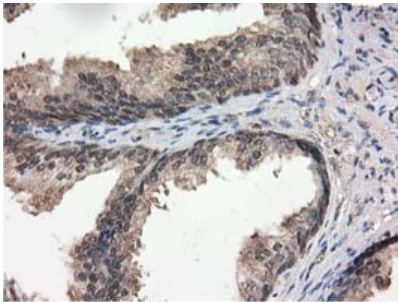
Immunohistochemical staining of paraffin-embedded Human pancreas tissue within the normal limits using anti-RNH1 mouse monoclonal antibody. (M04147-1)



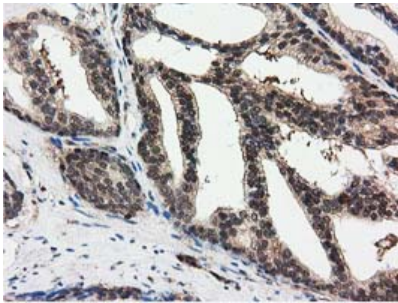
Immunohistochemical staining of paraffin-embedded Human thyroid tissue within the normal limits using anti-RNH1 mouse monoclonal antibody. (M04147-1)



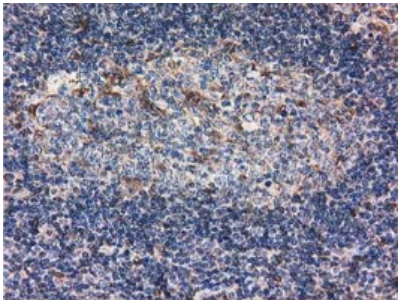
Immunohistochemical staining of paraffin-embedded Adenocarcinoma of Human endometrium tissue using anti-RNH1 mouse monoclonal antibody. (M04147-1)



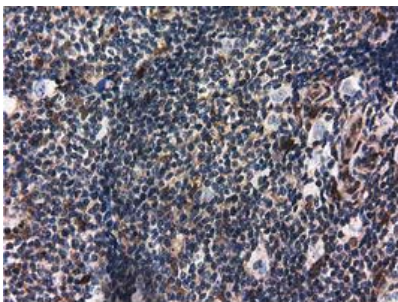
Immunohistochemical staining of paraffin-embedded Human prostate tissue within the normal limits using anti-RNH1 mouse monoclonal antibody. (M04147-1)



Immunohistochemical staining of paraffin-embedded Carcinoma of Human prostate tissue using anti-RNH1 mouse monoclonal antibody. (M04147-1)

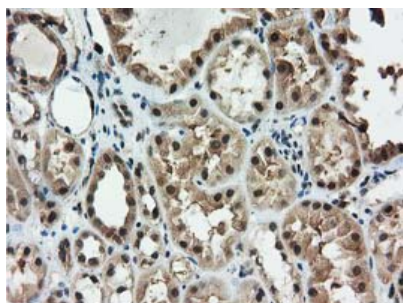


Immunohistochemical staining of paraffin-embedded Human lymph node tissue within the normal limits using anti-RNH1 mouse monoclonal antibody. (M04147-1)

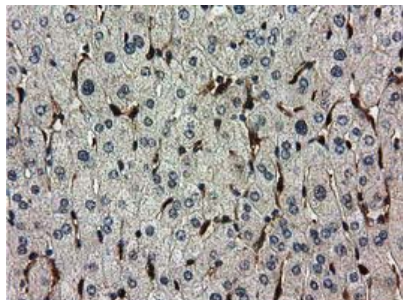


Immunohistochemical staining of paraffin-embedded Human lymphoma tissue using anti-RNH1 mouse monoclonal antibody. (M04147-1)

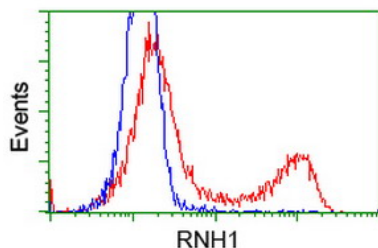
Immunohistochemical staining of paraffin-embedded Human Kidney tissue within the normal limits using anti-RNH1



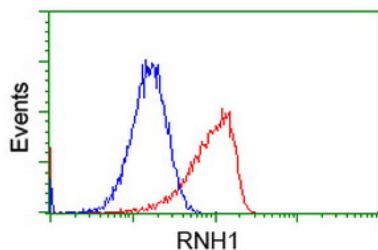
mouse monoclonal antibody. (M04147-1)



Immunohistochemical staining of paraffin-embedded Human liver tissue within the normal limits using anti-RNH1 mouse monoclonal antibody. (M04147-1)



HEK293T cells transfected with either RNH1 (Myc-DDK-tagged) overexpress plasmid (Red) or empty vector control plasmid (Blue) were immunostained by anti-RNH1 antibody (M04147-1)



Flow cytometric Analysis of HeLa cells

**Submit a product review to Biocompare.com**

Submit a review of this product to Biocompare.com to receive a \$20 Amazon.com giftcard! Your reviews help your fellow scientists make the right decisions. Thank you for your contribution.



Anti-Ribonuclease Inhibitor (RNH1) Mouse Monoclonal Antibody [Clone ID: OTI3F11]