

Anti-TSLP Receptor Antibody (Monoclonal, ABM28B6)

Catalog Number: M04167

About CRLF2

CD6 is a type I transmembrane glycoprotein that contains a 24-amino acid signal sequence, three extracellular scavenger receptor cysteine-rich (SRCR) domains, a membrane-spanning domain and a 44-amino acid cytoplasmic domain. The CD6 glycoprotein is tyrosine phosphorylated during TCR-mediated T cell activation. CD6 shows significant homology to CD5. CD6 is present on mature thymocytes, peripheral T cells and a subset of B cells. Antibodies to CD6 are used to deplete T cells from bone marrow transplants to prevent graft versus host disease.

Overview

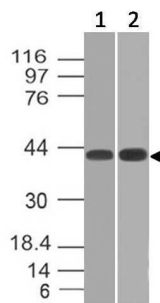
Product Name	Anti-TSLP Receptor Antibody (Monoclonal, ABM28B6)
Reactive Species	Human
Description	Boster Bio Anti-TSLP Receptor Antibody (Monoclonal, ABM28B6) (Catalog# M04167). Tested in FACS, WB application(s). This antibody reacts with Human.
Conjugate	Biotin
Application	WB, FACS
Clonality	Monoclonal ABM28B6
Formulation	100 µg in 200 µl PBS containing 0.05% stabilizing protein and 0.05% sodium azide This antibody is supplied in a stabilized formulation. Compatibility with conjugation reactions depends on the chemistry of the conjugation method used. For conjugation methods that are not compatible with the stabilizing components present in this formulation, a carrier-free antibody format is required.
Storage Instructions	Store the antibody at 4°C, stable for 6 months. For long-term storage, store at -20°C. Avoid repeated freeze and thaw cycles.
Host	Mouse
Uniprot ID	Q9HC73

Technical Details

Immunogen	A partial length recombinant TSLPR protein (amino acids 97-252)
Predicted Reactive Species	Pig, Rabbit
Cross Reactivity	Does not cross-react with primate, avian or amphibian GR.
Isotype	IgG2a Kappa
Form	Liquid

Concentration	0.5-1mg/ml, actual concentration vary by lot. Use suggested dilution ratio to decide dilution procedure.
Purification	Protein G Chromatography
Suggested Dilutions	Western blot: 2-4 µg/ml Flow cytometry: 0.5-1 µg/10 ⁶ Cells

Anti-TSLP Receptor Antibody (Monoclonal, ABM28B6) (M04167) Images



Western blot analysis of TSLP Receptor. Anti-TSLP Receptor antibody (Clone: ABM28B6) was tested at 2 μ

Submit a product review to Biocompare.com

Submit a review of this product to Biocompare.com to receive a \$20 Amazon.com giftcard! Your reviews help your fellow scientists make the right decisions. Thank you for your contribution.



Anti-TSLP Receptor Antibody (Monoclonal, ABM28B6)

For Research Use Only. Not for use in diagnostic procedures.