

Anti-FKBP51 (FKBP5) Mouse Monoclonal Antibody [Clone ID: OTI3E9]

Catalog Number: M04182-2

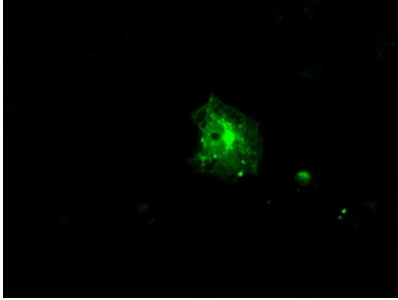
Overview

Product Name	Anti-FKBP51 (FKBP5) Mouse Monoclonal Antibody [Clone ID: OTI3E9]
Reactive Species	Human, Rat
Description	Boster Bio Anti-FKBP5 (FKBP51) mouse monoclonal antibody, clone OTI3E9 (formerly 3E9). Catalog# M04182-2. Tested in IF, IHC, WB. This antibody reacts with Human, Rat.
Conjugate	Unconjugated
Application	IF, IHC, WB
Clonality	Monoclonal OTI3E9
Formulation	PBS (pH 7.3) containing 1% stabilizing protein, 50% glycerol and 0.02% sodium azide. This antibody is supplied in a stabilized formulation. Compatibility with conjugation reactions depends on the chemistry of the conjugation method used. For conjugation methods that are not compatible with the stabilizing components present in this formulation, a carrier-free antibody format is required.
Storage Instructions	Store at -20°C for one year. For short term storage and frequent use, store at 4°C for up to one month. Avoid repeated freeze-thaw cycles.
Host	Mouse
Uniprot ID	Q13451

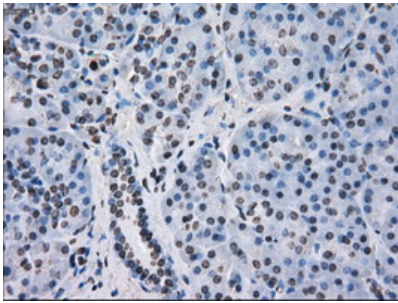
Technical Details

Immunogen	Full-length protein expressed in 293T cell transfected with human FKBP5 expression vector
Isotype	IgG1
Concentration	1 mg/ml
Purification	Purified from mouse ascites fluids or tissue culture supernatant by affinity chromatography (protein A/G)
Suggested Dilutions	WB: 1:2000 IHC: 1:50 IF: 1:100

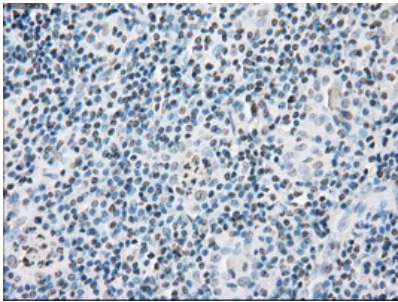
Anti-FKBP51 (FKBP5) Mouse Monoclonal Antibody [Clone ID: OTI3E9] (M04182-2) Images



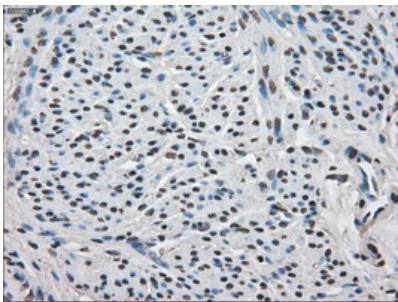
Anti-FKBP5 mouse monoclonal antibody (M04182-2) immunofluorescent staining of COS7 cells transiently transfected by pCMV6-ENTRY FKBP5.



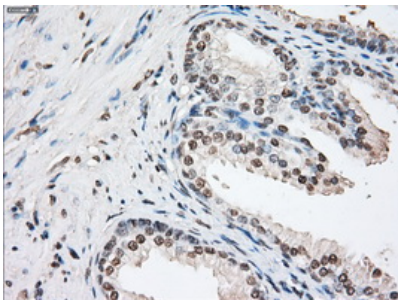
Immunohistochemical staining of paraffin-embedded pancreas tissue within the normal limits using anti-FKBP5 mouse monoclonal antibody. (Heat-induced epitope retrieval by 10mM citric buffer)



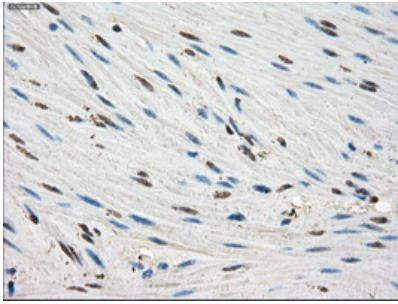
Immunohistochemical staining of paraffin-embedded Carcinoma of thyroid tissue using anti-FKBP5 mouse monoclonal antibody. (Heat-induced epitope retrieval by 10mM citric buffer)



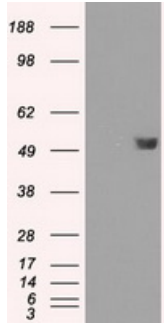
Immunohistochemical staining of paraffin-embedded endometrium tissue within the normal limits using anti-FKBP5 mouse monoclonal antibody. (Heat-induced epitope retrieval by 10mM citric buffer)



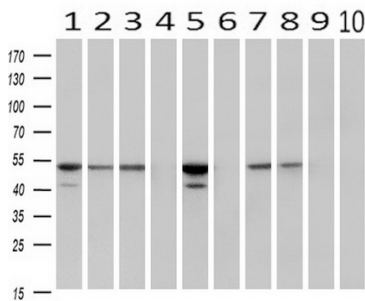
Immunohistochemical staining of paraffin-embedded prostate tissue within the normal limits using anti-FKBP5 mouse monoclonal antibody. (Heat-induced epitope retrieval by 10mM citric buffer)



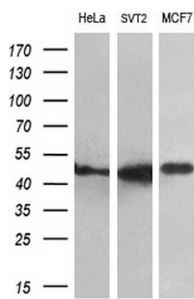
Immunohistochemical staining of paraffin-embedded colon tissue within the normal limits using anti-FKBP5 mouse monoclonal antibody. (Heat-induced epitope retrieval by 10mM citric buffer)



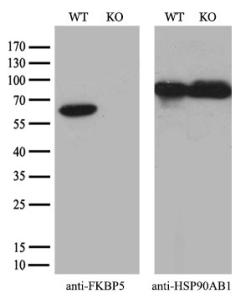
HEK293T cells were transfected with the pCMV6-ENTRY control (Left lane) or pCMV6-ENTRY FKBP5 (Right lane) cDNA for 48 hrs and lysed. Equivalent amounts of cell lysates (5 ug per lane) were separated by SDS-PAGE and immunoblotted with anti-FKBP5.



Western blot analysis of extracts (10ug) from 10 Human tissue by using anti-FKBP5 monoclonal antibody at 1:200 (1: Testis; 2: Omentum; 3: Uterus; 4: Breast; 5: Brain; 6: Liver; 7: Ovary; 8: Thyroid gland; 9: colon; 10: spleen).



Western blot analysis of extracts (10ug) from 3 different cell lines by using anti-FKBP5 monoclonal antibody (1:200).



Equivalent amounts of cell lysates (10 ug per lane) of wild-type HeLa cells (WT) and FKBP5-Knockout HeLa cells (KO) were separated by SDS-PAGE and immunoblotted with anti-FKBP5 monoclonal antibody M04182-2 (1:500). Then the blotted membrane was stripped and re-probed with anti-HSP90 antibody as a loading control.

Submit a product review to Biocompare.com

Submit a review of this product to Biocompare.com to receive a \$20 Amazon.com giftcard! Your reviews help your fellow scientists make the right decisions. Thank you for your contribution.



Anti-FKBP51 (FKBP5) Mouse Monoclonal Antibody [Clone ID: OT13E9]

For Research Use Only. Not for use in diagnostic procedures.