

Anti-RPL10 Mouse Monoclonal Antibody [Clone ID: OTI6B11]

Catalog Number: M04190

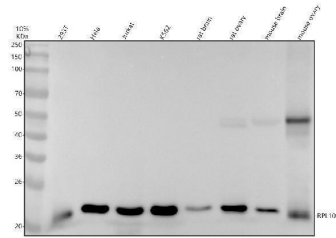
Overview

Product Name	Anti-RPL10 Mouse Monoclonal Antibody [Clone ID: OTI6B11]
Reactive Species	Human, Mouse, Rat
Description	Boster Bio RPL10 mouse monoclonal antibody, clone OTI6B11 (formerly 6B11). Catalog# M04190. Tested in IHC, WB. This antibody reacts with Human, Mouse, Rat.
Application	IHC, WB
Clonality	Monoclonal OTI6B11
Formulation	PBS (pH 7.3) containing 1% stabilizing protein, 50% glycerol and 0.02% sodium azide. This antibody is supplied in a stabilized formulation. Compatibility with conjugation reactions depends on the chemistry of the conjugation method used. For conjugation methods that are not compatible with the stabilizing components present in this formulation, a carrier-free antibody format is required.
Storage Instructions	Store at -20°C as received.
Host	Mouse
Uniprot ID	P27635

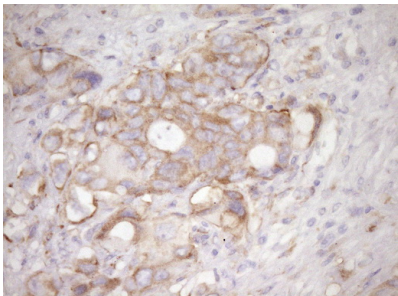
Technical Details

Immunogen	Full length human recombinant protein of human RPL10 (NP_006004) produced in E.coli.
Isotype	IgG2a
Concentration	1 mg/ml
Purification	Purified from mouse ascites fluids or tissue culture supernatant by affinity chromatography (protein A/G)
Suggested Dilutions	WB: 1:2000 IHC: 1:150

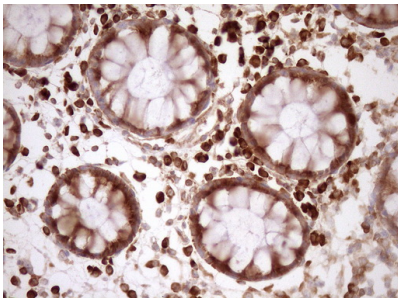
Anti-RPL10 Mouse Monoclonal Antibody [Clone ID: OTI6B11] (M04190) Images



Western blot analysis of RPL10 using anti-RPL10 antibody (M04190). Electrophoresis was performed on a 10% SDS-PAGE gel at 80V (Stacking gel) / 120V (Resolving gel) for 2 hours. The sample well of each lane was loaded with 30 ug of sample under reducing conditions. Lane 1: human 293T whole cell lysates, Lane 2: human Hela whole cell lysates, Lane 3: human Jurkat whole cell lysates, Lane 4: human K562 whole cell lysates, Lane 5: rat brain tissue lysates, Lane 6: rat ovary tissue lysates, Lane 7: mouse brain tissue lysates, Lane 8: mouse ovary tissue lysates. After electrophoresis, proteins were transferred to a nitrocellulose membrane at 150 mA for 50-90 minutes. Blocked the membrane with 5% non-fat milk/TBS for 1.5 hour at RT. The membrane was incubated with mouse anti-RPL10 antigen affinity purified monoclonal antibody (M04190) at 1:2000 overnight at 4°C, then washed with TBS-0.1% Tween 3 times with 5 minutes each and probed with a goat anti-mouse IgG-HRP secondary antibody at a dilution of 1:5000 for 1.5 hour at RT. The signal is developed using an ECL Plus Western Blotting Substrate (Catalog # AR1196-200) with Tanon 5200 system. A specific band was detected for RPL10 at approximately 25 kDa. The expected band size for RPL10 is at 25 kDa.

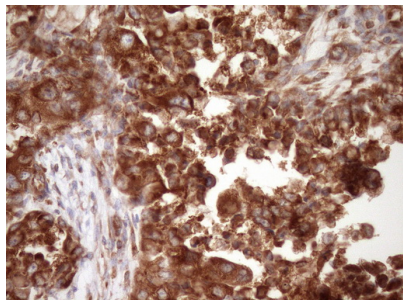
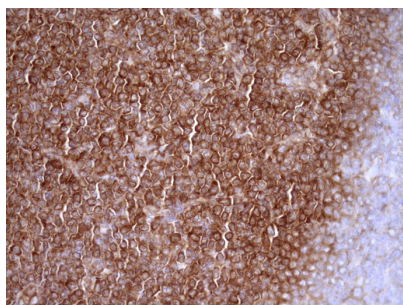


Immunohistochemical staining of paraffin-embedded Adenocarcinoma of Human colon tissue using anti-RPL10 mouse monoclonal antibody. (Heat-induced epitope retrieval by Tris-EDTA)

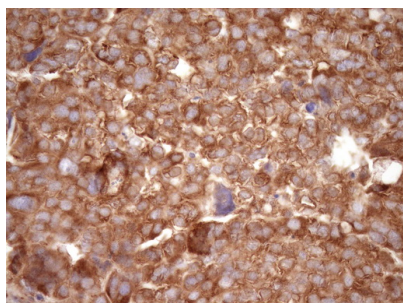


Immunohistochemical staining of paraffin-embedded Human colon tissue within the normal limits using anti-RPL10 mouse monoclonal antibody. (Heat-induced epitope retrieval by Tris-EDTA)

Immunohistochemical staining of paraffin-embedded Human lymphoma tissue using anti-RPL10 mouse monoclonal antibody. (Heat-induced epitope retrieval by Tris-EDTA)



Immunohistochemical staining of paraffin-embedded Adenocarcinoma of Human endometrium tissue using anti-RPL10 mouse monoclonal antibody. (Heat-induced epitope retrieval by Tris-EDTA)



Immunohistochemical staining of paraffin-embedded Adenocarcinoma of Human ovary tissue using anti-RPL10 mouse monoclonal antibody. (Heat-induced epitope retrieval by Tris-EDTA)

Submit a product review to Biocompare.com

Submit a review of this product to Biocompare.com to receive a \$20 Amazon.com giftcard! Your reviews help your fellow scientists make the right decisions. Thank you for your contribution.



Anti-RPL10 Mouse Monoclonal Antibody [Clone ID: OTI6B11]

For Research Use Only. Not for use in diagnostic procedures.