

Anti-Integrin Beta 5/ITGB5 Antibody (Monoclonal, 33116)

Catalog Number: M04201-1

About ITGB5

This gene encodes a beta subunit of integrin, which can combine with different alpha chains to form a variety of integrin heterodimers. Integrins are integral cell-surface receptors that participate in cell adhesion as well as cell-surface mediated signaling. The alphav beta5 integrin is involved in adhesion to vitronectin.

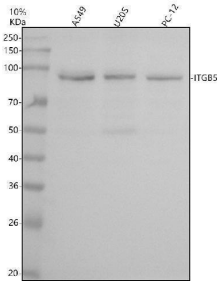
Overview

| | |
|----------------------|---|
| Product Name | Anti-Integrin Beta 5/ITGB5 Antibody (Monoclonal, 33116) |
| Reactive Species | Human, Monkey, Rat |
| Description | Boster Bio Anti-Integrin Beta 5/ITGB5 Antibody (Monoclonal, 33116) catalog # M04201-1. Tested in WB, IHC applications. This antibody reacts with Human, Rat, Monkey. |
| Application | IHC, WB |
| Clonality | Monoclonal 33116 |
| Formulation | Rabbit IgG in stabilizing components, phosphate buffered saline, pH 7.4, 150mM NaCl, 0.02% sodium azide and 50% glycerol. This antibody is supplied in a stabilized formulation. Compatibility with conjugation reactions depends on the chemistry of the conjugation method used. For conjugation methods that are not compatible with the stabilizing components present in this formulation, a carrier-free antibody format is required. |
| Storage Instructions | Store at -20°C for one year. For short term storage and frequent use, store at 4°C for up to one month. Avoid repeated freeze-thaw cycles. |
| Host | Rabbit |
| Uniprot ID | P18084 |

Technical Details

| | |
|---------------------|--|
| Immunogen | Recombinant protein within human Integrin beta 5 aa 3-717. |
| Form | Liquid |
| Concentration | 500 ug/ml |
| Purification | Protein A affinity purified. |
| Suggested Dilutions | Western blot, 1:500-2000 Immunohistochemistry, 1:50-200 |

Anti-Integrin Beta 5/ITGB5 Antibody (Monoclonal, 33I16) (M04201-1) Images



Western blot analysis of Integrin Beta 5/ITGB5 using anti-Integrin Beta 5/ITGB5 antibody (M04201-1). Electrophoresis was performed on a 10% SDS-PAGE gel at 80V (Stacking gel) / 120V (Resolving gel) for 2 hours. The sample well of each lane was loaded with 30 ug of sample under reducing conditions. Lane 1: human A549 whole cell lysates, Lane 2: human U2OS whole cell lysates, Lane 3: rat PC-12 whole cell lysates. After electrophoresis, proteins were transferred to a nitrocellulose membrane at 150 mA for 50-90 minutes. Blocked the membrane with 5% non-fat milk/TBS for 1.5 hour at RT. The membrane was incubated with rabbit anti-Integrin Beta 5/ITGB5 antigen affinity purified monoclonal antibody (M04201-1) at 1:500 overnight at 4°C, then washed with TBS-0.1%Tween 3 times with 5 minutes each and probed with a goat anti-rabbit IgG-HRP secondary antibody at a dilution of 1:5000 for 1.5 hour at RT. The signal is developed using an ECL Plus Western Blotting Substrate (Catalog # AR1196-200) with Tanon 5200 system. A specific band was detected for Integrin Beta 5/ITGB5 at approximately 88 kDa. The expected band size for Integrin Beta 5/ITGB5 is at 88 kDa.

Submit a product review to [Biocompare.com](https://www.biocompare.com)

Submit a review of this product to [Biocompare.com](https://www.biocompare.com) to receive a \$20 Amazon.com giftcard! Your reviews help your fellow scientists make the right decisions. Thank you for your contribution.



Anti-Integrin Beta 5/ITGB5 Antibody (Monoclonal, 33I16)

For Research Use Only. Not for use in diagnostic procedures.