

## Anti-Chromobox protein homolog 1 CBX1 Monoclonal Antibody

Catalog Number: M04206

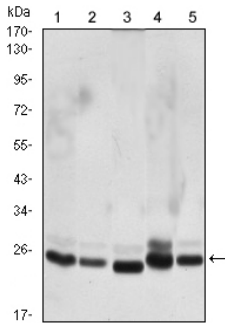
### Overview

Product Name	Anti-Chromobox protein homolog 1 CBX1 Monoclonal Antibody
Reactive Species	Human, Monkey
Description	Boster Bio Anti-Chromobox protein homolog 1 CBX1 Monoclonal Antibody catalog # M04206. Tested in ELISA, Flow Cytometry, IF, WB applications. This antibody reacts with Human, Monkey.
Application	ELISA, Flow Cytometry, IF, WB
Clonality	Monoclonal 5A3
Formulation	Ascitic fluid containing 0.03% sodium azide, 0.5% stabilizing protein, 50% glycerol This antibody is supplied in a stabilized formulation. Compatibility with conjugation reactions depends on the chemistry of the conjugation method used. For conjugation methods that are not compatible with the stabilizing components present in this formulation, a carrier-free antibody format is required.
Storage Instructions	Store at -20°C for one year. For short term storage and frequent use, store at 4°C for up to one month. Avoid repeated freeze-thaw cycles.
Host	Mouse
Uniprot ID	P83916

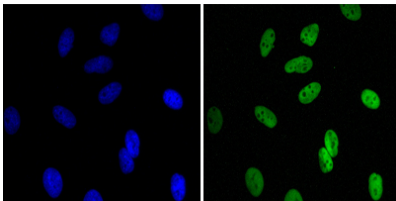
### Technical Details

Immunogen	Purified recombinant fragment of human CBX1 expressed in E. Coli.
Cross Reactivity	No cross reactivity with other proteins.
Isotype	IgG1
Form	Liquid
Concentration	1 mg/ml
Purification	Affinity purification
Suggested Dilutions	WB 1:500-1:2000 IF 1:200-1:1000 FC 1:200-1:400 ELISA 1:10000

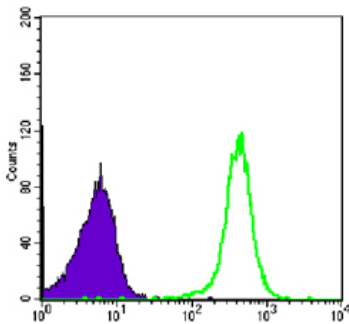
## Anti-Chromobox protein homolog 1 CBX1 Monoclonal Antibody (M04206) Images



Western Blot analysis using CBX1 Monoclonal Antibody against HeLa (1), COS7 (2), NIH/3T3 (3), A431 (4), and C6 (5) cell lysate.



Immunofluorescence analysis of HeLa cells using CBX1 Monoclonal Antibody (green). Blue: DRAQ5 fluorescent DNA dye.



Flow cytometric analysis of COS7 cells using CBX1 Monoclonal Antibody (green) and negative control (purple).

### Submit a product review to Biocompare.com

Submit a review of this product to Biocompare.com to receive a \$20 Amazon.com giftcard! Your reviews help your fellow scientists make the right decisions. Thank you for your contribution.



Anti-Chromobox protein homolog 1 CBX1 Monoclonal Antibody

For Research Use Only. Not for use in diagnostic procedures.