

Anti-HP beta CBX1 Monoclonal Antibody

Catalog Number: M04206-1

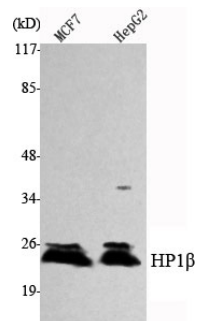
Overview

Product Name	Anti-HP beta CBX1 Monoclonal Antibody
Reactive Species	Bovine, Chicken, Dog, Human, Mouse, Pig, Rat
Description	Boster Bio Anti-HP beta CBX1 Monoclonal Antibody catalog # M04206-1. Tested in WB applications. This antibody reacts with Bovine, Canine, Chicken, Human, Mouse, Rat, Swine.
Application	WB
Clonality	Monoclonal 5A3
Formulation	Purified mouse monoclonal in buffer containing 0.1M Tris-Glycine (pH 7.4, 150 mM NaCl) with 0.2% sodium azide, 50% glycerol.
Storage Instructions	Store at -20°C for one year. For short term storage and frequent use, store at 4°C for up to one month. Avoid repeated freeze-thaw cycles.
Host	Mouse
Uniprot ID	P83916

Technical Details

Immunogen	Purified recombinant human HP1beta protein fragments expressed in E.coli.
Cross Reactivity	No cross reactivity with other proteins.
Isotype	IgG1
Form	Liquid
Concentration	1 mg/ml
Purification	Affinity purification
Suggested Dilutions	WB 1:1000-1:2000

Anti-HP beta CBX1 Monoclonal Antibody (M04206-1) Images



Western Blot analysis using HP1beta Monoclonal Antibody against MCF7, HepG2 cell lysate.

Submit a product review to Biocompare.com

Submit a review of this product to Biocompare.com to receive a \$20 Amazon.com giftcard! Your reviews help your fellow scientists make the right decisions. Thank you for your contribution.



Anti-HP beta CBX1 Monoclonal Antibody

For Research Use Only. Not for use in diagnostic procedures.