

## Anti-RAB14 Antibody

Catalog Number: M04231

### About RAB14

Involved in membrane trafficking between the Golgi complex and endosomes during early embryonic development. Regulates the Golgi to endosome transport of FGFR-containing vesicles during early development, a key process for developing basement membrane and epiblast and primitive endoderm lineages during early postimplantation development. May act by modulating the kinesin KIF16B-cargo association to endosomes (By similarity). Regulates, together with its guanine nucleotide exchange factor DENND6A, the specific endocytic transport of ADAM10, N-cadherin/CDH2 shedding and cell-cell adhesion.

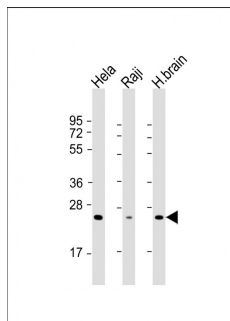
### Overview

Product Name	Anti-RAB14 Antibody
Reactive Species	Human
Description	Boster Bio Anti-RAB14 Antibody (Catalog # M04231). Tested in WB application(s). This antibody reacts with Human.
Application	WB
Clonality	Monoclonal 1779CT692.32.86
Formulation	Purified monoclonal antibody supplied in PBS with 0.09% (W/V) sodium azide.
Storage Instructions	Maintain refrigerated at 2-8°C for up to 2 weeks. For long-term storage, store at -20°C in small aliquots to prevent freeze-thaw cycles.
Host	Mouse
Uniprot ID	P61106

### Technical Details

Immunogen	This RAB14 antibody is generated from a mouse immunized with a recombinant protein of human RAB14.
Predicted Reactive Species	Chicken, Mouse
Isotype	IgG1,k
Purification	This antibody is purified through a protein G column, followed by dialysis against PBS.
Suggested Dilutions	WB: 1:2000

## Anti-RAB14 Antibody (M04231) Images



All lanes : Anti-RAB14 Antibody at 1:2000 dilution  
Lane 1: HeLa whole cell lysate  
Lane 2: Raji whole cell lysate  
Lane 3: human brain lysate  
Lysates/proteins at 20  $\mu$ g per lane.  
Secondary Goat Anti-mouse IgG, (H+L), Peroxidase conjugated at 1/10000 dilution. Predicted band size : 24 kDa  
Blocking/Dilution buffer: 5% NFDN/TBST.

## Submit a product review to Biocompare.com

Submit a review of this product to Biocompare.com to receive a \$20 Amazon.com giftcard! Your reviews help your fellow scientists make the right decisions. Thank you for your contribution.



### Anti-RAB14 Antibody

For Research Use Only. Not for use in diagnostic procedures.