

Anti-CD23 (FCER2) Mouse Monoclonal Antibody [Clone ID: OTI2B6]

Catalog Number: M04237-4

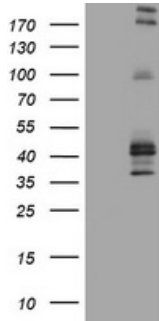
Overview

Product Name	Anti-CD23 (FCER2) Mouse Monoclonal Antibody [Clone ID: OTI2B6]
Reactive Species	Human
Description	Boster Bio FCER2 mouse monoclonal antibody, clone OTI2B6 (formerly 2B6). Catalog# M04237-4. Tested in FC, IHC, WB. This antibody reacts with Human.
Application	Flow Cytometry, IHC, WB
Clonality	Monoclonal OTI2B6
Formulation	PBS (pH 7.3) containing 1% stabilizing protein, 50% glycerol and 0.02% sodium azide. This antibody is supplied in a stabilized formulation. Compatibility with conjugation reactions depends on the chemistry of the conjugation method used. For conjugation methods that are not compatible with the stabilizing components present in this formulation, a carrier-free antibody format is required.
Storage Instructions	Store at -20°C as received.
Host	Mouse
Uniprot ID	P06734

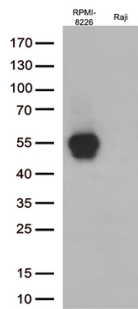
Technical Details

Immunogen	Human recombinant protein fragment corresponding to amino acids 48-321 of human FCER2 (NP_001993) produced in SF9 cell.
Isotype	IgG1
Concentration	1 mg/ml
Purification	Purified from mouse ascites fluids or tissue culture supernatant by affinity chromatography (protein A/G)
Suggested Dilutions	WB: 1:2000 IHC: 1:150 Flow Cytometry: 1:100

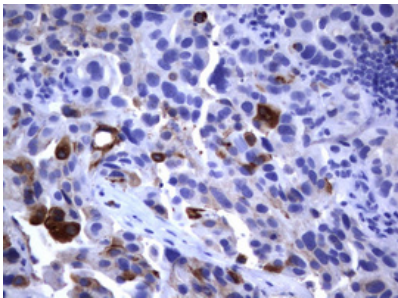
Anti-CD23 (FCER2) Mouse Monoclonal Antibody [Clone ID: OTI2B6] (M04237-4) Images



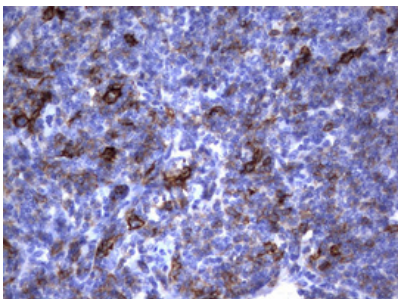
HEK293T cells were transfected with the pCMV6-ENTRY control (Left lane) or pCMV6-ENTRY FCER2 (Right lane) cDNA for 48 hrs and lysed. Equivalent amounts of cell lysates (5 ug per lane) were separated by SDS-PAGE and immunoblotted with anti-FCER2 (1:2000).



Western blot analysis of extracts (35ug) from 2 cell lines lysates by using anti-FCER2 monoclonal antibody (1:500).

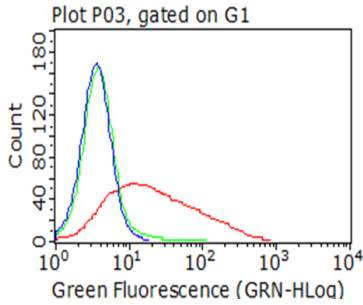
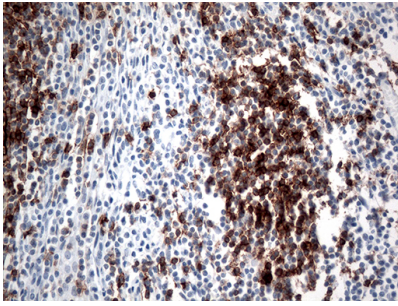


Immunohistochemical staining of paraffin-embedded Carcinoma of Human bladder tissue using anti-FCER2 mouse monoclonal antibody. (Heat-induced epitope retrieval by 10mM citric buffer)

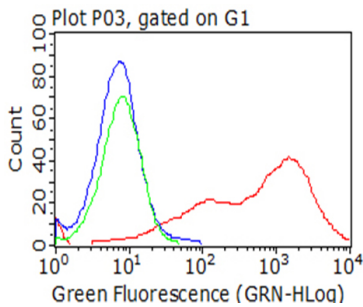


Immunohistochemical staining of paraffin-embedded Human lymphoma tissue using anti-FCER2 mouse monoclonal antibody. (Heat-induced epitope retrieval by 10mM citric buffer)

Immunohistochemical staining of paraffin-embedded Human tonsil within the normal limits using anti-FCER2 mouse monoclonal antibody. (Heat-induced epitope retrieval by 1mM EDTA in 10mM Tris buffer (pH8.5) at 120°C for 3min)



Flow cytometric analysis of living RPMI-8226 cells



Flow cytometric analysis of living 293T cells transfected with FCER2 overexpression plasmid

Submit a product review to Biocompare.com

Submit a review of this product to Biocompare.com to receive a \$20 Amazon.com giftcard! Your reviews help your fellow scientists make the right decisions. Thank you for your contribution.



Anti-CD23 (FCER2) Mouse Monoclonal Antibody [Clone ID: OTI2B6]

For Research Use Only. Not for use in diagnostic procedures.