

## Anti-PIP5K2 alpha (PIP4K2A) Mouse Monoclonal Antibody [Clone ID: OTI3D3]

Catalog Number: M04244

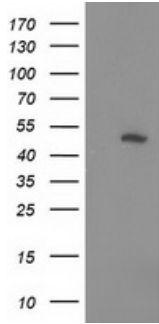
### Overview

|                      |  |
|----------------------|--|
| Product Name         | Anti-PIP5K2 alpha (PIP4K2A) Mouse Monoclonal Antibody [Clone ID: OTI3D3]   |
| Reactive Species     | Human, Mouse, Rat  |
| Description          | Boster Bio PIP4K2A mouse monoclonal antibody, clone OTI3D3 (formerly 3D3). Catalog# M04244. Tested in FC, IHC, WB. This antibody reacts with Human, Mouse, Rat.  |
| Application          | Flow Cytometry, IHC, WB  |
| Clonality            | Monoclonal OTI3D3  |
| Formulation          | PBS (pH 7.3) containing 1% stabilizing protein, 50% glycerol and 0.02% sodium azide. This antibody is supplied in a stabilized formulation. Compatibility with conjugation reactions depends on the chemistry of the conjugation method used. For conjugation methods that are not compatible with the stabilizing components present in this formulation, a carrier-free antibody format is required. |
| Storage Instructions | Store at -20°C as received.  |
| Host                 | Mouse  |
| Uniprot ID           | P48426   |

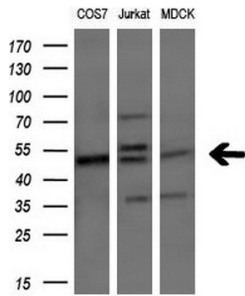
### Technical Details

|                     |   |
|---------------------|---|
| Immunogen           | Full length human recombinant protein of human PIP4K2A (NP_005019) produced in HEK293T cell.              |
| Isotype             | IgG1  |
| Concentration       | 0.9 mg/ml   |
| Purification        | Purified from mouse ascites fluids or tissue culture supernatant by affinity chromatography (protein A/G) |
| Suggested Dilutions | WB: 1:200 - 1:1000<br>IHC 1:150<br>Flow Cytometry 1:100   |

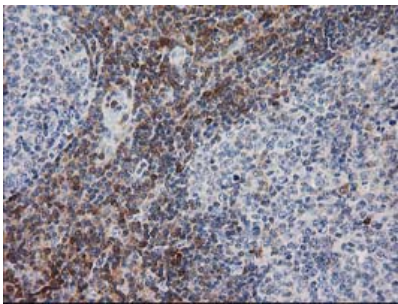
## Anti-PIP5K2 alpha (PIP4K2A) Mouse Monoclonal Antibody [Clone ID: OTI3D3] (M04244) Images



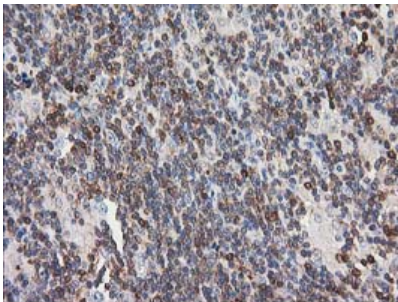
HEK293T cells were transfected with the pCMV6-ENTRY control (Left lane) or pCMV6-ENTRY PIP4K2A (Right lane) cDNA for 48 hrs and lysed. Equivalent amounts of cell lysates (5 ug per lane) were separated by SDS-PAGE and immunoblotted with anti-PIP4K2A.



Western blot analysis of extracts (10ug) from 3 different cell lines by using anti-PIP4K2A monoclonal antibody (1:200).

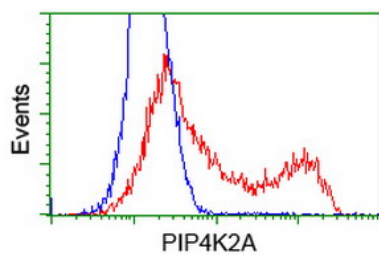


Immunohistochemical staining of paraffin-embedded Human lymph node tissue within the normal limits using anti-PIP4K2A mouse monoclonal antibody. (Heat-induced epitope retrieval by 10mM citric buffer)

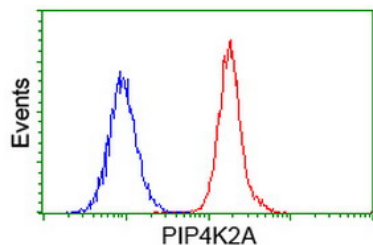


Immunohistochemical staining of paraffin-embedded Human lymphoma tissue using anti-PIP4K2A mouse monoclonal antibody. (Heat-induced epitope retrieval by 10mM citric buffer)

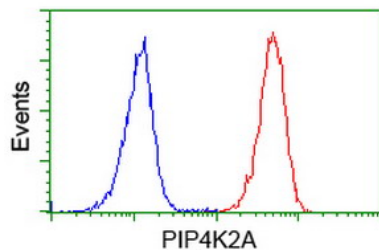
HEK293T cells transfected with either PIP4K2A (Myc-DDK-tagged) overexpress plasmid (Red) or empty vector control plasmid (Blue) were immunostained by anti-PIP4K2A antibody (M04244)



Flow cytometric Analysis of HeLa cells



Flow cytometric Analysis of Jurkat cells



## Submit a product review to [Biocompare.com](https://www.biocompare.com)

Submit a review of this product to [Biocompare.com](https://www.biocompare.com) to receive a \$20 Amazon.com giftcard! Your reviews help your fellow scientists make the right decisions. Thank you for your contribution.



Anti-PIP5K2 alpha (PIP4K2A) Mouse Monoclonal Antibody [Clone ID: OTI3D3]

For Research Use Only. Not for use in diagnostic procedures.