

## Anti-Coronin 1a (CORO1A) Mouse Monoclonal Antibody [Clone ID: OTI1A5]

Catalog Number: M04245-1

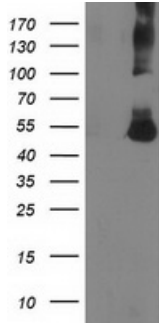
### Overview

Product Name	Anti-Coronin 1a (CORO1A) Mouse Monoclonal Antibody [Clone ID: OTI1A5]
Reactive Species	Human, Mouse, Rat
Description	Boster Bio CORO1A (Coronin 1a) mouse monoclonal antibody, clone OTI1A5 (formerly 1A5). Catalog# M04245-1. Tested in FC, IF, IHC, WB. This antibody reacts with Human, Mouse, Rat.
Application	Flow Cytometry, IF, IHC, WB
Clonality	Monoclonal OTI1A5
Formulation	PBS (pH 7.3) containing 1% stabilizing protein, 50% glycerol and 0.02% sodium azide. This antibody is supplied in a stabilized formulation. Compatibility with conjugation reactions depends on the chemistry of the conjugation method used. For conjugation methods that are not compatible with the stabilizing components present in this formulation, a carrier-free antibody format is required.
Storage Instructions	Store at -20°C as received.
Host	Mouse
Uniprot ID	P31146

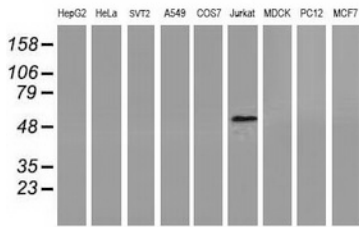
### Technical Details

Immunogen	Full length human recombinant protein of human CORO1A (NP_009005) produced in HEK293T cell.
Isotype	IgG1
Concentration	1 mg/ml
Purification	Purified from mouse ascites fluids or tissue culture supernatant by affinity chromatography (protein A/G)
Suggested Dilutions	WB: 1:500~2000 IHC 1:50 IF: 1:100 Flow cytometry: 1:100

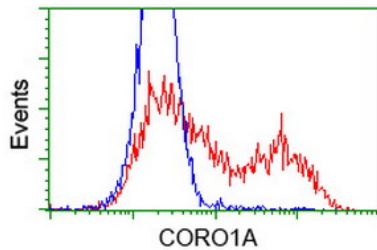
## Anti-Coronin 1a (CORO1A) Mouse Monoclonal Antibody [Clone ID: OTI1A5] (M04245-1) Images



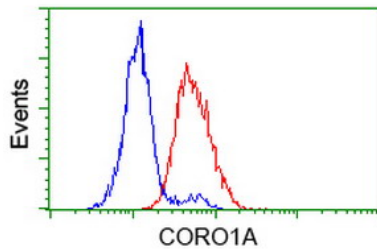
HEK293T cells were transfected with the pCMV6-ENTRY control (Left lane) or pCMV6-ENTRY CORO1A (Right lane) cDNA for 48 hrs and lysed. Equivalent amounts of cell lysates (5 ug per lane) were separated by SDS-PAGE and immunoblotted with anti-CORO1A.



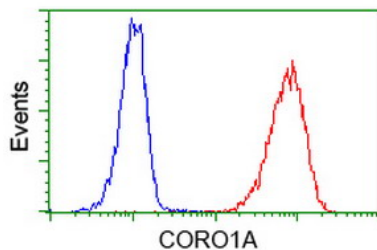
Western blot analysis of extracts (35ug) from 9 different cell lines by using anti-CORO1A monoclonal antibody.



HEK293T cells transfected with either CORO1A (Myc-DDK-tagged) overexpress plasmid (Red) or empty vector control plasmid (Blue) were immunostained by anti-CORO1A antibody (M04245-1)

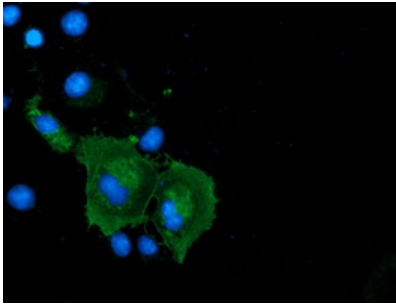


Flow cytometric Analysis of HeLa cells

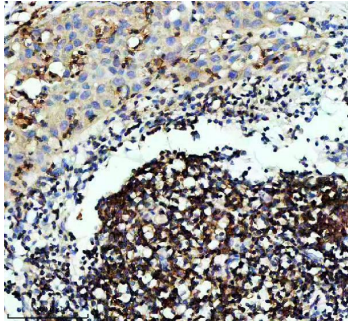


Flow cytometric Analysis of Jurkat cells

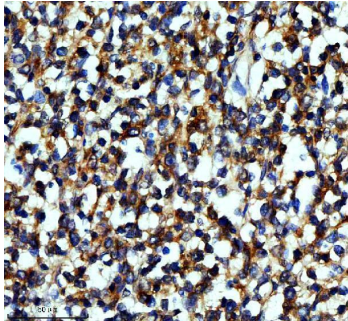
Anti-CORO1A mouse monoclonal antibody (M04245-1)



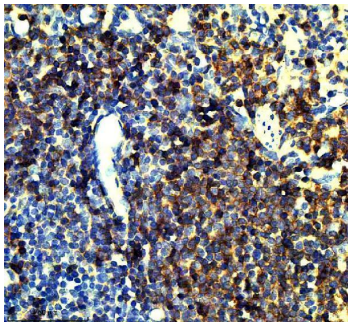
immunofluorescent staining of COS7 cells transiently transfected by pCMV6-ENTRY CORO1A.



IHC analysis of CORO1A using anti-CORO1A antibody (M04245-1). CORO1A was detected in a paraffin-embedded section of human bladder cancer tissue. Heat mediated antigen retrieval was performed in EDTA buffer (pH 8.0, epitope retrieval solution). The tissue section was blocked with 10% goat serum. The tissue section was then incubated with 1:50 rabbit anti-CORO1A Antibody (M04245-1) overnight at 4°C. Peroxidase Conjugated Goat Anti-rabbit IgG was used as secondary antibody and incubated for 30 minutes at 37°C. The tissue section was developed using HRP Conjugated Rabbit IgG Super Vision Assay Kit (Catalog # SV0002) with DAB as the chromogen.



IHC analysis of CORO1A using anti-CORO1A antibody (M04245-1). CORO1A was detected in a paraffin-embedded section of human lymphoma tissue. Heat mediated antigen retrieval was performed in EDTA buffer (pH 8.0, epitope retrieval solution). The tissue section was blocked with 10% goat serum. The tissue section was then incubated with 1:50 rabbit anti-CORO1A Antibody (M04245-1) overnight at 4°C. Peroxidase Conjugated Goat Anti-rabbit IgG was used as secondary antibody and incubated for 30 minutes at 37°C. The tissue section was developed using HRP Conjugated Rabbit IgG Super Vision Assay Kit (Catalog # SV0002) with DAB as the chromogen.



IHC analysis of CORO1A using anti-CORO1A antibody (M04245-1). CORO1A was detected in a paraffin-embedded section of mouse spleen tissue. Heat mediated antigen retrieval was performed in EDTA buffer (pH 8.0, epitope retrieval solution). The tissue section was blocked with 10% goat serum. The tissue section was then incubated with 1:50 rabbit anti-CORO1A Antibody (M04245-1) overnight at 4°C. Peroxidase Conjugated Goat Anti-rabbit IgG was used as secondary antibody and incubated for 30 minutes at 37°C. The tissue section was developed using HRP Conjugated Rabbit IgG Super Vision Assay Kit (Catalog # SV0002) with DAB as the chromogen.

Submit a product review to [Biocompare.com](https://www.biocompare.com)

Submit a review of this product to [Biocompare.com](https://www.biocompare.com) to receive a \$20 Amazon.com giftcard! Your reviews help your fellow scientists make the right decisions. Thank you for your contribution.



Anti-Coronin 1a (CORO1A) Mouse Monoclonal Antibody [Clone ID: OT11A5]

For Research Use Only. Not for use in diagnostic procedures.