

Anti-Calretinin (CALB2) Rabbit Monoclonal Antibody, Clone#RM324

Catalog Number: M04255-5

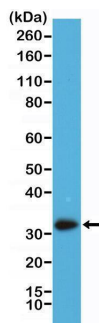
Overview

Product Name	Anti-Calretinin (CALB2) Rabbit Monoclonal Antibody, Clone#RM324
Reactive Species	Human
Description	Boster Bio Anti-Calretinin (CALB2) Rabbit Monoclonal Antibody, Clone#RM324 (Catalog # M04255-5). Tested in IHC, WB applications. This antibody reacts with Human.
Application	IHC, WB
Clonality	Monoclonal RM324
Formulation	50% Glycerol/PBS with 1% stabilizing protein and 0.09% sodium azide This antibody is supplied in a stabilized formulation. Compatibility with conjugation reactions depends on the chemistry of the conjugation method used. For conjugation methods that are not compatible with the stabilizing components present in this formulation, a carrier-free antibody format is required.
Storage Instructions	Store at -20°C for one year. Avoid repeated freeze-thaw cycles.
Host	Rabbit
Uniprot ID	P22676

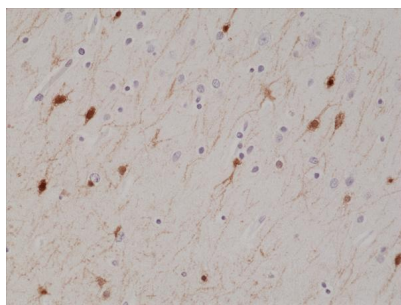
Technical Details

Immunogen	A peptide corresponding to N-terminus of human Calretinin
Predicted Reactive Species	Mouse, Rat
Cross Reactivity	This antibody reacts to human Calretinin. It may also react to mouse or rat Calretinin, as predicted by immunogen homology.
Isotype	Rabbit IgG
Form	Liquid
Concentration	0.5-1mg/ml, actual concentration vary by lot. Use suggested dilution ratio to decide dilution procedure.
Purification	Protein A affinity purified from an animal origin-free culture supernatant
Suggested Dilutions	Immunohistochemistry (IHC): 1:500-1:1000 dilution WB: 1:2000-1:4000 dilution.

Anti-Calretinin (CALB2) Rabbit Monoclonal Antibody, Clone#RM324 (M04255-5) Images



Western Blotting result Western Blot of A431 cell lysate using anti-Calretinin rabbit monoclonal antibody (Clone RM324) at a 1:2000 dilution.



IHC result Immunohistochemical staining of formalin fixed and paraffin embedded human brain tissue section using anti-Calretinin rabbit monoclonal antibody (Clone RM324) at a 1:1000 dilution.

Submit a product review to Biocompare.com

Submit a review of this product to Biocompare.com to receive a \$20 Amazon.com giftcard! Your reviews help your fellow scientists make the right decisions. Thank you for your contribution.



Anti-Calretinin (CALB2) Rabbit Monoclonal Antibody, Clone#RM324

For Research Use Only. Not for use in diagnostic procedures.