

Anti-SULF1 Antibody (C-Term)

Catalog Number: M04267

About SULF1

Exhibits arylsulfatase activity and highly specific endoglucosamine-6-sulfatase activity. It can remove sulfate from the C-6 position of glucosamine within specific subregions of intact heparin. Diminishes HSPG (heparan sulfate proteoglycans) sulfation, inhibits signaling by heparin-dependent growth factors, diminishes proliferation, and facilitates apoptosis in response to exogenous stimulation.

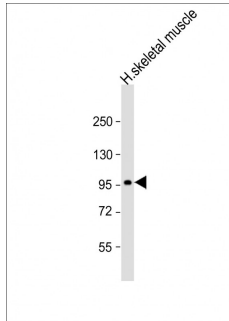
Overview

Product Name	Anti-SULF1 Antibody (C-Term)
Reactive Species	Human
Description	Boster Bio Anti-SULF1 Antibody (C-Term) (Catalog # M04267). Tested in WB, Flow Cytometry application(s). This antibody reacts with Human.
Application	Flow Cytometry, WB
Clonality	Polyclonal
Formulation	Purified polyclonal antibody supplied in PBS with 0.09% (W/V) sodium azide.
Storage Instructions	Maintain refrigerated at 2-8°C for up to 2 weeks. For long-term storage, store at -20°C in small aliquots to prevent freeze-thaw cycles.
Host	Rabbit
Uniprot ID	Q8IWU6

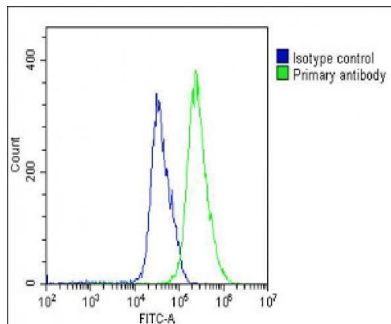
Technical Details

Immunogen	This SULF1 antibody is generated from a rabbit immunized with a KLH conjugated synthetic peptide between 704-738 amino acids from human SULF1.
Predicted Reactive Species	Chicken, Mouse
Isotype	Rabbit IgG
Purification	This antibody is purified through a protein A column, followed by peptide affinity purification.
Suggested Dilutions	WB: 1:2000 FC: 1:25

Anti-SULF1 Antibody (C-Term) (M04267) Images



Anti-SULF1 Antibody (C-Term) at 1:2000 dilution + human skeletal muscle lysate. Lysates/proteins at 20 µg per lane. Secondary Goat Anti-Rabbit IgG, (H+L), Peroxidase conjugated at 1/10000 dilution. Predicted band size : 101 kDa. Blocking/Dilution buffer: 5% NFD/MTBST.



Overlay histogram showing U-251 MG cells stained with M04267 (green line). The cells were fixed with 2% paraformaldehyde (10 min) and then permeabilized with 90% methanol for 10 min. The cells were then incubated in 2% bovine serum albumin to block non-specific protein-protein interactions followed by the antibody (M04267, 1:25 dilution) for 60 min at 37°C. The secondary antibody used was Goat-Anti-Rabbit IgG, DyLight® 488 Conjugated Highly Cross-Adsorbed at 1/200 dilution for 40 min at 37°C. Isotype control antibody (blue line) was rabbit IgG1 (1 µg/1x10⁶ cells) used under the same conditions. Acquisition of >10,000 events was performed.

Submit a product review to [Biocompare.com](https://www.biocompare.com)

Submit a review of this product to [Biocompare.com](https://www.biocompare.com) to receive a \$20 Amazon.com giftcard! Your reviews help your fellow scientists make the right decisions. Thank you for your contribution.



Anti-SULF1 Antibody (C-Term)

For Research Use Only. Not for use in diagnostic procedures.