

Anti-Ephrin type-B receptor 6 EphB6 Monoclonal Antibody

Catalog Number: M04270

About EPHB6

Anti Mesothelin Antibody recognizes Mesothelin that is a glycosyl-phosphatidylinositol-anchored glycoprotein present on the cell surface of various human solid tumors. The mesothelin (MSLN) gene encodes a 71-kDa precursor protein that is processed to a 40-kDa glycosylphosphatidylinositol-anchored protein that composes the mature portion and an NH2 terminal 31-kDa fragment called megakaryocyte-potentiating factor that is released from the cell. Mesothelin is a tumor differentiation antigen present at low levels on a restricted set of normal adult tissues, such as mesothelium, but aberrantly over expressed in mesotheliomas, ovarian, and pancreatic cancers. The biological functions of mesothelin remain elusive. A recent study showed that mesothelin binds to MUC16/CA125, and that this interaction mediates cell adhesion, suggesting that there may be an important role for MUC16/CA125 and mesothelin in the metastatic spread of ovarian cancer.

Overview

Product Name	Anti-Ephrin type-B receptor 6 EphB6 Monoclonal Antibody
Reactive Species	Human
Description	Boster Bio Anti-Ephrin type-B receptor 6 EphB6 Monoclonal Antibody catalog # M04270. Tested in ELISA, IHC, WB applications. This antibody reacts with Human.
Application	ELISA, IHC, WB
Clonality	Monoclonal 8E7H12
Formulation	Purified antibody in PBS containing 0.03% sodium azide.
Storage Instructions	Store at -20°C for one year. For short term storage and frequent use, store at 4°C for up to one month. Avoid repeated freeze-thaw cycles.
Host	Mouse
Uniprot ID	O15197

Technical Details

Immunogen	Purified recombinant fragment of EphB6 expressed in E. Coli.
Predicted Reactive Species	Chimpanzee, Macaque
Cross Reactivity	No cross reactivity with other proteins.
Isotype	IgG
Form	Liquid
Concentration	1 mg/ml

Purification	Affinity purification
Suggested Dilutions	<p>Dilute the sample so that the expected range of concentrations fall within the detection range of this kit.</p> <p>If the expected range of concentration is unknown, a pilot test should be conducted to decide the optimal dilution ratio for your samples.</p> <p>Some PubMed article(s) citing the expression level of this target are as follows:</p> <p>Boster Bio's internal QC testing used:</p> <p>WB 1:500-1:2000</p> <p>IHC 1:200-1:1000</p> <p>ELISA 1:10000</p>

Anti-Ephrin type-B receptor 6 EphB6 Monoclonal Antibody (M04270) Images

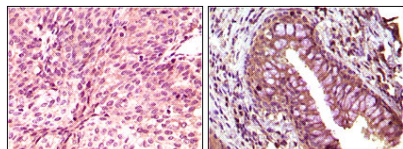


Figure 2. Immunohistochemistry validation of EPHB6 using Anti-Ephrin type-B receptor 6 EphB6 Monoclonal Antibody (M04270).

Immunohistochemistry (IHC) analysis of paraffin-embedded human bladder carcinoma (left) and rectal carcinoma (right) tissue

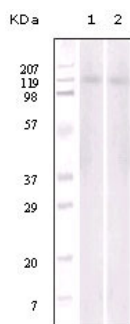


Figure 1. Western blotting validation for Anti-Ephrin type-B receptor 6 EphB6 Monoclonal Antibody M04270

Western Blot (WB) analysis using EphB6 Monoclonal Antibody against Jurkat (1) and NIH/3T3 (2) cell lysate. Electrophoresis was performed on a SDS-PAGE gel. To determine SDS-PAGE gel concentration

Submit a product review to Biocompare.com

Submit a review of this product to Biocompare.com to receive a \$20 Amazon.com giftcard! Your reviews help your fellow scientists make the right decisions. Thank you for your contribution.



Anti-Ephrin type-B receptor 6 EphB6 Monoclonal Antibody