

Anti-RYBP Mouse Monoclonal Antibody [Clone ID: OTI1B2]

Catalog Number: M04316

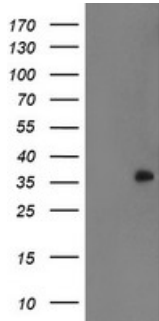
Overview

Product Name	Anti-RYBP Mouse Monoclonal Antibody [Clone ID: OTI1B2]
Reactive Species	Human, Mouse
Description	Boster Bio RYBP mouse monoclonal antibody, clone OTI1B2 (formerly 1B2). Catalog# M04316. Tested in IF, IHC, WB. This antibody reacts with Human, Mouse.
Application	IF, IHC, WB
Clonality	Monoclonal OTI1B2
Formulation	PBS (pH 7.3) containing 1% stabilizing protein, 50% glycerol and 0.02% sodium azide. This antibody is supplied in a stabilized formulation. Compatibility with conjugation reactions depends on the chemistry of the conjugation method used. For conjugation methods that are not compatible with the stabilizing components present in this formulation, a carrier-free antibody format is required.
Storage Instructions	Store at -20°C as received.
Host	Mouse
Uniprot ID	Q8N488

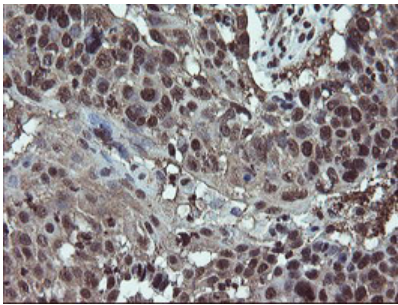
Technical Details

Immunogen	Full length human recombinant protein of human RYBP (NP_036366) produced in E.coli.
Isotype	IgG1
Concentration	1 mg/ml
Purification	Purified from mouse ascites fluids or tissue culture supernatant by affinity chromatography (protein A/G)
Suggested Dilutions	WB 1:2000 IHC 1:150 IF 1:100

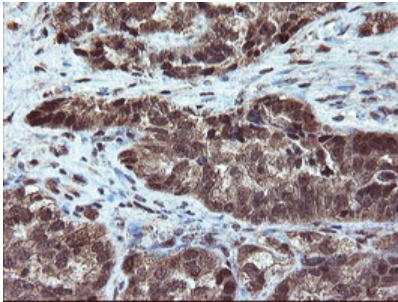
Anti-RYBP Mouse Monoclonal Antibody [Clone ID: OTI1B2] (M04316) Images



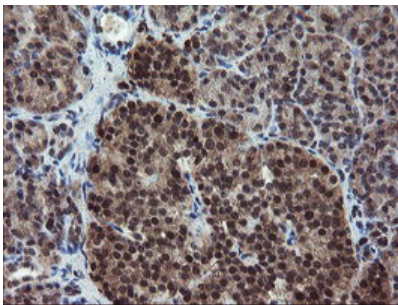
HEK293T cells were transfected with the pCMV6-ENTRY control (Left lane) or pCMV6-ENTRY RYBP (Right lane) cDNA for 48 hrs and lysed. Equivalent amounts of cell lysates (5 ug per lane) were separated by SDS-PAGE and immunoblotted with anti-RYBP.



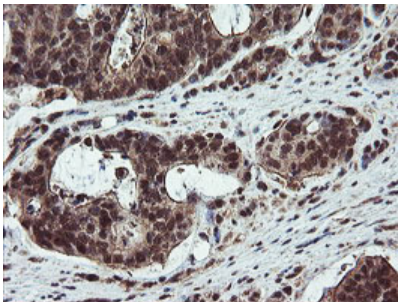
Immunohistochemical staining of paraffin-embedded Carcinoma of Human lung tissue using anti-RYBP mouse monoclonal antibody. (Heat-induced epitope retrieval by 10mM citric buffer)



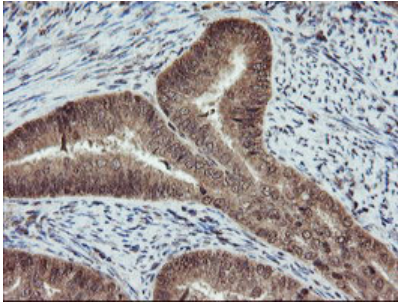
Immunohistochemical staining of paraffin-embedded Adenocarcinoma of Human ovary tissue using anti-RYBP mouse monoclonal antibody. (Heat-induced epitope retrieval by 10mM citric buffer)



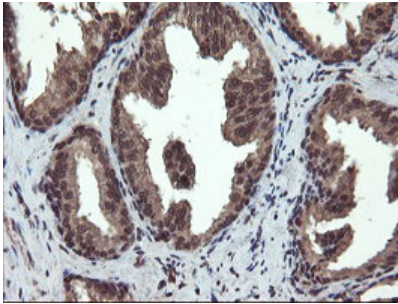
Immunohistochemical staining of paraffin-embedded Human pancreas tissue within the normal limits using anti-RYBP mouse monoclonal antibody. (Heat-induced epitope retrieval by 10mM citric buffer)



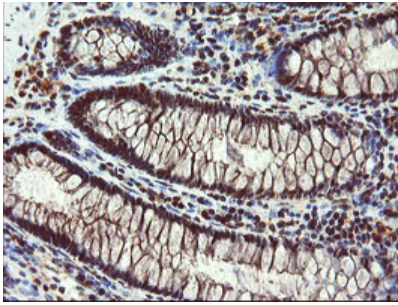
Immunohistochemical staining of paraffin-embedded Carcinoma of Human pancreas tissue using anti-RYBP mouse monoclonal antibody. (Heat-induced epitope retrieval by 10mM citric buffer)



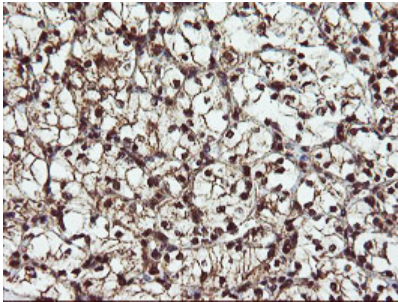
Immunohistochemical staining of paraffin-embedded Adenocarcinoma of Human endometrium tissue using anti-RYBP mouse monoclonal antibody. (Heat-induced epitope retrieval by 10mM citric buffer)



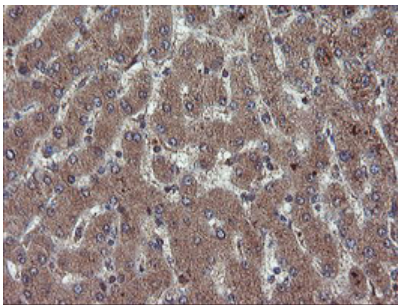
Immunohistochemical staining of paraffin-embedded Human prostate tissue within the normal limits using anti-RYBP mouse monoclonal antibody. (Heat-induced epitope retrieval by 10mM citric buffer)



Immunohistochemical staining of paraffin-embedded Human colon tissue within the normal limits using anti-RYBP mouse monoclonal antibody. (Heat-induced epitope retrieval by 10mM citric buffer)

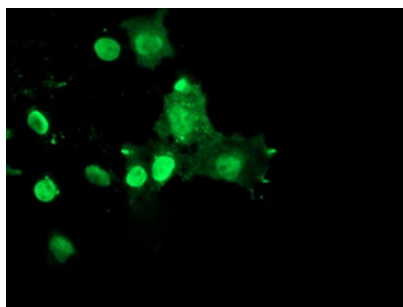


Immunohistochemical staining of paraffin-embedded Carcinoma of Human kidney tissue using anti-RYBP mouse monoclonal antibody. (Heat-induced epitope retrieval by 10mM citric buffer)



Immunohistochemical staining of paraffin-embedded Human liver tissue within the normal limits using anti-RYBP mouse monoclonal antibody. (Heat-induced epitope retrieval by 10mM citric buffer)

Anti-RYBP mouse monoclonal antibody (M04316)
immunofluorescent staining of COS7 cells transiently



transfected by pCMV6-ENTRY RYBP.

Submit a product review to Biocompare.com

Submit a review of this product to Biocompare.com to receive a \$20 Amazon.com giftcard! Your reviews help your fellow scientists make the right decisions. Thank you for your contribution.



Anti-RYBP Mouse Monoclonal Antibody [Clone ID: OT11B2]

For Research Use Only. Not for use in diagnostic procedures.