

Anti-RYBP Mouse Monoclonal Antibody [Clone ID: OTI2B4]

Catalog Number: M04316-1

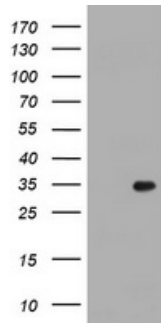
Overview

Product Name	Anti-RYBP Mouse Monoclonal Antibody [Clone ID: OTI2B4]
Reactive Species	Dog, Human, Monkey, Mouse
Description	Boster Bio RYBP mouse monoclonal antibody, clone OTI2B4 (formerly 2B4). Catalog# M04316-1. Tested in WB. This antibody reacts with Human, Monkey, Mouse, Dog.
Application	WB
Clonality	Monoclonal OTI2B4
Formulation	PBS (pH 7.3) containing 1% stabilizing protein, 50% glycerol and 0.02% sodium azide. This antibody is supplied in a stabilized formulation. Compatibility with conjugation reactions depends on the chemistry of the conjugation method used. For conjugation methods that are not compatible with the stabilizing components present in this formulation, a carrier-free antibody format is required.
Storage Instructions	Store at -20°C as received.
Host	Mouse
Uniprot ID	Q8N488

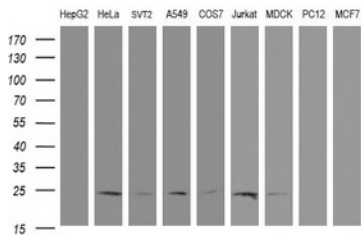
Technical Details

Immunogen	Full length human recombinant protein of human RYBP (NP_036366) produced in E.coli.
Isotype	IgG1
Concentration	1 mg/ml
Purification	Purified from mouse ascites fluids or tissue culture supernatant by affinity chromatography (protein A/G)
Suggested Dilutions	WB 1:2000

Anti-RYBP Mouse Monoclonal Antibody [Clone ID: OTI2B4] (M04316-1) Images



HEK293T cells were transfected with the pCMV6-ENTRY control (Left lane) or pCMV6-ENTRY RYBP (Right lane) cDNA for 48 hrs and lysed. Equivalent amounts of cell lysates (5 ug per lane) were separated by SDS-PAGE and immunoblotted with anti-RYBP.



Western blot analysis of extracts (35ug) from 9 different cell lines by using anti-RYBP monoclonal antibody (HepG2: human; HeLa: human; SVT2: mouse; A549: human; COS7: monkey; Jurkat: human; MDCK: canine; PC12: rat; MCF7: human).

Submit a product review to [Biocompare.com](https://www.biocompare.com)

Submit a review of this product to [Biocompare.com](https://www.biocompare.com) to receive a \$20 Amazon.com giftcard! Your reviews help your fellow scientists make the right decisions. Thank you for your contribution.



Anti-RYBP Mouse Monoclonal Antibody [Clone ID: OTI2B4]

For Research Use Only. Not for use in diagnostic procedures.