

Anti-RAB13 Antibody

Catalog Number: M04339

About RAB13

The small GTPases Rab are key regulators of intracellular membrane trafficking, from the formation of transport vesicles to their fusion with membranes. Rabs cycle between an inactive GDP-bound form and an active GTP-bound form that is able to recruit to membranes different sets of downstream effectors directly responsible for vesicle formation, movement, tethering and fusion. That Rab is involved in endocytic recycling and regulates the transport to the plasma membrane of transmembrane proteins like the tight junction protein OCLN/occludin. Thereby, it regulates the assembly and the activity of tight junctions. Moreover, it may also regulate tight junction assembly by activating the PKA signaling pathway and by reorganizing the actin cytoskeleton through the activation of the downstream effectors PRKACA and MICALL2 respectively. Through its role in tight junction assembly, may play a role in the establishment of Sertoli cell barrier. Plays also a role in angiogenesis through regulation of endothelial cells chemotaxis. Also involved in neurite outgrowth. Has also been proposed to play a role in post-Golgi membrane trafficking from the TGN to the recycling endosome. Finally, it has been involved in insulin- induced transport to the plasma membrane of the glucose transporter GLUT4 and therefore may play a role in glucose homeostasis.

Overview

Product Name	Anti-RAB13 Antibody
Reactive Species	Human
Description	Boster Bio Anti-RAB13 Antibody (Catalog # M04339). Tested in WB application(s). This antibody reacts with Human.
Application	WB
Clonality	Monoclonal 1600CT845.37.29
Formulation	Purified monoclonal antibody supplied in PBS with 0.09% (W/V) sodium azide.
Storage Instructions	Maintain refrigerated at 2-8°C for up to 2 weeks. For long-term storage, store at -20°C in small aliquots to prevent freeze-thaw cycles.
Host	Mouse
Uniprot ID	P51153

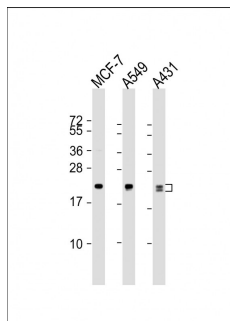
Technical Details

Immunogen	This RAB13 antibody is generated from a mouse immunized with a recombinant protein between 1-203 amino acids from human RAB13.
Predicted Reactive Species	Chicken, Mouse
Isotype	IgG1
Purification	This antibody is purified through a protein G column, followed by dialysis against PBS.

Suggested Dilutions

WB: 1:1000

Anti-RAB13 Antibody (M04339) Images



All lanes : Anti-RAB13 Antibody at 1:1000 dilution
Lane 1: MCF-7 whole cell lysate
Lane 2: A549 whole cell lysate
Lane 3: A431 whole cell lysate
Lysates/proteins at 20 µg per lane.
Secondary Goat Anti-mouse IgG, (H+L), Peroxidase conjugated at 1/10000 dilution. Predicted band size : 23 kDa
Blocking/Dilution buffer: 5% NFDN/TBST.

Submit a product review to Biocompare.com

Submit a review of this product to Biocompare.com to receive a \$20 Amazon.com giftcard! Your reviews help your fellow scientists make the right decisions. Thank you for your contribution.



Anti-RAB13 Antibody

For Research Use Only. Not for use in diagnostic procedures.