

## Anti-uPA (PLAU) Mouse Monoclonal Antibody [Clone ID: OTI5H4]

Catalog Number: M04352-1

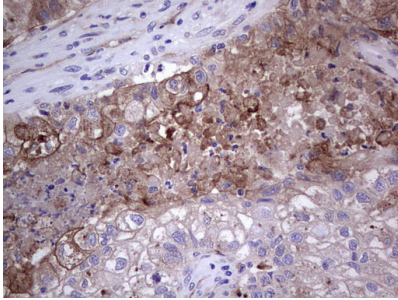
### Overview

Product Name	Anti-uPA (PLAU) Mouse Monoclonal Antibody [Clone ID: OTI5H4]
Reactive Species	Human
Description	Boster Bio PLAU mouse monoclonal antibody, clone OTI5H4 (formerly 5H4). Catalog# M04352-1. Tested in IHC, WB. This antibody reacts with Human.
Conjugate	Unconjugated
Application	IHC, WB
Clonality	Monoclonal OTI5H4
Formulation	PBS (pH 7.3) containing 1% stabilizing protein, 50% glycerol and 0.02% sodium azide. This antibody is supplied in a stabilized formulation. Compatibility with conjugation reactions depends on the chemistry of the conjugation method used. For conjugation methods that are not compatible with the stabilizing components present in this formulation, a carrier-free antibody format is required.
Storage Instructions	Store at -20°C for one year. For short term storage and frequent use, store at 4°C for up to one month. Avoid repeated freeze-thaw cycles.
Host	Mouse
Uniprot ID	P00749

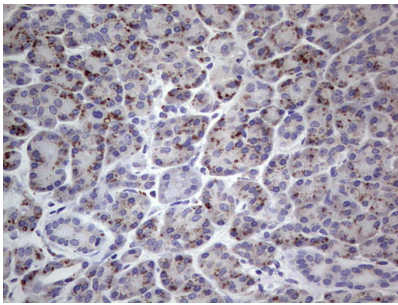
### Technical Details

Immunogen	Human recombinant protein fragment corresponding to amino acids 107-379 of human PLAU (NP_002649) produced in E.coli.
Isotype	IgG2a
Concentration	1 mg/ml
Purification	Purified from mouse ascites fluids or tissue culture supernatant by affinity chromatography (protein A/G)
Suggested Dilutions	WB: 1:2000 IHC: 1:150

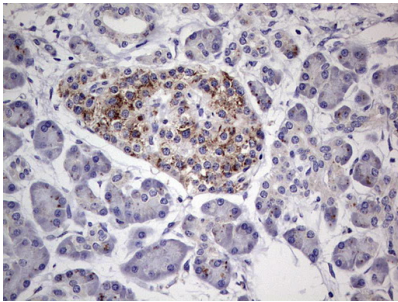
## Anti-uPA (PLAU) Mouse Monoclonal Antibody [Clone ID: OTI5H4] (M04352-1) Images



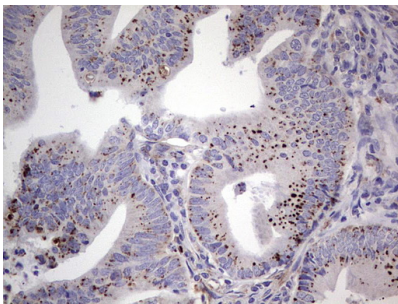
Immunohistochemical staining of paraffin-embedded Carcinoma of Human lung tissue using anti-PLAU mouse monoclonal antibody. (Heat-induced epitope retrieval by 1 mM EDTA in 10mM Tris)



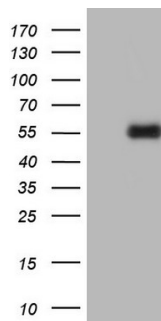
Immunohistochemical staining of paraffin-embedded Human pancreas tissue within the normal limits using anti-PLAU mouse monoclonal antibody. (Heat-induced epitope retrieval by 1 mM EDTA in 10mM Tris)



Immunohistochemical staining of paraffin-embedded Carcinoma of Human pancreas tissue using anti-PLAU mouse monoclonal antibody. (Heat-induced epitope retrieval by 1 mM EDTA in 10mM Tris)



Immunohistochemical staining of paraffin-embedded Adenocarcinoma of Human colon tissue using anti-PLAU mouse monoclonal antibody. (Heat-induced epitope retrieval by 1 mM EDTA in 10mM Tris)



HEK293T cells were transfected with the pCMV6-ENTRY control (Left lane) or pCMV6-ENTRY PLAU (Right lane) cDNA for 48 hrs and lysed. Equivalent amounts of cell lysates (5 ug per lane) were separated by SDS-PAGE and immunoblotted with anti-PLAU.

## Submit a product review to Biocompare.com

Submit a review of this product to Biocompare.com to receive a \$20 Amazon.com giftcard! Your reviews help your fellow scientists make the right decisions. Thank you for your contribution.



Anti-uPA (PLAU) Mouse Monoclonal Antibody [Clone ID: OT15H4]

For Research Use Only. Not for use in diagnostic procedures.