

## Anti-CREM Mouse Monoclonal Antibody [Clone ID: OT17A2]

Catalog Number: M04379

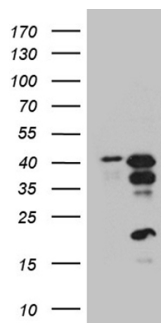
### Overview

Product Name	Anti-CREM Mouse Monoclonal Antibody [Clone ID: OT17A2]
Reactive Species	Human, Mouse, Rat
Description	Boster Bio CREM mouse monoclonal antibody, clone OT17A2. Catalog# M04379. Tested in WB. This antibody reacts with Human, Mouse, Rat.
Application	WB
Clonality	Monoclonal OT17A2
Formulation	PBS (pH 7.3) containing 1% stabilizing protein, 50% glycerol and 0.02% sodium azide. This antibody is supplied in a stabilized formulation. Compatibility with conjugation reactions depends on the chemistry of the conjugation method used. For conjugation methods that are not compatible with the stabilizing components present in this formulation, a carrier-free antibody format is required.
Storage Instructions	Store at -20°C as received.
Host	Mouse
Uniprot ID	Q03060

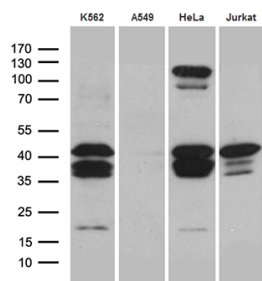
### Technical Details

Immunogen	Full length human recombinant protein of human CREM (NP_874388) produced in E.coli.
Isotype	IgG2a
Concentration	1 mg/ml
Purification	Purified from mouse ascites fluids or tissue culture supernatant by affinity chromatography (protein A/G)
Suggested Dilutions	WB 1:500~2000

## Anti-CREM Mouse Monoclonal Antibody [Clone ID: OT17A2] (M04379) Images



HEK293T cells were transfected with the pCMV6-ENTRY control (Left lane) or pCMV6-ENTRY CREM (Right lane) cDNA for 48 hrs and lysed. Equivalent amounts of cell lysates (5 ug per lane) were separated by SDS-PAGE and immunoblotted with anti-CREM.



Western blot analysis of extracts (35ug) from 4 cell lines by using anti-CREM monoclonal antibody (1:500).

### Submit a product review to [Biocompare.com](https://www.biocompare.com)

Submit a review of this product to [Biocompare.com](https://www.biocompare.com) to receive a \$20 Amazon.com giftcard! Your reviews help your fellow scientists make the right decisions. Thank you for your contribution.



Anti-CREM Mouse Monoclonal Antibody [Clone ID: OT17A2]

For Research Use Only. Not for use in diagnostic procedures.