

## Anti-LAT2 (SLC7A8) Mouse Monoclonal Antibody [Clone ID: OTI5A9]

Catalog Number: M04381

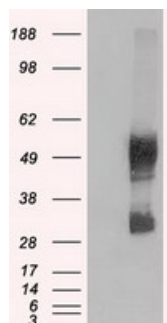
### Overview

Product Name	Anti-LAT2 (SLC7A8) Mouse Monoclonal Antibody [Clone ID: OTI5A9]
Reactive Species	Human, Mouse, Rat
Description	Boster Bio Anti-SLC7A8 (LAT2) mouse monoclonal antibody, clone OTI5A9 (formerly 5A9). Catalog# M04381. Tested in FC, IF, IHC, IP, WB. This antibody reacts with Human, Mouse, Rat.
Application	Flow Cytometry, IP, IF, IHC, WB
Clonality	Monoclonal OTI5A9
Formulation	PBS (pH 7.3) containing 1% BSA, 50% glycerol and 0.02% sodium azide.
Storage Instructions	Store at -20°C as received.
Host	Mouse
Uniprot ID	Q9UHI5

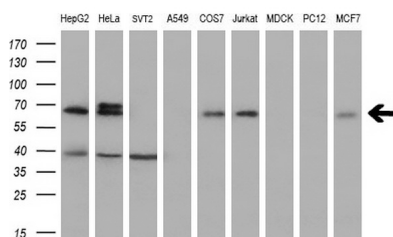
### Technical Details

Immunogen	Full-length protein expressed in 293T cell transfected with human SLC7A8 expression vector .
Isotype	IgG1
Concentration	1 mg/ml
Purification	Purified from mouse ascites fluids or tissue culture supernatant by affinity chromatography (protein A/G)
Suggested Dilutions	Dilute the sample so that the expected range of concentrations fall within the detection range of this kit. If the expected range of concentration is unknown, a pilot test should be conducted to decide the optimal dilution ratio for your samples. Some PubMed article(s) citing the expression level of this target are as follows:

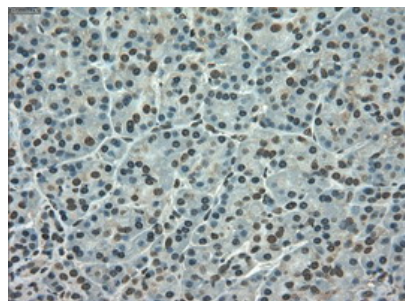
## Anti-LAT2 (SLC7A8) Mouse Monoclonal Antibody [Clone ID: OTI5A9] (M04381) Images



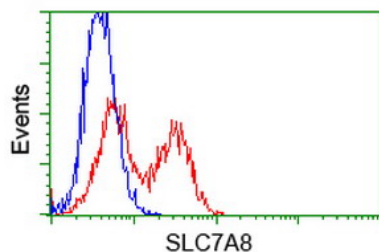
HEK293T cells were transfected with the pCMV6-ENTRY control (Left lane) or pCMV6-ENTRY SLC7A8 (Right lane) cDNA for 48 hrs and lysed. Equivalent amounts of cell lysates (5 ug per lane) were separated by SDS-PAGE and immunoblotted with anti-SLC7A8.



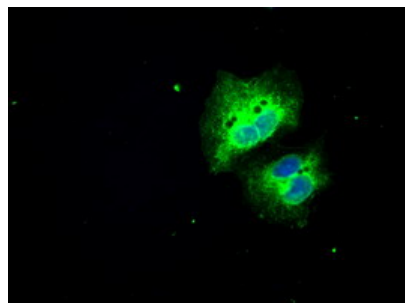
Western blot analysis of extracts (35ug) from 9 different cell lines by using anti-SLC7A8 monoclonal antibody (HepG2: human; HeLa: human; SVT2: mouse; A549: human; COS7: monkey; Jurkat: human; MDCK: canine; PC12: rat; MCF7: human) (1:200).



Immunohistochemical staining of paraffin-embedded Human pancreas tissue within the normal limits using anti-SLC7A8 mouse monoclonal antibody. (Heat-induced epitope retrieval by 10mM citric buffer)



HEK293T cells transfected with either SLC7A8 (Myc-DDK-tagged) overexpress plasmid (Red) or empty vector control plasmid (Blue) were immunostained by anti-SLC7A8 antibody (M04381)



Anti-SLC7A8 mouse monoclonal antibody (M04381) immunofluorescent staining of COS7 cells transiently transfected by pCMV6-ENTRY SLC7A8.

Submit a review of this product to Biocompare.com to receive a \$20 Amazon.com giftcard! Your reviews help your fellow scientists make the right decisions. Thank you for your contribution.



Anti-LAT2 (SLC7A8) Mouse Monoclonal Antibody [Clone ID: OTI5A9]