

## Anti-LAT2 (SLC7A8) Mouse Monoclonal Antibody [Clone ID: OTI4A6]

Catalog Number: M04381-2

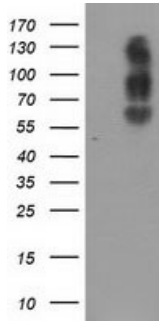
### Overview

Product Name	Anti-LAT2 (SLC7A8) Mouse Monoclonal Antibody [Clone ID: OTI4A6]
Reactive Species	Human, Monkey, Mouse, Rat
Description	Boster Bio SLC7A8 (LAT2) mouse monoclonal antibody, clone OTI4A6 (formerly 4A6). Catalog# M04381-2. Tested in FC, IF, WB. This antibody reacts with Human, Monkey, Mouse, Rat.
Application	Flow Cytometry, IF, WB
Clonality	Monoclonal OTI4A6
Formulation	PBS (pH 7.3) containing 1% stabilizing protein, 50% glycerol and 0.02% sodium azide. This antibody is supplied in a stabilized formulation. Compatibility with conjugation reactions depends on the chemistry of the conjugation method used. For conjugation methods that are not compatible with the stabilizing components present in this formulation, a carrier-free antibody format is required.
Storage Instructions	Store at -20°C as received.
Host	Mouse
Uniprot ID	Q9UHI5

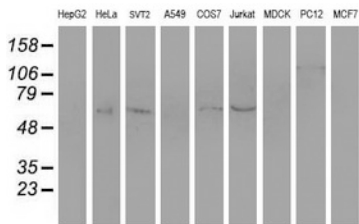
### Technical Details

Immunogen	Full length human recombinant protein of human SLC7A8 (NP_036376) produced in HEK293T cell.
Isotype	IgG1
Concentration	1 mg/ml
Purification	Purified from mouse ascites fluids or tissue culture supernatant by affinity chromatography (protein A/G)
Suggested Dilutions	WB 1:500~2000 IF 1:100 Flow Cytometry 1:100

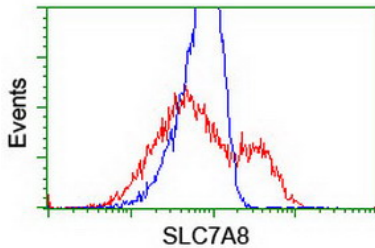
## Anti-LAT2 (SLC7A8) Mouse Monoclonal Antibody [Clone ID: OTI4A6] (M04381-2) Images



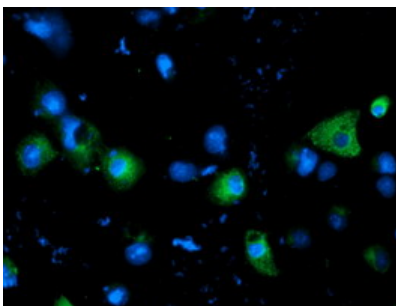
HEK293T cells were transfected with the pCMV6-ENTRY control (Left lane) or pCMV6-ENTRY SLC7A8 (Right lane) cDNA for 48 hrs and lysed. Equivalent amounts of cell lysates (5 ug per lane) were separated by SDS-PAGE and immunoblotted with anti-SLC7A8.



Western blot analysis of extracts (35ug) from 9 different cell lines by using anti-SLC7A8 monoclonal antibody.



HEK293T cells transfected with either SLC7A8 (Myc-DDK-tagged) overexpress plasmid (Red) or empty vector control plasmid (Blue) were immunostained by anti-SLC7A8 antibody (M04381-2)



Anti-SLC7A8 mouse monoclonal antibody (M04381-2) immunofluorescent staining of COS7 cells transiently transfected by pCMV6-ENTRY SLC7A8.

Submit a product review to [Biocompare.com](https://www.biocompare.com)

Submit a review of this product to [Biocompare.com](https://www.biocompare.com) to receive a \$20 Amazon.com giftcard! Your reviews help your fellow scientists make the right decisions. Thank you for your contribution.



Anti-LAT2 (SLC7A8) Mouse Monoclonal Antibody [Clone ID: OTI4A6]

For Research Use Only. Not for use in diagnostic procedures.