

Anti-eIF-2 alpha (pS51) EIF2S1 Rabbit Monoclonal Antibody, Clone#RM298

Catalog Number: M04387

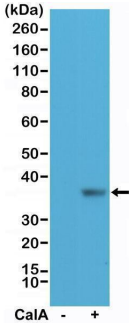
Overview

Product Name	Anti-eIF-2 alpha (pS51) EIF2S1 Rabbit Monoclonal Antibody, Clone#RM298
Reactive Species	Human
Description	Boster Bio Anti-eIF-2 alpha (pS51) EIF2S1 Rabbit Monoclonal Antibody, Clone#RM298 (Catalog # M04387). Tested in IHC, WB applications. This antibody reacts with Human.
Application	IHC, WB
Clonality	Monoclonal RM298
Formulation	50% Glycerol/PBS with 1% stabilizing protein and 0.09% sodium azide This antibody is supplied in a stabilized formulation. Compatibility with conjugation reactions depends on the chemistry of the conjugation method used. For conjugation methods that are not compatible with the stabilizing components present in this formulation, a carrier-free antibody format is required.
Storage Instructions	Store at -20°C for one year. Avoid repeated freeze-thaw cycles.
Host	Rabbit
Uniprot ID	P05198

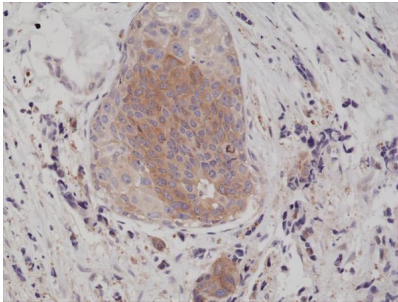
Technical Details

Immunogen	A phospho-peptide corresponding to human Phospho- eIF-2α (Ser51)
Predicted Reactive Species	Mouse, Rat
Cross Reactivity	Reacts to human eIF-2α (eukaryotic translation initiation factor 2 subunit alpha) only when phosphorylated at Ser51. No cross-reactivity to eIF-2α without phosphorylation at Ser51. May also react to mouse or rat Phospho-eIF-2α (Ser51).
Isotype	Rabbit IgG
Form	Liquid
Concentration	0.5-1mg/ml, actual concentration vary by lot. Use suggested dilution ratio to decide dilution procedure.
Purification	Protein A affinity purified from an animal origin-free culture supernatant
Suggested Dilutions	Immunohistochemistry (IHC): 1:100-1:200 dilution WB: 1:100-1:200 dilution.

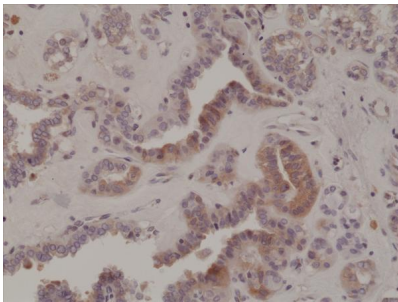
Anti-eIF-2 alpha (pS51) EIF2S1 Rabbit Monoclonal Antibody, Clone#RM298 (M04387) Images



Western Blotting result Western Blot of HeLa cell lysate nontreated (-) or treated (+) with Calyculin A (CalA), using anti-phospho-eIF-2 (Ser51) rabbit monoclonal antibody (clone RM298) at a 1:200 dilution.



IHC result Immunohistochemical staining of formalin fixed and paraffin embedded human breast cancer tissue section using anti-phospho-eIF-2 (Ser51) rabbit monoclonal antibody (clone RM298) at a 1:200 dilution.



IHC result Immunohistochemical staining of formalin fixed and paraffin embedded human thyroid cancer tissue section using anti-phospho-eIF-2 (Ser51) rabbit monoclonal antibody (clone RM298) at a 1:200 dilution.

Submit a product review to [Biocompare.com](https://www.biocompare.com)

Submit a review of this product to [Biocompare.com](https://www.biocompare.com) to receive a \$20 Amazon.com giftcard! Your reviews help your fellow scientists make the right decisions. Thank you for your contribution.



Anti-eIF-2 alpha (pS51) EIF2S1 Rabbit Monoclonal Antibody, Clone#RM298

For Research Use Only. Not for use in diagnostic procedures.