

Anti-WSTF (BAZ1B) Mouse Monoclonal Antibody [Clone ID: OTI3B8]

Catalog Number: M04438

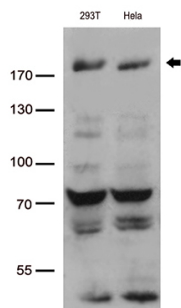
Overview

Product Name	Anti-WSTF (BAZ1B) Mouse Monoclonal Antibody [Clone ID: OTI3B8]
Reactive Species	Human, Mouse, Rat
Description	Boster Bio BAZ1B mouse monoclonal antibody, clone OTI3B8. Catalog# M04438. Tested in WB. This antibody reacts with Human, Mouse, Rat.
Conjugate	Unconjugated
Application	WB
Clonality	Monoclonal OTI3B8
Formulation	PBS (pH 7.3) containing 1% stabilizing protein, 50% glycerol and 0.02% sodium azide. This antibody is supplied in a stabilized formulation. Compatibility with conjugation reactions depends on the chemistry of the conjugation method used. For conjugation methods that are not compatible with the stabilizing components present in this formulation, a carrier-free antibody format is required.
Storage Instructions	Store at -20°C for one year. For short term storage and frequent use, store at 4°C for up to one month. Avoid repeated freeze-thaw cycles.
Host	Mouse
Uniprot ID	Q9UIG0

Technical Details

Immunogen	Human recombinant protein fragment corresponding to amino acids 1-260 of human BAZ1B (NP_115784) produced in E.coli.
Isotype	IgG2b
Concentration	1 mg/ml
Purification	Purified from mouse ascites fluids or tissue culture supernatant by affinity chromatography (protein A/G)
Suggested Dilutions	WB 1:500

Anti-WSTF (BAZ1B) Mouse Monoclonal Antibody [Clone ID: OTI3B8] (M04438) Images



Western blot analysis of extracts (35ug) from 2 cell lines lysates by using anti-BAZ1B monoclonal antibody (1:500).

Submit a product review to Biocompare.com

Submit a review of this product to Biocompare.com to receive a \$20 Amazon.com giftcard! Your reviews help your fellow scientists make the right decisions. Thank you for your contribution.



Anti-WSTF (BAZ1B) Mouse Monoclonal Antibody [Clone ID: OTI3B8]

For Research Use Only. Not for use in diagnostic procedures.