

Anti-ILF2 Mouse Monoclonal Antibody [Clone ID: OTI6F1]

Catalog Number: M04443

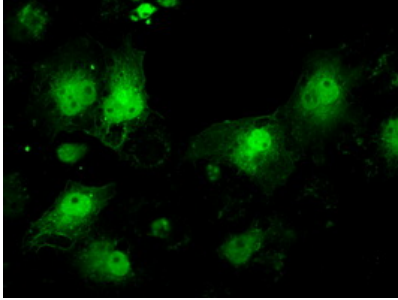
Overview

Product Name	Anti-ILF2 Mouse Monoclonal Antibody [Clone ID: OTI6F1]
Reactive Species	Dog, Human, Mouse
Description	Boster Bio Anti-ILF2 mouse monoclonal antibody, clone OTI6F1 (formerly 6F1). Catalog# M04443. Tested in IF, IHC, WB. This antibody reacts with Human, Mouse, Dog.
Conjugate	Unconjugated
Application	IF, IHC, WB
Clonality	Monoclonal OTI6F1
Formulation	PBS (pH 7.3) containing 1% stabilizing protein, 50% glycerol and 0.02% sodium azide. This antibody is supplied in a stabilized formulation. Compatibility with conjugation reactions depends on the chemistry of the conjugation method used. For conjugation methods that are not compatible with the stabilizing components present in this formulation, a carrier-free antibody format is required.
Storage Instructions	Store at -20°C for one year. For short term storage and frequent use, store at 4°C for up to one month. Avoid repeated freeze-thaw cycles.
Host	Mouse
Uniprot ID	Q12905

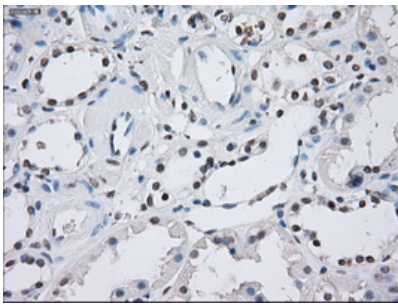
Technical Details

Immunogen	Full-length protein expressed in 293T cell transfected with human ILF2 expression vector
Isotype	IgG1
Concentration	1 mg/ml
Purification	Purified from mouse ascites fluids or tissue culture supernatant by affinity chromatography (protein A/G)
Suggested Dilutions	WB 1:500 IHC 1:50 IF 1:100

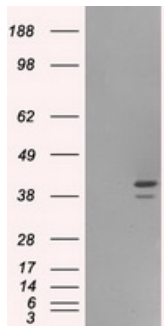
Anti-ILF2 Mouse Monoclonal Antibody [Clone ID: OTI6F1] (M04443) Images



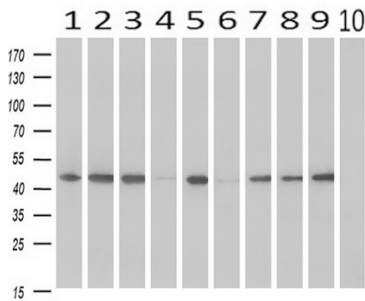
Anti-ILF2 mouse monoclonal antibody (M04443) immunofluorescent staining of COS7 cells transiently transfected by pCMV6-ENTRY ILF2.



Immunohistochemical staining of paraffin-embedded Kidney tissue within the normal limits using anti-ILF2 mouse monoclonal antibody. (Heat-induced epitope retrieval by 10mM citric buffer)

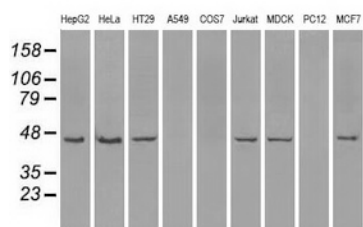


HEK293T cells were transfected with the pCMV6-ENTRY control (Left lane) or pCMV6-ENTRY ILF2 (Right lane) cDNA for 48 hrs and lysed. Equivalent amounts of cell lysates (5 ug per lane) were separated by SDS-PAGE and immunoblotted with anti-ILF2.



Western blot analysis of extracts (10ug) from 10 Human tissue by using anti-ILF2 monoclonal antibody at 1:500 (1: Testis; 2: Omentum; 3: Uterus; 4: Breast; 5: Brain; 6: Liver; 7: Ovary; 8: Thyroid gland; 9: colon; 10: spleen).

Western blot analysis of extracts (35ug) from 9 different cell lines by using anti-ILF2 monoclonal antibody.



Submit a product review to Biocompare.com

Submit a review of this product to Biocompare.com to receive a \$20 Amazon.com giftcard! Your reviews help your fellow scientists make the right decisions. Thank you for your contribution.



Anti-ILF2 Mouse Monoclonal Antibody [Clone ID: OTI6F1]

For Research Use Only. Not for use in diagnostic procedures.