

Anti-Selenium Binding Protein 1 (SELENBP1) Mouse Monoclonal Antibody [Clone ID: OTI3H1]

Catalog Number: M04444

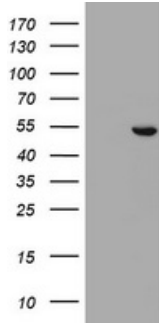
Overview

Product Name	Anti-Selenium Binding Protein 1 (SELENBP1) Mouse Monoclonal Antibody [Clone ID: OTI3H1]
Reactive Species	Human, Mouse, Rat
Description	Boster Bio SELENBP1 (Selenium Binding Protein 1) mouse monoclonal antibody, Clone Clone Clone Clone, clone OTI3H1 (formerly 3H1). Catalog# M04444. Tested in IHC, WB. This antibody reacts with Human, Mouse, Rat.
Application	IHC, WB
Clonality	Monoclonal OTI3H1
Formulation	PBS (pH 7.3) containing 1% stabilizing protein, 50% glycerol and 0.02% sodium azide. This antibody is supplied in a stabilized formulation. Compatibility with conjugation reactions depends on the chemistry of the conjugation method used. For conjugation methods that are not compatible with the stabilizing components present in this formulation, a carrier-free antibody format is required.
Storage Instructions	Store at -20°C as received.
Host	Mouse
Uniprot ID	Q13228

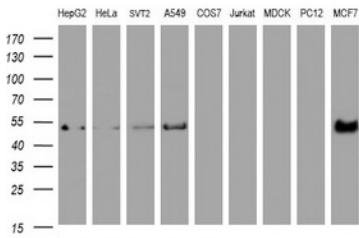
Technical Details

Immunogen	Full length human recombinant protein of human SELENB1 (NP_003935) produced in HEK293T cell.
Isotype	IgG2a
Concentration	1 mg/ml
Purification	Purified from mouse ascites fluids or tissue culture supernatant by affinity chromatography (protein A/G)
Suggested Dilutions	WB 1:2000 IHC 1:150

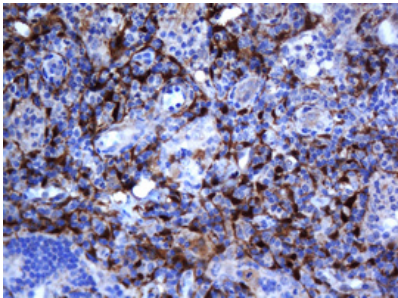
Anti-Selenium Binding Protein 1 (SELENBP1) Mouse Monoclonal Antibody [Clone ID: OTI3H1] (M04444) Images



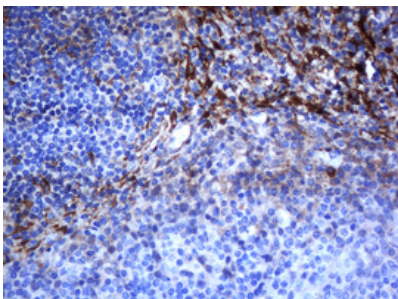
HEK293T cells were transfected with the pCMV6-ENTRY control (Left lane) or pCMV6-ENTRY SELENBP1 (Right lane) cDNA for 48 hrs and lysed. Equivalent amounts of cell lysates (5 ug per lane) were separated by SDS-PAGE and immunoblotted with anti-SELENBP1.



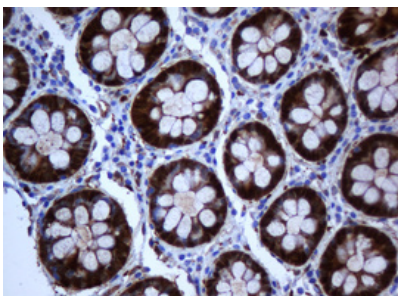
Western blot analysis of extracts (35ug) from 9 different cell lines by using anti-SELENBP1 monoclonal antibody (HepG2: human; HeLa: human; SVT2: mouse; A549: human; COS7: monkey; Jurkat: human; MDCK: canine; PC12: rat; MCF7: human).



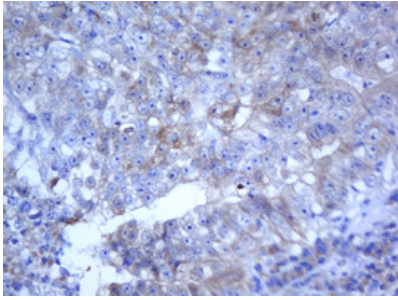
Immunohistochemical staining of paraffin-embedded Human lymph node tissue within the normal limits using anti-SELENBP1 mouse monoclonal antibody. (Heat-induced epitope retrieval by 10mM citric buffer)



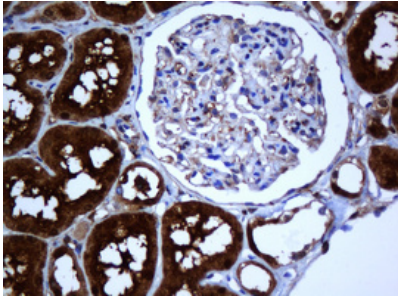
Immunohistochemical staining of paraffin-embedded Human tonsil within the normal limits using anti-SELENBP1 mouse monoclonal antibody. (Heat-induced epitope retrieval by 10mM citric buffer)



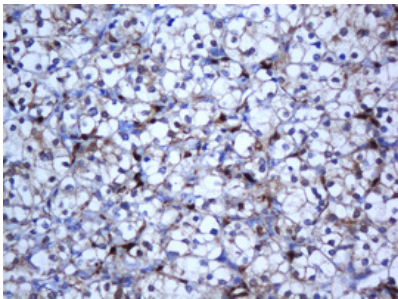
Immunohistochemical staining of paraffin-embedded Human colon tissue within the normal limits using anti-SELENBP1 mouse monoclonal antibody. (Heat-induced epitope retrieval by 10mM citric buffer)



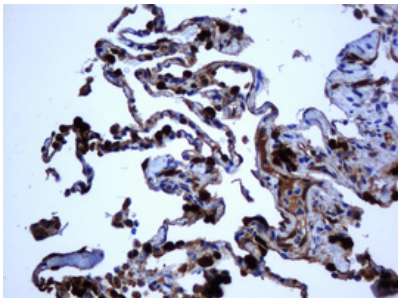
Immunohistochemical staining of paraffin-embedded Adenocarcinoma of Human colon tissue using anti-SELENBP1 mouse monoclonal antibody. (Heat-induced epitope retrieval by 10mM citric buffer)



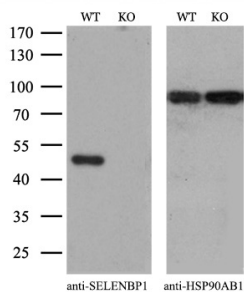
Immunohistochemical staining of paraffin-embedded Human Kidney tissue within the normal limits using anti-SELENBP1 mouse monoclonal antibody. (Heat-induced epitope retrieval by 10mM citric buffer)



Immunohistochemical staining of paraffin-embedded Carcinoma of Human kidney tissue using anti-SELENBP1 mouse monoclonal antibody. (Heat-induced epitope retrieval by 10mM citric buffer)



Immunohistochemical staining of paraffin-embedded Human lung tissue within the normal limits using anti-SELENBP1 mouse monoclonal antibody. (Heat-induced epitope retrieval by 10mM citric buffer)



Equivalent amounts of cell lysates (10 ug per lane) of wild-type HeLa cells (WT) and SELENBP1-Knockout HeLa cells (KO) were separated by SDS-PAGE and immunoblotted with anti-SELENBP1 monoclonal antibody M04444

Submit a review of this product to Biocompare.com to receive a \$20 Amazon.com giftcard! Your reviews help your fellow scientists make the right decisions. Thank you for your contribution.



Anti-Selenium Binding Protein 1 (SELENBP1) Mouse Monoclonal Antibody [Clone ID: OTI3H1]

For Research Use Only. Not for use in diagnostic procedures.