

Anti-TRIM29 (Lung Squamous Cell Carcinoma Marker) Monoclonal Antibody

Catalog Number: M04472

About TRIM29

This monoclonal antibody recognizes a 66kDa protein, which is identified as Tripartite motif-containing protein 29 (TRIM29). It interacts with the intermediate filament protein vimentin, a substrate for the PKC family of protein kinases, and with hPKC δ -1, an inhibitor of the PKCs. TRIM29 protein contains both zinc finger and leucine zipper motifs, suggesting that it may form homodimers and possibly associate with DNA. High expression of TRIM29 has been reported in gastric cancer and pancreatic cancer, and correlates with enhanced tumor growth and lymph node metastasis. TRIM29 is also able to distinguish lung squamous cell carcinoma from lung adenocarcinoma with ~90% positive accuracy, when used in a panel with TTF-1, p63, CK5/6, and Napsin-A antibodies.

Overview

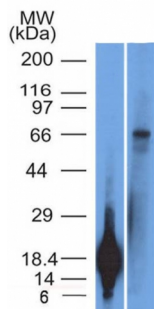
Product Name	Anti-TRIM29 (Lung Squamous Cell Carcinoma Marker) Monoclonal Antibody
Reactive Species	Human
Description	Boster Bio Anti-TRIM29 (Lung Squamous Cell Carcinoma Marker) Monoclonal Antibody (Catalog # M04472). Tested in WB applications. This antibody reacts with Human.
Conjugate	Biotin
Application	WB
Clonality	Monoclonal Clone: TRIM29/1042
Formulation	Prepared in 10mM PBS with 0.05% BSA & 0.05% azide. Also available WITHOUT BSA & azide at 1.0mg/ml.
Storage Instructions	Antibody with azide - store at 2 to 8°C. Antibody without azide - store at -20 to -80°C. Antibody is stable for 24 months. Non-hazardous. No MSDS required.
Host	Mouse
Uniprot ID	Q14134

Technical Details

Immunogen	Recombinant fragment (126 Amino acid residues between aa 1-200) of human TRIM29 protein
Predicted Reactive Species	Pig, Rabbit
Cross Reactivity	Does not cross-react with primate, avian or amphibian GR.
Isotype	IgG2b, kappa
Form	Liquid

Concentration	Purified antibody with BSA and azide at 200ug/ml
Purification	200ug/ml of antibody purified from Bioreactor Concentrate by Protein A/G.
Suggested Dilutions	<p>Dilute the sample so that the expected range of concentrations fall within the detection range of this kit.</p> <p>If the expected range of concentration is unknown, a pilot test should be conducted to decide the optimal dilution ratio for your samples.</p> <p>Some PubMed article(s) citing the expression level of this target are as follows:</p> <p>Boster Bio's internal QC testing used:</p> <p>Western Blot (1-2ug/ml)</p> <p>Optimal dilution for a specific application should be determined.</p>

Anti-TRIM29 (Lung Squamous Cell Carcinoma Marker) Monoclonal Antibody (M04472) Images



Western Blot analysis of TRIM29 Recombinant protein fragment & A431 cell lysate using Anti-TRIM29 Monoclonal Antibody (TRIM29/1042).

Submit a product review to Biocompare.com

Submit a review of this product to Biocompare.com to receive a \$20 Amazon.com giftcard! Your reviews help your fellow scientists make the right decisions. Thank you for your contribution.



Anti-TRIM29 (Lung Squamous Cell Carcinoma Marker) Monoclonal Antibody