

Anti-CENP-E Monoclonal Antibody

Catalog Number: M04553

About CENPE

CENP-E, Centrosome-associated protein E, is a kinesin-like minus-end directed microtubule motor protein that accumulates in the G₂ phase of the cell cycle. Unlike other centrosome-associated proteins, it is not present during interphase and first appears at the centromere region of chromosomes during prometaphase. CENP-E is proposed to be one of the motors responsible for mammalian chromosome movement and/or spindle elongation. CENP-E interacts with CENP-F and BUBR1 kinase. CENP-E associates with kinetochores during congression, relocates to the spindle midzone at anaphase, and is quantitatively discarded at the end of the cell division.

Overview

Product Name	Anti-CENP-E Monoclonal Antibody
Reactive Species	Human
Description	Boster Bio Anti-CENP-E Monoclonal Antibody (Catalog # M04553). Tested in IF, IP, WB applications. This antibody reacts with Human.
Application	ELISA, IP, IF, WB
Clonality	Monoclonal Clone: 1H12 IgG1
Formulation	0.02 M Potassium Phosphate, 0.15 M Sodium Chloride, pH 7.2, 0.01% (w/v) Sodium Azide
Storage Instructions	Store vial at -20°C prior to opening. Aliquot contents and freeze at -20°C or below for extended storage. Avoid cycles of freezing and thawing. Centrifuge product if not completely clear after standing at room temperature. This product is stable for several weeks at 4°C as an undiluted liquid. Dilute only prior to immediate use. Expiration date is one (1) year from date of opening. (Ship on dry ice.)
Host	Mouse
Uniprot ID	Q02224

Technical Details

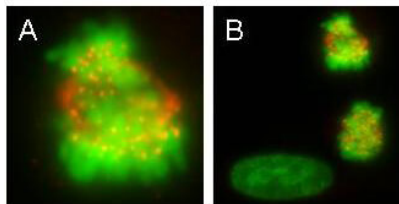
Immunogen	This protein A purified monoclonal antibody was produced by repeated immunizations with a full length recombinant protein corresponding to human CENP-E protein.
Predicted Reactive Species	Chimpanzee, Hamster
Isotype	IgG1
Form	Liquid (sterile filtered)
Concentration	1.0 mg/mL by UV absorbance at 280 nm
Purification	This Protein A purified antibody is directed against human CENP-E protein. The product was

purified from tissue culture supernatant by chromatography. This antibody reacts with CENP-E from human cells. Reactivity against homologues from other sources is not known.

Suggested Dilutions

ELISA: 1:5,000 - 1:20,000
IF Microscopy: 1:500 - 1:2,000
IP: 1:200
WB: 1:500 - 1:2,000
This protein A purified antibody has been tested for use in immunoprecipitation, immunofluorescence staining and western blot and is capable of detecting endogenous protein. Specific conditions for reactivity should be optimized by the end user. Expect a predominant band at ~ 320 kDa corresponding to full-length protein by western blotting in the appropriate cell lysate or extract.

Anti-CENP-E Monoclonal Antibody (M04553) Images



Boster's monoclonal anti-CENPE antibody was used to detect CENPE protein, visible as discrete nuclear dots on prometaphase and metaphase cells that relocate to the spindle midzone at anaphase (panel A). Interphase cells show no discrete staining (bottom left, panel B). HeLa cells were fixed in paraformaldehyde and stained using this primary antibody. AlexaFluor 555 TM conjugated anti-Mouse antibody (red) was used for detection. DNA was stained using bis-benzimide (DAPI) (green). Personal Communication, Tim Yen, Fox Chase Cancer Center, Philadelphia, PA.

Submit a product review to [Biocompare.com](https://www.biocompare.com)

Submit a review of this product to [Biocompare.com](https://www.biocompare.com) to receive a \$20 Amazon.com giftcard! Your reviews help your fellow scientists make the right decisions. Thank you for your contribution.



Anti-CENP-E Monoclonal Antibody

For Research Use Only. Not for use in diagnostic procedures.