

## Anti-Gephyrin (GPHN) Mouse Monoclonal Antibody [Clone ID: OTI3C6]

Catalog Number: M04560

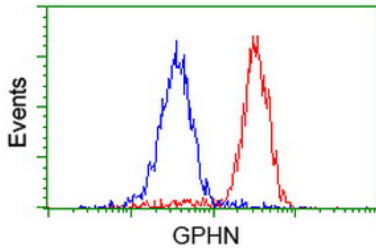
### Overview

|                      |  |
|----------------------|--|
| Product Name         | Anti-Gephyrin (GPHN) Mouse Monoclonal Antibody [Clone ID: OTI3C6]  |
| Reactive Species     | Human, Mouse, Rat  |
| Description          | Boster Bio GPHN (Gephyrin) mouse monoclonal antibody, clone OTI3C6 (formerly 3C6). Catalog# M04560. Tested in FC, IHC, WB. This antibody reacts with Human, Mouse, Rat.  |
| Conjugate            | Unconjugated   |
| Application          | Flow Cytometry, IHC, WB  |
| Clonality            | Monoclonal OTI3C6  |
| Formulation          | PBS (pH 7.3) containing 1% stabilizing protein, 50% glycerol and 0.02% sodium azide. This antibody is supplied in a stabilized formulation. Compatibility with conjugation reactions depends on the chemistry of the conjugation method used. For conjugation methods that are not compatible with the stabilizing components present in this formulation, a carrier-free antibody format is required. |
| Storage Instructions | Store at -20°C for one year. For short term storage and frequent use, store at 4°C for up to one month. Avoid repeated freeze-thaw cycles.   |
| Host                 | Mouse  |
| Uniprot ID           | Q9NQX3   |

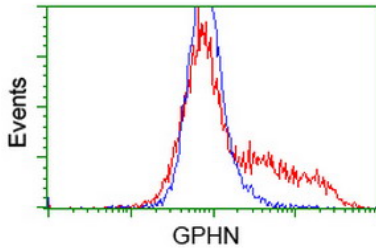
### Technical Details

|                     |   |
|---------------------|---|
| Immunogen           | Full length human recombinant protein of human GPHN (NP_065857) produced in HEK293T cell.                 |
| Isotype             | IgG2a   |
| Concentration       | 0.83 mg/ml  |
| Purification        | Purified from mouse ascites fluids or tissue culture supernatant by affinity chromatography (protein A/G) |
| Suggested Dilutions | WB 1:1000~2000<br>IHC 1:150<br>Flow Cytometry 1:100   |

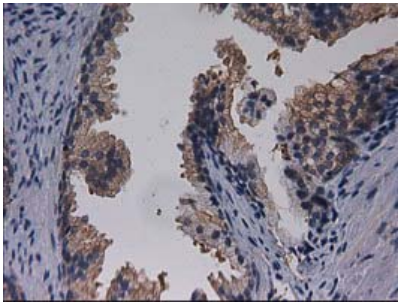
## Anti-Gephyrin (GPHN) Mouse Monoclonal Antibody [Clone ID: OTI3C6] (M04560) Images



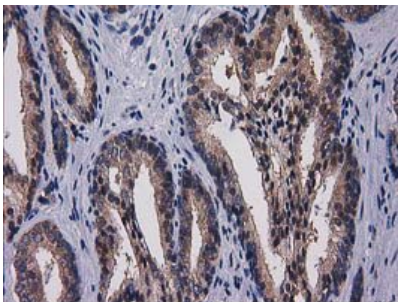
Flow cytometric Analysis of HeLa cells



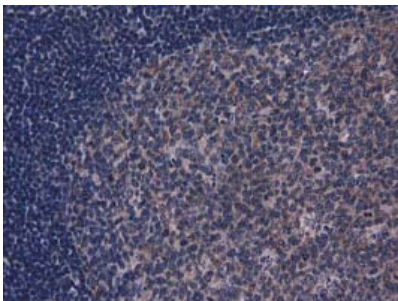
HEK293T cells transfected with either GPHN (Myc-DDK-tagged) overexpress plasmid (Red) or empty vector control plasmid (Blue) were immunostained by anti-GPHN antibody (M04560)



Immunohistochemical staining of paraffin-embedded Human prostate tissue within the normal limits using anti-GPHN mouse monoclonal antibody. (Heat-induced epitope retrieval by 10mM citric buffer)

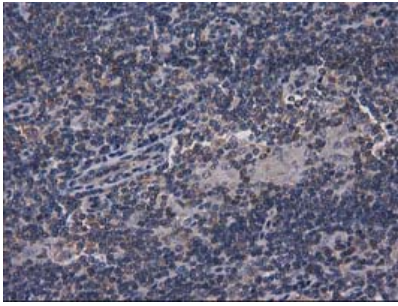


Immunohistochemical staining of paraffin-embedded Carcinoma of Human prostate tissue using anti-GPHN mouse monoclonal antibody. (Heat-induced epitope retrieval by 10mM citric buffer)

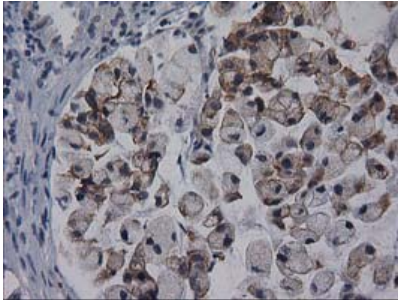


Immunohistochemical staining of paraffin-embedded Human lymph node tissue within the normal limits using anti-GPHN mouse monoclonal antibody. (Heat-induced epitope retrieval by 10mM citric buffer)

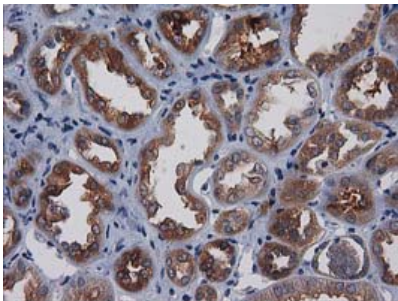
Immunohistochemical staining of paraffin-embedded Human



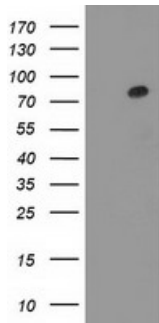
lymphoma tissue using anti-GPHN mouse monoclonal antibody. (Heat-induced epitope retrieval by 10mM citric buffer)



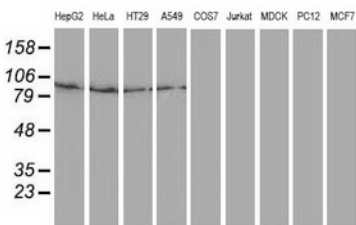
Immunohistochemical staining of paraffin-embedded Adenocarcinoma of Human colon tissue using anti-GPHN mouse monoclonal antibody. (Heat-induced epitope retrieval by 10mM citric buffer)



Immunohistochemical staining of paraffin-embedded Human Kidney tissue within the normal limits using anti-GPHN mouse monoclonal antibody. (Heat-induced epitope retrieval by 10mM citric buffer)



HEK293T cells were transfected with the pCMV6-ENTRY control (Left lane) or pCMV6-ENTRY GPHN (Right lane) cDNA for 48 hrs and lysed. Equivalent amounts of cell lysates (5 ug per lane) were separated by SDS-PAGE and immunoblotted with anti-GPHN.



Western blot analysis of extracts (35ug) from 9 different cell lines by using anti-GPHN monoclonal antibody.

Submit a product review to [Biocompare.com](https://www.biocompare.com)

Submit a review of this product to [Biocompare.com](https://www.biocompare.com) to receive a \$20 Amazon.com giftcard! Your



reviews help your fellow scientists make the right decisions. Thank you for your contribution.

**Anti-Gephyrin (GPHN) Mouse Monoclonal Antibody [Clone ID: OT13C6]**

**For Research Use Only. Not for use in diagnostic procedures.**