

Anti-Mouse IgG1 Rabbit Monoclonal Antibody, Clone#RM106

Catalog Number: M04575-2

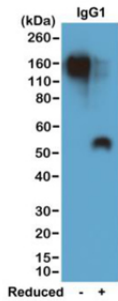
Overview

Product Name	Anti-Mouse IgG1 Rabbit Monoclonal Antibody, Clone#RM106
Reactive Species	Mouse
Description	Boster Bio Anti-Mouse IgG1 Rabbit Monoclonal Antibody, Clone#RM106 (Catalog # M04575-2). Tested in ELISA, WB applications. This antibody reacts with Mouse.
Application	ELISA, WB
Clonality	Monoclonal RM106
Formulation	50% Glycerol/PBS with 1% stabilizing protein and 0.09% sodium azide This antibody is supplied in a stabilized formulation. Compatibility with conjugation reactions depends on the chemistry of the conjugation method used. For conjugation methods that are not compatible with the stabilizing components present in this formulation, a carrier-free antibody format is required.
Storage Instructions	Store at -20°C for one year. Avoid repeated freeze-thaw cycles.
Host	Rabbit
Uniprot ID	P01868

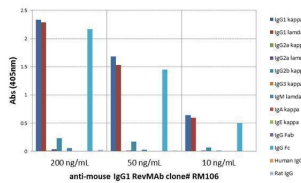
Technical Details

Immunogen	Mouse IgG
Cross Reactivity	This antibody reacts to the Fc region of mouse IgG1. No cross-reactivity with mouse IgG2a, IgG3, IgM, IgA, IgE, human IgG, or rat IgG. It may slightly cross-react to mouse IgG2b, and may also react to goat IgG.
Isotype	Rabbit IgG
Form	Liquid
Concentration	1 mg/mL
Purification	Protein A affinity purified from an animal origin-free culture supernatant
Suggested Dilutions	ELISA: 0.005 ug/mL-0.2 ug/mL WB: 0.1 ug/mL-0.5 ug/mL.

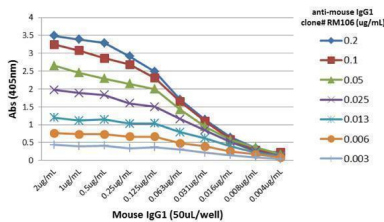
Anti-Mouse IgG1 Rabbit Monoclonal Antibody, Clone#RM106 (M04575-2) Images



Western blot of nonreduced(-) and reduced(+) mouse IgG1 (20ng/lane), using 0.2ug/mL of clone RM106. This antibody reacts to nonreduced IgG1 (~150 kDa) stronger than the reduced gamma1 form (~50 kDa).



ELISA of mouse immunoglobulins shows RM106 reacts to the Fc region of mouse IgG1; no cross reactivity with IgG2a, IgG3, IgM, IgA, IgE, human IgG, or rat IgG. The plate was coated with 50 ng/well of different immunoglobulins. 200 ng/mL, 50 ng/mL, or 10 ng/mL of RM106 was used as the primary antibody. An alkaline phosphatase conjugated anti-rabbit IgG as the secondary antibody.



ELISA of mouse immunoglobulins shows RM106 reacts to the Fc region of mouse IgG1; no cross reactivity with IgG2a, IgG3, IgM, IgA, IgE, human IgG, or rat IgG. The plate was coated with 50 ng/well of different immunoglobulins. 200 ng/mL, 50 ng/mL, or 10 ng/mL of RM106 was used as the primary antibody. An alkaline phosphatase conjugated anti-rabbit IgG as the secondary antibody.

Submit a product review to Biocompare.com

Submit a review of this product to Biocompare.com to receive a \$20 Amazon.com giftcard! Your reviews help your fellow scientists make the right decisions. Thank you for your contribution.



Anti-Mouse IgG1 Rabbit Monoclonal Antibody, Clone#RM106

For Research Use Only. Not for use in diagnostic procedures.