

Anti-Human Gamma Heavy Chain IGHG1 Rabbit Monoclonal Antibody, Clone#RM116

Catalog Number: M04575-4

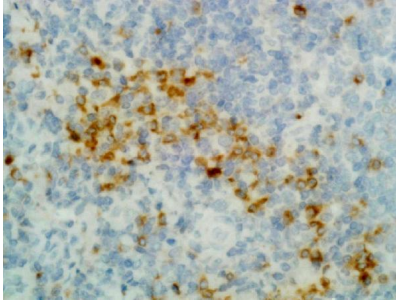
Overview

Product Name	Anti-Human Gamma Heavy Chain IGHG1 Rabbit Monoclonal Antibody, Clone#RM116
Reactive Species	Human
Description	Boster Bio Anti-Human Gamma Heavy Chain IGHG1 Rabbit Monoclonal Antibody, Clone#RM116 (Catalog # M04575-4). Tested in ELISA, ICC, IHC applications. This antibody reacts with Human.
Application	ELISA, IHC, ICC
Clonality	Monoclonal RM116
Formulation	50% Glycerol/PBS with 1% stabilizing protein and 0.09% sodium azide This antibody is supplied in a stabilized formulation. Compatibility with conjugation reactions depends on the chemistry of the conjugation method used. For conjugation methods that are not compatible with the stabilizing components present in this formulation, a carrier-free antibody format is required.
Storage Instructions	Store at -20°C for one year. Avoid repeated freeze-thaw cycles.
Host	Rabbit
Uniprot ID	P01857

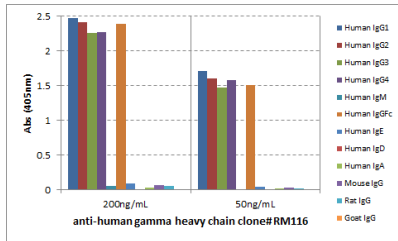
Technical Details

Immunogen	Human IgG
Cross Reactivity	This antibody reacts to the Fc region of all gamma heavy chains of human immunoglobulins, including gamma1, gamma2, gamma3, and gamma4. No cross-reactivity with other human heavy chains, mouse IgG, rat IgG or goat IgG
Isotype	Rabbit IgG
Form	Liquid
Concentration	1 mg/mL
Purification	Protein A affinity purified from an animal origin-free culture supernatant
Suggested Dilutions	ELISA: 50ng/well – 200ng/well (for Capture) 0.05ug/mL – 0.2ug/mL (for Detection) Immunocytochemistry (ICC): 0.5ug/mL-2ug/mL Immunohistochemistry (IHC): 0.5ug/mL-2ug/mL.

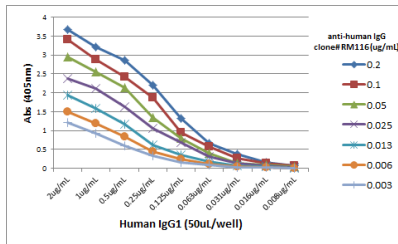
Anti-Human Gamma Heavy Chain IGHG1 Rabbit Monoclonal Antibody, Clone#RM116 (M04575-4) Images



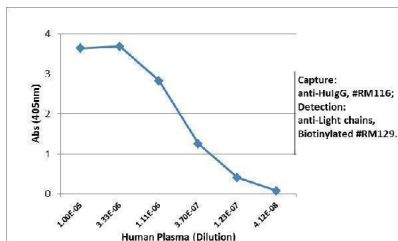
IHC result: Immunohistochemistry of human tonsil using anti-gamma heavy chain antibody RM116.



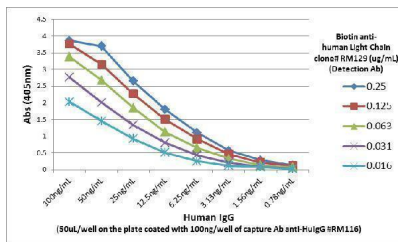
ELISA result showing specificity: ELISA of human immunoglobulins shows RM116 reacted to the $\gamma 1$, $\gamma 2$, $\gamma 3$, $\gamma 4$ heavy chain of human IgGs, and the Fc of human IgG. No cross reactivity with other human heavy chains, mouse IgG, rat IgG, or goat IgG. The plate was coated with 50 ng/well of different immunoglobulins. 200 ng/mL or 50 ng/mL of RM116 was used as the primary antibody. An alkaline phosphatase conjugated anti-rabbit IgG as the secondary antibody.



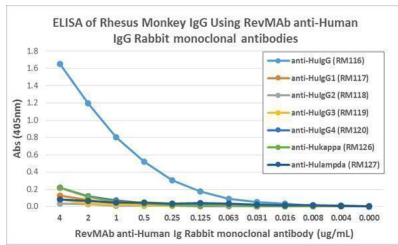
ELISA result showing specificity: A titer ELISA using RM116. The plate was coated with different amounts of human IgG1. A serial dilution of RM116 was used as the primary antibody. An alkaline phosphatase conjugated anti-rabbit IgG as the secondary antibody.



ELISA result showing specificity: Cross-activity data of anti-human IgG antibodies against monkey IgG. ELISA plate was coated with 0.1ug/well (2ug/mL, 50uL/well) of Rhesus monkey IgG (protein A purified from serum). A serial dilution of anti-human IgG (RM116), anti-human IgG1 (RM117), anti-human IgG2 (RM118), anti-human IgG3 (RM119), (anti-human IgG4 (RM120), anti-human kappa (RM126), and anti-human lambda (RM127) was used as the primary antibody. An alkaline phosphatase conjugated anti-rabbit IgG as the secondary antibody.



ELISA result showing specificity: Cross-activity data of anti-human IgG antibodies against monkey IgG. ELISA plate was coated with 0.1ug/well (2ug/mL, 50uL/well) of Rhesus monkey IgG (protein A purified from serum). A serial dilution of anti-human IgG (RM116), anti-human IgG1 (RM117), anti-human IgG2 (RM118), anti-human IgG3 (RM119), (anti-human IgG4 (RM120), anti-human kappa (RM126), and anti-human lambda (RM127) was used as the primary antibody. An alkaline phosphatase conjugated anti-rabbit IgG as the secondary antibody.



ELISA result showing specificity data of anti-human IgG antibodies against monkey IgG. ELISA plate was coated with 0.1ug/well (2ug/mL, 50uL/well) of Rhesus monkey IgG (protein A purified from serum). A serial dilution of anti-human IgG (RM116), anti-human IgG1 (RM117), anti-human IgG2 (RM118), anti-human IgG3 (RM119), anti-human IgG4 (RM120), anti-human kappa (RM126), and anti-human lambda (RM127) was used as the primary antibody. An alkaline phosphatase conjugated anti-rabbit IgG as the secondary antibody.

Submit a product review to Biocompare.com

Submit a review of this product to Biocompare.com to receive a \$20 Amazon.com giftcard! Your reviews help your fellow scientists make the right decisions. Thank you for your contribution.



Anti-Human Gamma Heavy Chain IGHG1 Rabbit Monoclonal Antibody, Clone#RM116

For Research Use Only. Not for use in diagnostic procedures.