

Anti-Human IgG1 IGHG1 Rabbit Monoclonal Antibody, Clone#RM117

Catalog Number: M04575-5

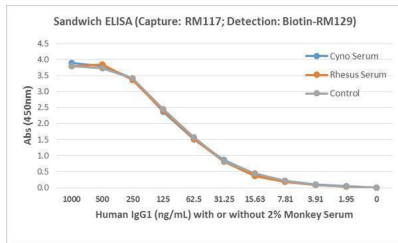
Overview

Product Name	Anti-Human IgG1 IGHG1 Rabbit Monoclonal Antibody, Clone#RM117
Reactive Species	Human
Description	Boster Bio Anti-Human IgG1 IGHG1 Rabbit Monoclonal Antibody, Clone#RM117 (Catalog # M04575-5). Tested in ELISA, ICC, IHC, Flow Cytometry applications. This antibody reacts with Human.
Application	ELISA, Flow Cytometry, IHC, ICC
Clonality	Monoclonal RM117
Formulation	50% Glycerol/PBS with 1% stabilizing protein and 0.09% sodium azide This antibody is supplied in a stabilized formulation. Compatibility with conjugation reactions depends on the chemistry of the conjugation method used. For conjugation methods that are not compatible with the stabilizing components present in this formulation, a carrier-free antibody format is required.
Storage Instructions	Store at -20°C for one year. Avoid repeated freeze-thaw cycles.
Host	Rabbit
Uniprot ID	P01857

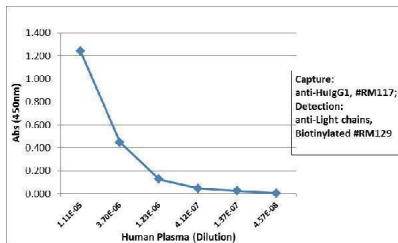
Technical Details

Immunogen	Peptide corresponding to the hinge region of Human IgG1
Cross Reactivity	Reacts to the heavy chain of human IgG1. RM117 does not cross-react to any other IgG subclasses (IgG2, IgG3, IgG4), and shows no cross-reactivity to IgM, IgA, IgD, IgE. RM117 does not react to monkey (Cyno or Rhesus) IgG, mouse IgG, rat IgG, or goat IgG.
Isotype	Rabbit IgG
Form	Liquid
Concentration	1 mg/mL
Purification	Protein A affinity purified from an animal origin-free culture supernatant
Suggested Dilutions	ELISA: 50ng/well - 200ng/well (for Capture) 0.05ug/mL - 0.2ug/mL (for Detection) Immunocytochemistry (ICC): 0.5ug/mL-2ug/mL Immunohistochemistry (IHC): 0.5ug/mL-2ug/mL Flow Cytometry (FC): 2ug/mL-8ug/mL.

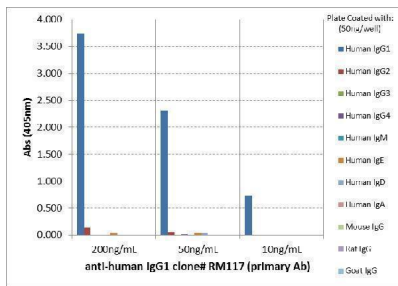
Anti-Human IgG1 IGHG1 Rabbit Monoclonal Antibody, Clone#RM117 (M04575-5) Images



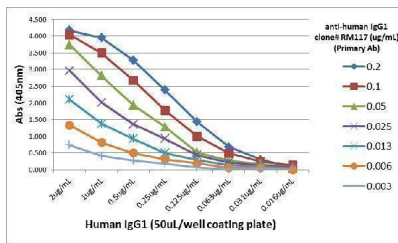
ELISA result showing specificity Detection of human IgG1 in monkey serum, using RM117 (capture) and biotin-RM129 (detection) as a Sandwich ELISA pair. HRP conjugated streptavidin and TMB were used to yield the colorimetric reaction.



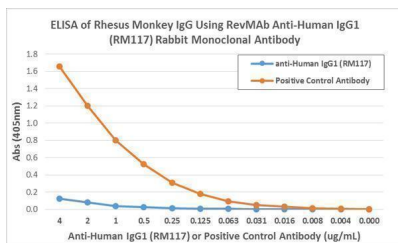
ELISA result showing specificity Sandwich ELISA using RM117 as the capture antibody, and Biotinylated anti-human light chains (k+) antibody RM129 as the detection antibody, followed by an AP conjugated streptavidin



ELISA result showing specificity ELISA of human immunoglobulins shows RM117 only reacted to human IgG1. No cross reactivity with Human IgG2, IgG3, IgG4, IgE, IgD, IgA, mouse IgG, rat IgG, or goat IgG. The plate was coated with 50 ng/well of different immunoglobulins. 200 ng/mL, 50 ng/mL, or 10 ng/mL of RM117 was used as the primary antibody. An alkaline phosphatase conjugated anti-rabbit IgG as the secondary antibody.

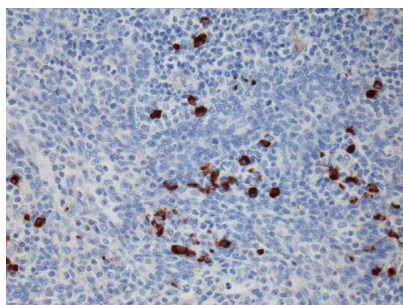


ELISA result showing specificity A titer ELISA using RM117. The plate was coated with different amounts of human IgG1. A serial dilution of RM117 was used as the primary antibody. An alkaline phosphatase conjugated anti-rabbit IgG as the secondary antibody.



ELISA result showing specificity ELISA showing RM117 does not react to monkey IgG. The plate was coated with Rhesus monkey IgG. A serial dilution of RM117 and a monkey IgG binding antibody (positive control) was used as the detection antibody.

IHC result Immunohistochemical staining of FFPE Tonsil tissue sections using Anti-Human IgG1 antibody RM117 at a 1:15,000 dilution.



Submit a product review to Biocompare.com

Submit a review of this product to Biocompare.com to receive a \$20 Amazon.com giftcard! Your reviews help your fellow scientists make the right decisions. Thank you for your contribution.



Anti-Human IgG1 IGHG1 Rabbit Monoclonal Antibody, Clone#RM117

For Research Use Only. Not for use in diagnostic procedures.