

Anti-Aldehyde Dehydrogenase Family 1 Member L1 ALDH1L1 Monoclonal Antibody

Catalog Number: M04615

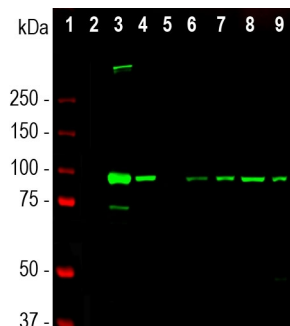
Overview

Product Name	Anti-Aldehyde Dehydrogenase Family 1 Member L1 ALDH1L1 Monoclonal Antibody
Reactive Species	Human, Mouse, Rat
Description	Boster Bio Anti-Aldehyde Dehydrogenase Family 1 Member L1 ALDH1L1 Monoclonal Antibody catalog # M04615. Tested in IF, IHC, ICC, WB applications. This antibody reacts with Human, Mouse, Rat.
Application	IF, IHC, ICC, WB
Clonality	Monoclonal
Formulation	Purified antibody at 1mg/mL in 50% PBS, 50% glycerol plus 5mM NaN ₃
Storage Instructions	Store at -20°C for one year. For short term storage and frequent use, store at 4°C for up to one month. Avoid repeated freeze-thaw cycles.
Host	Mouse
Uniprot ID	O75891

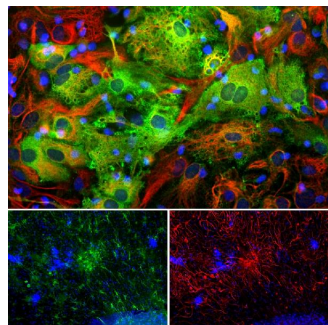
Technical Details

Immunogen	Amino acids 1-401 of human ALDH1L1 expressed in and purified from E. coli.
Concentration	0.5-1mg/ml, actual concentration vary by lot. Use suggested dilution ratio to decide dilution procedure.
Suggested Dilutions	<p>Dilute the sample so that the expected range of concentrations fall within the detection range of this kit.</p> <p>If the expected range of concentration is unknown, a pilot test should be conducted to decide the optimal dilution ratio for your samples.</p> <p>Some PubMed article(s) citing the expression level of this target are as follows:</p> <p>Boster Bio's internal QC testing used:</p> <p>WB: 1:5,000-1:10,000. IF/IHC: 1:1,000-1:2,000.</p>

Anti-Aldehyde Dehydrogenase Family 1 Member L1 ALDH1L1 Monoclonal Antibody (M04615) Images



Western blot analysis of rat and mouse tissue lysates using mouse mAb to ALDH1L1, M04615, dilution 1:5,000 in green: [1] protein standard (red), rat tissue lysates: [2] heart, [3] liver, [4] kidney, [5] lung, [6] brain, and [7] spinal cord; Also mouse tissue lysates: [8] brain, and [9] spinal cord. The band at 100kDa corresponds to ALDH1L1 protein. In line with published work, ALDH1L1 is a major protein of liver and CNS tissue.



Immunofluorescent analysis of mixed cortical neuron-glia cell culture from an E20 rat stained with mouse mAb to aldehyde dehydrogenase family 1 member L1 (ALDH1L1), M04615, dilution 1:1,000 in green, and costained with chicken pAb to vimentin, dilution 1:5,000 in red. The blue is DAPI staining of nuclear DNA. M04615 antibody produces strong cytoplasmic staining of astrocytic glial cells, while the other antibody labels the intermediate filament cytoskeleton in fibroblasts and other glial cells. Some cells, presumably developing astrocytes, are stained by both ALDH1L1 and vimentin and so appear yellow.

Submit a product review to Biocompare.com

Submit a review of this product to Biocompare.com to receive a \$20 Amazon.com giftcard! Your reviews help your fellow scientists make the right decisions. Thank you for your contribution.



Anti-Aldehyde Dehydrogenase Family 1 Member L1 ALDH1L1 Monoclonal Antibody