

Anti-ALDH1L1 Monoclonal Antibody

Catalog Number: M04615-1

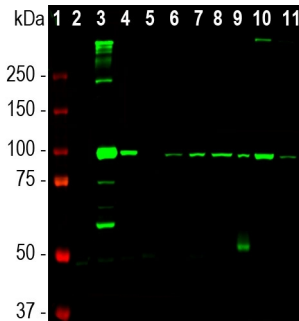
Overview

Product Name	Anti-ALDH1L1 Monoclonal Antibody
Reactive Species	Human, Mouse, Rat
Description	Boster Bio Anti-ALDH1L1 Monoclonal Antibody catalog # M04615-1. Tested in IF, IHC, WB applications. This antibody reacts with Human, Mouse, Rat.
Application	IF, IHC, WB
Clonality	Monoclonal
Formulation	Purified antibody at 1mg/mL in 50% PBS, 50% glycerol plus 5mM NaN ₃
Storage Instructions	Store at -20°C for one year. For short term storage and frequent use, store at 4°C for up to one month. Avoid repeated freeze-thaw cycles.
Host	Mouse
Uniprot ID	O75891

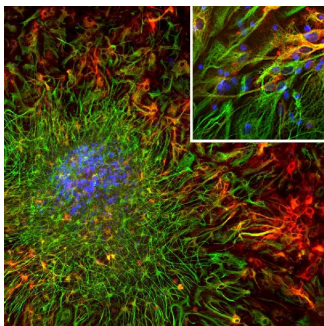
Technical Details

Immunogen	Amino acids 402-902 of human ALDH1L1 protein expressed in and purified from E. coli.
Concentration	0.5-1mg/ml, actual concentration vary by lot. Use suggested dilution ratio to decide dilution procedure.
Suggested Dilutions	<p>Dilute the sample so that the expected range of concentrations fall within the detection range of this kit.</p> <p>If the expected range of concentration is unknown, a pilot test should be conducted to decide the optimal dilution ratio for your samples.</p> <p>Some PubMed article(s) citing the expression level of this target are as follows:</p> <p>Boster Bio's internal QC testing used:</p> <p>WB: 1:5,000-1:10,000. IF/ICC and IHC: 1:1,000.</p>

Anti-ALDH1L1 Monoclonal Antibody (M04615-1) Images



Western blot analysis of different tissue and cell lysates using mouse mAb to ALDH1L1, M04615-1, dilution 1:5,000 in green: [1] protein standard (red), rat tissue lysates: [2] heart, [3] liver, [4] kidney, [5] lung, [6] brain, and [7] spinal cord; mouse tissue lysates: [8] brain, and [9] spinal cord; cell lysates: [10] NIH-3T3, and [11] HEK293. The band at 100kDa mark corresponds to ALDH1L1 protein.



Immunofluorescent analysis of cortical neuron-glial cell culture from E20 rat stained with mouse mAb to aldehyde dehydrogenase 1L1 (ALDH1L1), M04615-1, dilution 1:1,000 in red, and costained with chicken pAb to GFAP, dilution 1:5,000 in green. The blue is Hoechst staining of nuclear DNA. The M04615-1 antibody produces cytoplasmic staining of glial cells, while the other antibody labels the intermediate filament cytoskeleton in astrocytes and other glial cells. Some astrocytic cells express both ALDH1L1 and GFAP and appear yellow.

Submit a product review to Biocompare.com

Submit a review of this product to Biocompare.com to receive a \$20 Amazon.com giftcard! Your reviews help your fellow scientists make the right decisions. Thank you for your contribution.



Anti-ALDH1L1 Monoclonal Antibody