

Anti-ALDH1L1 Mouse Monoclonal Antibody [Clone ID: OTI2A6]

Catalog Number: M04615-4

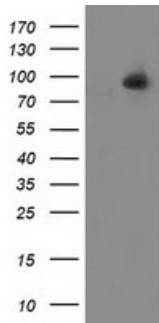
Overview

Product Name	Anti-ALDH1L1 Mouse Monoclonal Antibody [Clone ID: OTI2A6]
Reactive Species	Dog, Human, Monkey, Mouse, Rat
Description	Boster Bio ALDH1L1 mouse monoclonal antibody, clone OTI2A6 (formerly 2A6). Catalog# M04615-4. Tested in FC, WB. This antibody reacts with Human, Monkey, Mouse, Rat, Dog.
Application	Flow Cytometry, WB
Clonality	Monoclonal OTI2A6
Formulation	PBS (pH 7.3) containing 1% stabilizing protein, 50% glycerol and 0.02% sodium azide. This antibody is supplied in a stabilized formulation. Compatibility with conjugation reactions depends on the chemistry of the conjugation method used. For conjugation methods that are not compatible with the stabilizing components present in this formulation, a carrier-free antibody format is required.
Storage Instructions	Store at -20°C as received.
Host	Mouse
Uniprot ID	O75891

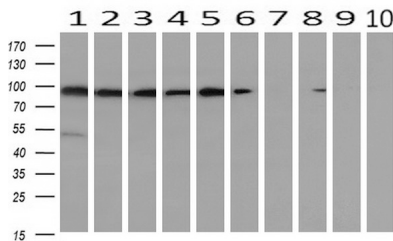
Technical Details

Immunogen	Full length human recombinant protein of human ALDH1L1 (NP_036322) produced in HEK293T cell.
Isotype	IgG1
Concentration	1 mg/ml
Purification	Purified from mouse ascites fluids or tissue culture supernatant by affinity chromatography (protein A/G)
Suggested Dilutions	WB 1:500~2000 Flow Cytometry 1:100

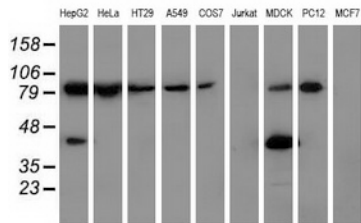
Anti-ALDH1L1 Mouse Monoclonal Antibody [Clone ID: OTI2A6] (M04615-4) Images



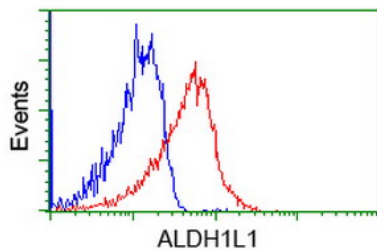
HEK293T cells were transfected with the pCMV6-ENTRY control (Left lane) or pCMV6-ENTRY ALDH1L1 (Right lane) cDNA for 48 hrs and lysed. Equivalent amounts of cell lysates (5 ug per lane) were separated by SDS-PAGE and immunoblotted with anti-ALDH1L1.



Western blot analysis of extracts (10ug) from 10 Human tissue by using anti-ALDH1L1 monoclonal antibody at 1:200 (1: Testis; 2: Omentum; 3: Uterus; 4: Breast; 5: Brain; 6: Liver; 7: Ovary; 8: Thyroid gland; 9: colon;10: spleen).



Western blot analysis of extracts (35ug) from 9 different cell lines by using anti-ALDH1L1 monoclonal antibody.



Flow cytometric Analysis of Jurkat cells

Submit a product review to Biocompare.com

Submit a review of this product to Biocompare.com to receive a \$20 Amazon.com giftcard! Your reviews help your fellow scientists make the right decisions. Thank you for your contribution.



Anti-ALDH1L1 Mouse Monoclonal Antibody [Clone ID: OTI2A6]

For Research Use Only. Not for use in diagnostic procedures.