

Anti-GARS1 Mouse Monoclonal Antibody [Clone ID: OTI4G4]

Catalog Number: M04618-1

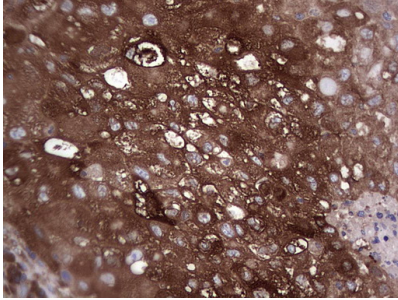
Overview

Product Name	Anti-GARS1 Mouse Monoclonal Antibody [Clone ID: OTI4G4]
Reactive Species	Human, Mouse, Rat
Description	Boster Bio GARS mouse monoclonal antibody, clone OTI4G4 (formerly 4G4). Catalog# M04618-1. Tested in IHC. This antibody reacts with Human, Mouse, Rat.
Conjugate	Unconjugated
Application	IHC
Clonality	Monoclonal OTI4G4
Formulation	PBS (pH 7.3) containing 1% stabilizing protein, 50% glycerol and 0.02% sodium azide. This antibody is supplied in a stabilized formulation. Compatibility with conjugation reactions depends on the chemistry of the conjugation method used. For conjugation methods that are not compatible with the stabilizing components present in this formulation, a carrier-free antibody format is required.
Storage Instructions	Store at -20°C for one year. For short term storage and frequent use, store at 4°C for up to one month. Avoid repeated freeze-thaw cycles.
Host	Mouse
Uniprot ID	P41250

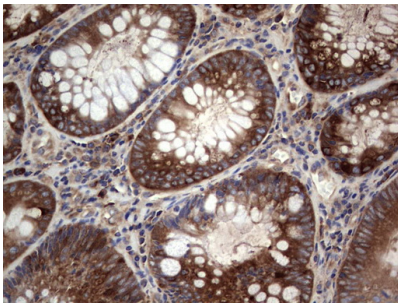
Technical Details

Immunogen	Full length human recombinant protein of human GARS (NP_002038) produced in HEK293T cell.
Isotype	IgG1
Concentration	1 mg/ml
Purification	Purified from mouse ascites fluids or tissue culture supernatant by affinity chromatography (protein A/G)
Suggested Dilutions	IHC 1:150

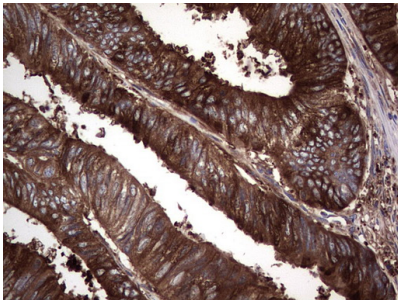
Anti-GARS1 Mouse Monoclonal Antibody [Clone ID: OTI4G4] (M04618-1) Images



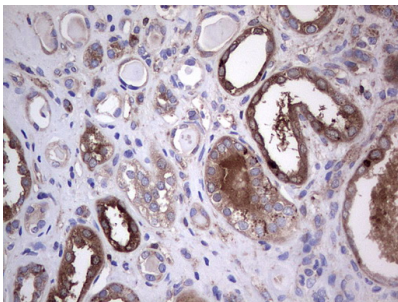
Immunohistochemical staining of paraffin-embedded Carcinoma of Human lung tissue using anti-GARS mouse monoclonal antibody. (Heat-induced epitope retrieval by 1 mM EDTA in 10mM Tris)



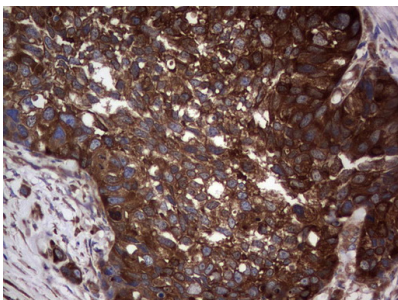
Immunohistochemical staining of paraffin-embedded Human colon tissue within the normal limits using anti-GARS mouse monoclonal antibody. (Heat-induced epitope retrieval by 1 mM EDTA in 10mM Tris)



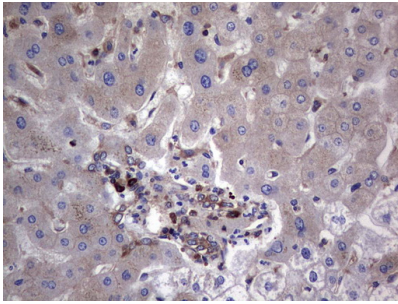
Immunohistochemical staining of paraffin-embedded Adenocarcinoma of Human colon tissue using anti-GARS mouse monoclonal antibody. (Heat-induced epitope retrieval by 1 mM EDTA in 10mM Tris)



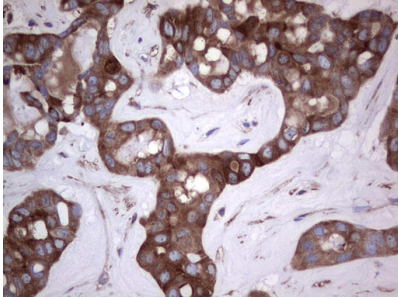
Immunohistochemical staining of paraffin-embedded Human Kidney tissue within the normal limits using anti-GARS mouse monoclonal antibody. (Heat-induced epitope retrieval by 1 mM EDTA in 10mM Tris)



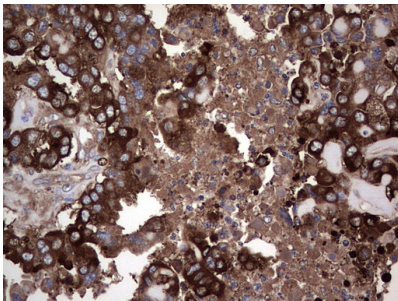
Immunohistochemical staining of paraffin-embedded Carcinoma of Human kidney tissue using anti-GARS mouse monoclonal antibody. (Heat-induced epitope retrieval by 1 mM EDTA in 10mM Tris)



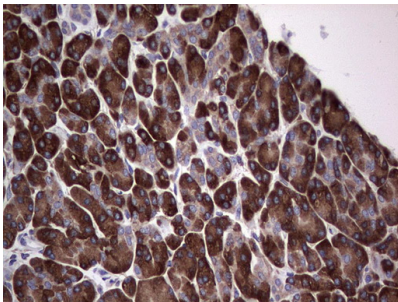
Immunohistochemical staining of paraffin-embedded Human liver tissue within the normal limits using anti-GARS mouse monoclonal antibody. (Heat-induced epitope retrieval by 1 mM EDTA in 10mM Tris)



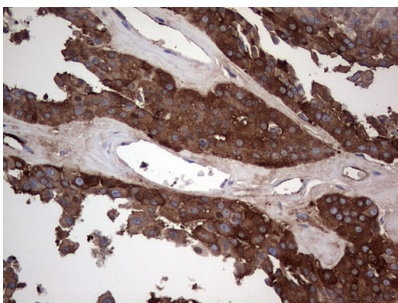
Immunohistochemical staining of paraffin-embedded Carcinoma of Human liver tissue using anti-GARS mouse monoclonal antibody. (Heat-induced epitope retrieval by 1 mM EDTA in 10mM Tris)



Immunohistochemical staining of paraffin-embedded Adenocarcinoma of Human ovary tissue using anti-GARS mouse monoclonal antibody. (Heat-induced epitope retrieval by 1 mM EDTA in 10mM Tris)

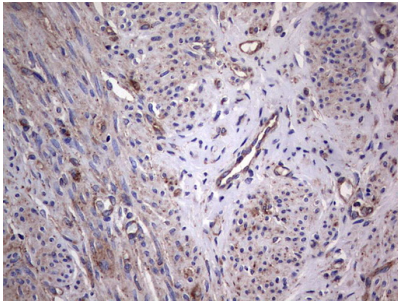


Immunohistochemical staining of paraffin-embedded Human pancreas tissue within the normal limits using anti-GARS mouse monoclonal antibody. (Heat-induced epitope retrieval by 1 mM EDTA in 10mM Tris)

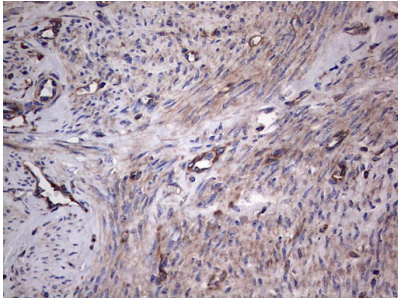


Immunohistochemical staining of paraffin-embedded Carcinoma of Human thyroid tissue using anti-GARS mouse monoclonal antibody. (Heat-induced epitope retrieval by 1 mM EDTA in 10mM Tris)

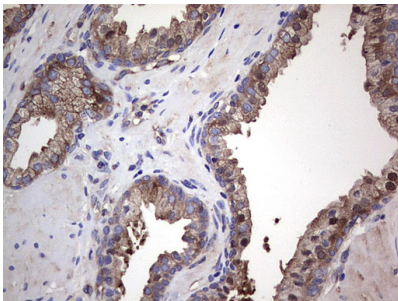
Immunohistochemical staining of paraffin-embedded Human endometrium tissue within the normal limits using anti-GARS mouse monoclonal antibody. (Heat-induced epitope retrieval



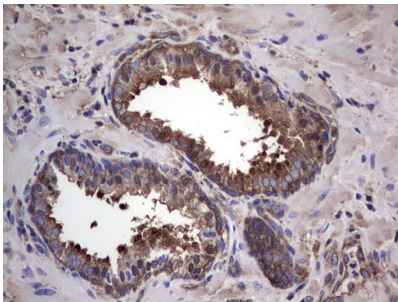
by 1 mM EDTA in 10mM Tris



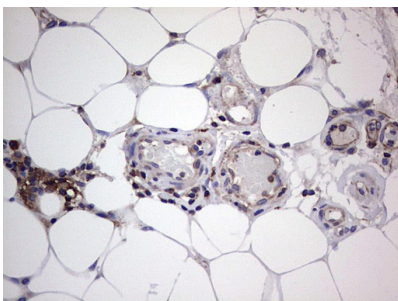
Immunohistochemical staining of paraffin-embedded Adenocarcinoma of Human endometrium tissue using anti-GARS mouse monoclonal antibody. (Heat-induced epitope retrieval by 1 mM EDTA in 10mM Tris



Immunohistochemical staining of paraffin-embedded Human prostate tissue within the normal limits using anti-GARS mouse monoclonal antibody. (Heat-induced epitope retrieval by 1 mM EDTA in 10mM Tris



Immunohistochemical staining of paraffin-embedded Carcinoma of Human prostate tissue using anti-GARS mouse monoclonal antibody. (Heat-induced epitope retrieval by 1 mM EDTA in 10mM Tris



Immunohistochemical staining of paraffin-embedded Carcinoma of Human bladder tissue using anti-GARS mouse monoclonal antibody. (Heat-induced epitope retrieval by 1 mM EDTA in 10mM Tris

Submit a product review to [Biocompare.com](https://www.biocompare.com)



Submit a review of this product to Biocompare.com to receive a \$20 Amazon.com giftcard! Your reviews help your fellow scientists make the right decisions. Thank you for your contribution.

Anti-GARS1 Mouse Monoclonal Antibody [Clone ID: OTI4G4]

For Research Use Only. Not for use in diagnostic procedures.