

Anti-Core Histone Macro-H2A.1 (H2AFY) Rabbit Monoclonal Antibody, Clone#RM248

Catalog Number: M04635-1

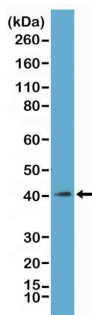
Overview

Product Name	Anti-Core Histone Macro-H2A.1 (H2AFY) Rabbit Monoclonal Antibody, Clone#RM248
Reactive Species	Human, Vertebrates
Description	Boster Bio Anti-Core Histone Macro-H2A.1 (H2AFY) Rabbit Monoclonal Antibody, Clone#RM248 (Catalog # M04635-1). Tested in WB, ICC, ELISA, Luminex applications. This antibody reacts with Human, Vertebrates.
Application	ELISA, ICC, WB, Luminex
Clonality	Monoclonal RM248
Formulation	50% Glycerol/PBS with 1% stabilizing protein and 0.09% sodium azide This antibody is supplied in a stabilized formulation. Compatibility with conjugation reactions depends on the chemistry of the conjugation method used. For conjugation methods that are not compatible with the stabilizing components present in this formulation, a carrier-free antibody format is required.
Storage Instructions	Store at -20°C for one year. Avoid repeated freeze-thaw cycles.
Host	Rabbit
Uniprot ID	Q9QZQ8

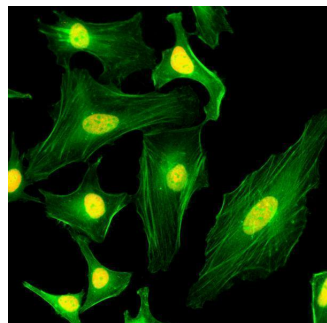
Technical Details

Immunogen	A peptide corresponding to the C-terminus of human Histone macroH2A1.
Cross Reactivity	This antibody reacts to the Core histone macro-H2A.1 (Histone macroH2A1) protein, independent of post-translational modifications. No cross-reactivity with other histone proteins.
Isotype	Rabbit IgG
Form	Liquid
Concentration	1 mg/mL
Purification	Protein A affinity purified from an animal origin-free culture supernatant
Suggested Dilutions	WB: 0.5 ug/mL - 2 ug/mL ICC: 1 ug/mL - 2 ug/mL ELISA: 0.2 ug/mL - 1 ug/mL Luminex: 0.2 ug/mL - 1 ug/mL.

Anti-Core Histone Macro-H2A.1 (H2AFY) Rabbit Monoclonal Antibody, Clone#RM248 (M04635-1) Images



Western Blotting result Western Blot of acid extracts from K562 cells, using RM248 at 1 ug/mL



ICC result Immunocytochemistry of HeLa cells, using anti-Histone macroH2A1 Rabbit mAb RM248 (red). Actin filaments have been labeled with fluorescein phalloidin (green).

Submit a product review to Biocompare.com

Submit a review of this product to Biocompare.com to receive a \$20 Amazon.com giftcard! Your reviews help your fellow scientists make the right decisions. Thank you for your contribution.



Anti-Core Histone Macro-H2A.1 (H2AFY) Rabbit Monoclonal Antibody, Clone#RM248

For Research Use Only. Not for use in diagnostic procedures.