

## Anti-Ephrin type-B receptor 3 EphB3 Monoclonal Antibody

Catalog Number: M04659

### About EPHB3

Anti Mesothelin Antibody recognizes Mesothelin that is a glycosyl-phosphatidylinositol-anchored glycoprotein present on the cell surface of various human solid tumors. The mesothelin (MSLN) gene encodes a 71-kDa precursor protein that is processed to a 40-kDa glycosylphosphatidylinositol-anchored protein that composes the mature portion and an NH2 terminal 31-kDa fragment called megakaryocyte-potentiating factor that is released from the cell. Mesothelin is a tumor differentiation antigen present at low levels on a restricted set of normal adult tissues, such as mesothelium, but aberrantly over expressed in mesotheliomas, ovarian, and pancreatic cancers. The biological functions of mesothelin remain elusive. A recent study showed that mesothelin binds to MUC16/CA125, and that this interaction mediates cell adhesion, suggesting that there may be an important role for MUC16/CA125 and mesothelin in the metastatic spread of ovarian cancer.

### Overview

|                      |  |
|----------------------|--|
| Product Name         | Anti-Ephrin type-B receptor 3 EphB3 Monoclonal Antibody  |
| Reactive Species     | Human  |
| Description          | Boster Bio Anti-Ephrin type-B receptor 3 EphB3 Monoclonal Antibody catalog # M04659. Tested in ELISA, IHC, WB applications. This antibody reacts with Human. |
| Application          | ELISA, IHC, WB   |
| Clonality            | Monoclonal 4A122D1   |
| Formulation          | Ascitic fluid containing 0.03% sodium azide.   |
| Storage Instructions | Store at -20°C for one year. For short term storage and frequent use, store at 4°C for up to one month. Avoid repeated freeze-thaw cycles.                   |
| Host                 | Mouse  |
| Uniprot ID           | P54753   |

### Technical Details

|                            |   |
|----------------------------|---|
| Immunogen                  | Purified recombinant fragment of EphB3 (aa39-212) expressed in E. Coli. |
| Predicted Reactive Species | Chimpanzee, Macaque   |
| Cross Reactivity           | No cross reactivity with other proteins.                                |
| Isotype                    | IgG   |
| Form                       | Liquid  |
| Concentration              | 1 mg/ml   |

| Purification        | Affinity purification   |
|---------------------|---|
| Suggested Dilutions | <p>Dilute the sample so that the expected range of concentrations fall within the detection range of this kit.</p> <p>If the expected range of concentration is unknown, a pilot test should be conducted to decide the optimal dilution ratio for your samples.</p> <p>Some PubMed article(s) citing the expression level of this target are as follows:</p> <p>Boster Bio's internal QC testing used:</p> <p>WB 1:500-1:2000</p> <p>IHC 1:200-1:1000</p> <p>ELISA 1:10000</p> |

## Anti-Ephrin type-B receptor 3 EphB3 Monoclonal Antibody (M04659) Images

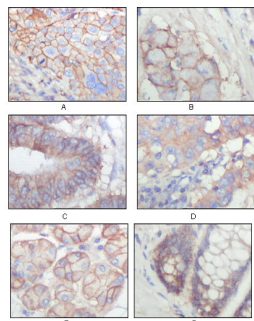


Figure 2. Immunohistochemistry validation of EPHB3 using Anti-Ephrin type-B receptor 3 EphB3 Monoclonal Antibody (M04659).

Immunohistochemistry (IHC) analysis of paraffin-embedded Human Lung squamous cell carcinoma (A)

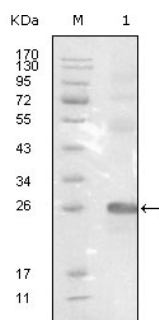


Figure 1. Western blotting validation for Anti-Ephrin type-B receptor 3 EphB3 Monoclonal Antibody M04659

Western Blot (WB) analysis using EphB3 Monoclonal Antibody against truncated EphB3-His recombinant protein. Electrophoresis was performed on a SDS-PAGE gel. To determine SDS-PAGE gel concentration

## Submit a product review to Biocompare.com

Submit a review of this product to Biocompare.com to receive a \$20 Amazon.com giftcard! Your reviews help your fellow scientists make the right decisions. Thank you for your contribution.



Anti-Ephrin type-B receptor 3 EphB3 Monoclonal Antibody