

Anti-SHARP1 (BHLHE41) Mouse Monoclonal Antibody [Clone ID: OTI5B1]

Catalog Number: M04668-1

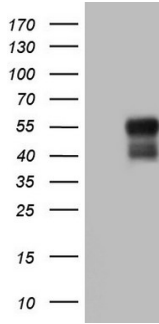
Overview

| | |
|----------------------|--|
| Product Name | Anti-SHARP1 (BHLHE41) Mouse Monoclonal Antibody [Clone ID: OTI5B1] |
| Reactive Species | Human |
| Description | Boster Bio BHLHE41 mouse monoclonal antibody, clone OTI5B1 (formerly 5B1). Catalog# M04668-1. Tested in IHC, WB. This antibody reacts with Human. |
| Application | IHC, WB |
| Clonality | Monoclonal OTI5B1 |
| Formulation | PBS (pH 7.3) containing 1% stabilizing protein, 50% glycerol and 0.02% sodium azide. This antibody is supplied in a stabilized formulation. Compatibility with conjugation reactions depends on the chemistry of the conjugation method used. For conjugation methods that are not compatible with the stabilizing components present in this formulation, a carrier-free antibody format is required. |
| Storage Instructions | Store at -20°C as received. |
| Host | Mouse |
| Uniprot ID | Q9C0J9 |

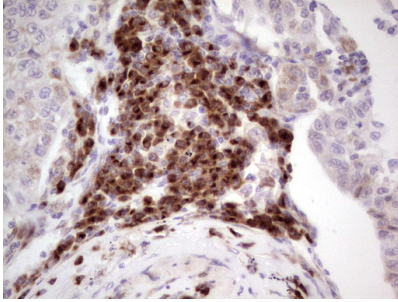
Technical Details

| | |
|---------------------|--|
| Immunogen | Human recombinant protein fragment corresponding to amino acids 1-297 of human BHLHE41 (NP_110389) produced in E.coli. |
| Isotype | IgG1 |
| Concentration | 1 mg/ml |
| Purification | Purified from mouse ascites fluids or tissue culture supernatant by affinity chromatography (protein A/G) |
| Suggested Dilutions | WB 1:2000 IHC 1:150 |

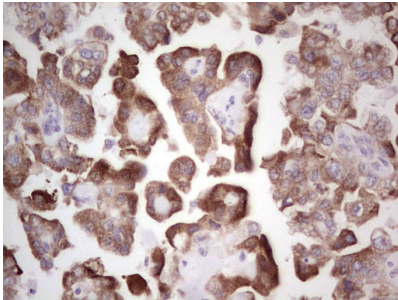
Anti-SHARP1 (BHLHE41) Mouse Monoclonal Antibody [Clone ID: OTI5B1] (M04668-1) Images



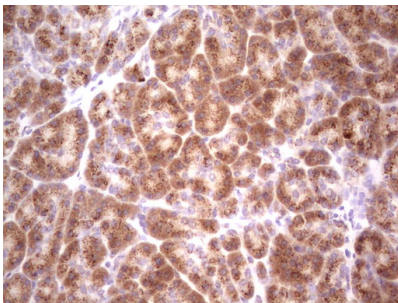
HEK293T cells were transfected with the pCMV6-ENTRY control (Left lane) or pCMV6-ENTRY BHLHE41 (Right lane) cDNA for 48 hrs and lysed. Equivalent amounts of cell lysates (5 ug per lane) were separated by SDS-PAGE and immunoblotted with anti-BHLHE41.



Immunohistochemical staining of paraffin-embedded Carcinoma of Human lung tissue using anti-BHLHE41 mouse monoclonal antibody. (M04668-1; heat-induced epitope retrieval by 1 mM EDTA in 10mM Tris

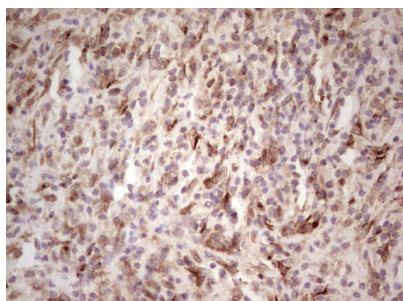
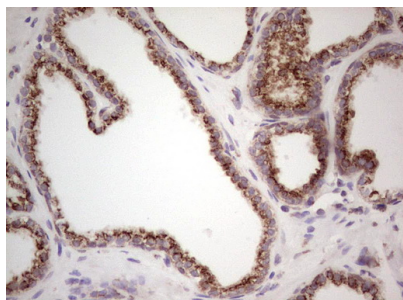
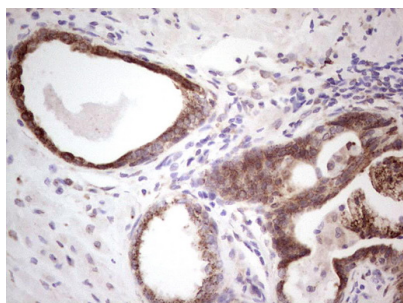


Immunohistochemical staining of paraffin-embedded Adenocarcinoma of Human ovary tissue using anti-BHLHE41 mouse monoclonal antibody. (M04668-1; heat-induced epitope retrieval by 1 mM EDTA in 10mM Tris



Immunohistochemical staining of paraffin-embedded Human pancreas tissue within the normal limits using anti-BHLHE41 mouse monoclonal antibody. (M04668-1; heat-induced epitope retrieval by 1 mM EDTA in 10mM Tris

Immunohistochemical staining of paraffin-embedded Human prostate tissue within the normal limits using anti-BHLHE41 mouse monoclonal antibody. (M04668-1; heat-induced epitope retrieval by 1 mM EDTA in 10mM Tris



Immunohistochemical staining of paraffin-embedded Carcinoma of Human prostate tissue using anti-BHLHE41 mouse monoclonal antibody. (M04668-1; heat-induced epitope retrieval by 1 mM EDTA in 10mM Tris

Immunohistochemical staining of paraffin-embedded Human lymph node tissue within the normal limits using anti-BHLHE41 mouse monoclonal antibody. (M04668-1; heat-induced epitope retrieval by 1 mM EDTA in 10mM Tris

Submit a product review to Biocompare.com

Submit a review of this product to Biocompare.com to receive a \$20 Amazon.com giftcard! Your reviews help your fellow scientists make the right decisions. Thank you for your contribution.



Anti-SHARP1 (BHLHE41) Mouse Monoclonal Antibody [Clone ID: OT15B1]

For Research Use Only. Not for use in diagnostic procedures.