

Anti-SPINT1 Mouse Monoclonal Antibody [Clone ID: OTI1E2]

Catalog Number: M04685-1

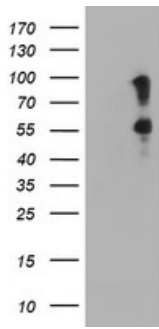
Overview

Product Name	Anti-SPINT1 Mouse Monoclonal Antibody [Clone ID: OTI1E2]
Reactive Species	Human
Description	Boster Bio SPINT1 mouse monoclonal antibody, clone OTI1E2 (formerly 1E2). Catalog# M04685-1. Tested in FC, IHC, WB. This antibody reacts with Human.
Application	Flow Cytometry, IHC, WB
Clonality	Monoclonal OTI1E2
Formulation	PBS (PH 7.3) containing 1% BSA, 50% glycerol and 0.02% sodium azide.
Storage Instructions	Store at -20°C as received.
Host	Mouse
Uniprot ID	O43278

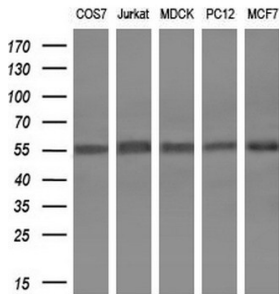
Technical Details

Immunogen	Full length human recombinant protein of human SPINT1 (NP_857593) produced in HEK293T cell.
Isotype	IgG1
Concentration	1 mg/ml
Purification	Purified from mouse ascites fluids or tissue culture supernatant by affinity chromatography (protein A/G)
Suggested Dilutions	Dilute the sample so that the expected range of concentrations fall within the detection range of this kit. If the expected range of concentration is unknown, a pilot test should be conducted to decide the optimal dilution ratio for your samples. Some PubMed article(s) citing the expression level of this target are as follows: For protocols, please visit https://www.bosterbio.com/protocol-and-troubleshooting/

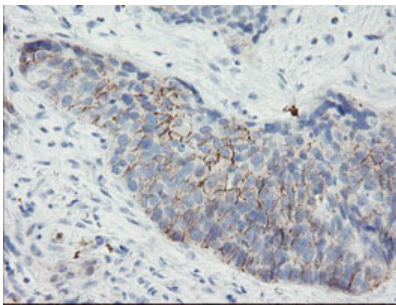
Anti-SPINT1 Mouse Monoclonal Antibody [Clone ID: OTI1E2] (M04685-1) Images



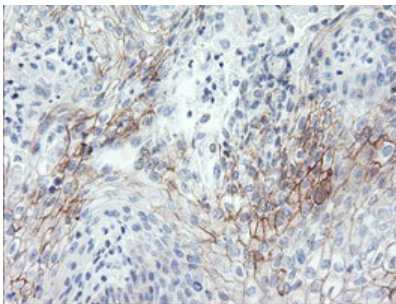
HEK293T cells were transfected with the pCMV6-ENTRY control (Left lane) or pCMV6-ENTRY SPINT1 (Right lane) cDNA for 48 hrs and lysed. Equivalent amounts of cell lysates (5 ug per lane) were separated by SDS-PAGE and immunoblotted with anti-SPINT1.



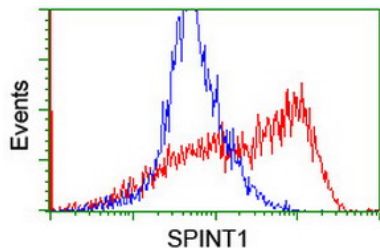
Western blot analysis of extracts (10ug) from 5 different cell lines by using anti-SPINT1 monoclonal antibody (1:200).



Immunohistochemical staining of paraffin-embedded Carcinoma of Human lung tissue using anti-SPINT1 mouse monoclonal antibody. (Heat-induced epitope retrieval by 10mM citric buffer)



Immunohistochemical staining of paraffin-embedded Carcinoma of Human bladder tissue using anti-SPINT1 mouse monoclonal antibody. (Heat-induced epitope retrieval by 10mM citric buffer)



HEK293T cells transfected with either SPINT1 (Myc-DDK-tagged) overexpress plasmid (Red) or empty vector control plasmid (Blue) were immunostained by anti-SPINT1 antibody (M04685-1)

Submit a review of this product to Biocompare.com to receive a \$20 Amazon.com giftcard! Your reviews help your fellow scientists make the right decisions. Thank you for your contribution.



Anti-SPINT1 Mouse Monoclonal Antibody [Clone ID: OTI1E2]