

Anti-KDM4C Mouse Monoclonal Antibody [Clone ID: OTI4B1]

Catalog Number: M04689-1

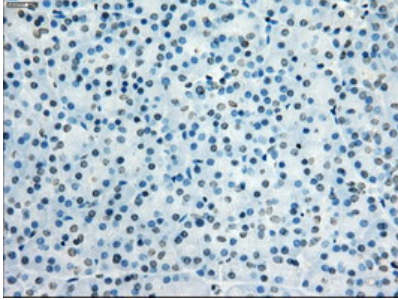
Overview

Product Name	Anti-KDM4C Mouse Monoclonal Antibody [Clone ID: OTI4B1]
Reactive Species	Human, Rat
Description	Boster Bio KDM4C mouse monoclonal antibody, clone OTI4B1 (formerly 4B1). Catalog# M04689-1. Tested in FC, IF, IHC. This antibody reacts with Human, Rat.
Application	Flow Cytometry, IF, IHC
Clonality	Monoclonal OTI4B1
Formulation	PBS (pH 7.3) containing 1% stabilizing protein, 50% glycerol and 0.02% sodium azide. This antibody is supplied in a stabilized formulation. Compatibility with conjugation reactions depends on the chemistry of the conjugation method used. For conjugation methods that are not compatible with the stabilizing components present in this formulation, a carrier-free antibody format is required.
Storage Instructions	Store at -20°C as received.
Host	Mouse
Uniprot ID	Q9H3R0

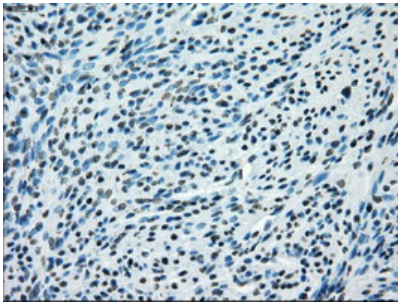
Technical Details

Immunogen	Full length human recombinant protein of human KDM4C (NP_055876) produced in HEK293T cell.
Isotype	IgG1
Concentration	1 mg/ml
Purification	Purified from mouse ascites fluids or tissue culture supernatant by affinity chromatography (protein A/G)
Suggested Dilutions	IHC 1:50 IF 1:100 Flow Cytometry 1:100

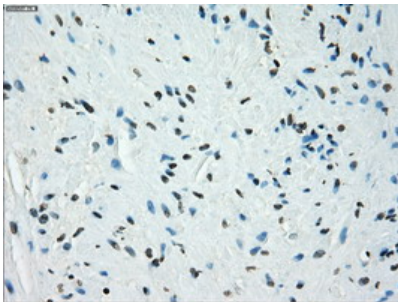
Anti-KDM4C Mouse Monoclonal Antibody [Clone ID: OTI4B1] (M04689-1) Images



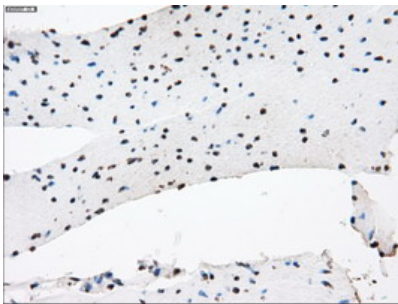
Immunohistochemical staining of paraffin-embedded Human pancreas tissue within the normal limits using anti-KDM4C mouse monoclonal antibody. (Heat-induced epitope retrieval by 10mM citric buffer)



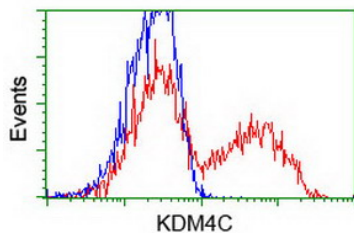
Immunohistochemical staining of paraffin-embedded Human endometrium tissue within the normal limits using anti-KDM4C mouse monoclonal antibody. (Heat-induced epitope retrieval by 10mM citric buffer)



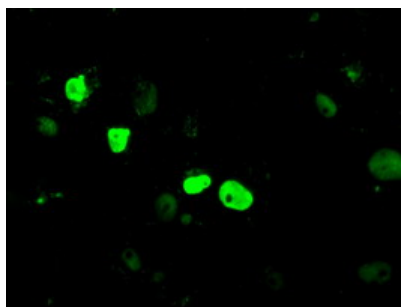
Immunohistochemical staining of paraffin-embedded Human prostate tissue within the normal limits using anti-KDM4C mouse monoclonal antibody. (Heat-induced epitope retrieval by 10mM citric buffer)



Immunohistochemical staining of paraffin-embedded Human colon tissue within the normal limits using anti-KDM4C mouse monoclonal antibody. (Heat-induced epitope retrieval by 10mM citric buffer)



HEK293T cells transfected with either KDM4C (Myc-DDK-tagged) overexpress plasmid (Red) or empty vector control plasmid (Blue) were immunostained by anti-KDM4C antibody (M04689-1)



Anti-KDM4C mouse monoclonal antibody (M04689-1) immunofluorescent staining of COS7 cells transiently transfected by pCMV6-ENTRY KDM4C.

Submit a product review to Biocompare.com

Submit a review of this product to Biocompare.com to receive a \$20 Amazon.com giftcard! Your reviews help your fellow scientists make the right decisions. Thank you for your contribution.



Anti-KDM4C Mouse Monoclonal Antibody [Clone ID: OTI4B1]

For Research Use Only. Not for use in diagnostic procedures.