

Anti-GBE1 Mouse Monoclonal Antibody [Clone ID: OTI1D11]

Catalog Number: M04694

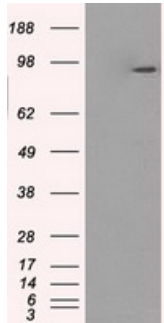
Overview

Product Name	Anti-GBE1 Mouse Monoclonal Antibody [Clone ID: OTI1D11]
Reactive Species	Human, Mouse, Rat
Description	Boster Bio GBE1 mouse monoclonal antibody, clone OTI1D11 (formerly 1D11). Catalog# M04694. Tested in FC, IF, IHC, IP, WB. This antibody reacts with Human, Mouse, Rat.
Application	Flow Cytometry, IP, IF, IHC, WB
Clonality	Monoclonal OTI1D11
Formulation	PBS (pH 7.3) containing 1% stabilizing protein, 50% glycerol and 0.02% sodium azide. This antibody is supplied in a stabilized formulation. Compatibility with conjugation reactions depends on the chemistry of the conjugation method used. For conjugation methods that are not compatible with the stabilizing components present in this formulation, a carrier-free antibody format is required.
Storage Instructions	Store at -20°C as received.
Host	Mouse
Uniprot ID	Q04446

Technical Details

Immunogen	Full length human recombinant protein of human GBE1 (NP_000149) produced in HEK293T cell.
Isotype	IgG1
Concentration	1.1 mg/ml
Purification	Purified from mouse ascites fluids or tissue culture supernatant by affinity chromatography (protein A/G)
Suggested Dilutions	WB 1:500~2000 IHC 1:50 IF 1:50~100 Flow Cytometry 1:100 IP 2ug/500ul

Anti-GBE1 Mouse Monoclonal Antibody [Clone ID: OTI1D11] (M04694) Images



HEK293T cells were transfected with the pCMV6-ENTRY control (Left lane) or pCMV6-ENTRY GBE1 (Right lane) cDNA for 48 hrs and lysed. Equivalent amounts of cell lysates (5 ug per lane) were separated by SDS-PAGE and immunoblotted with anti-GBE1.

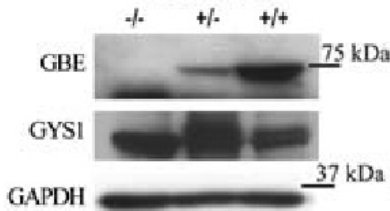
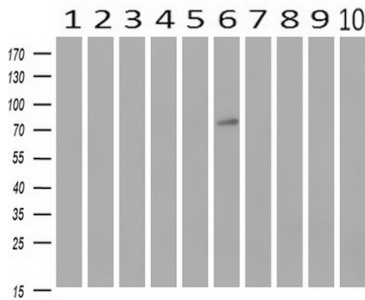
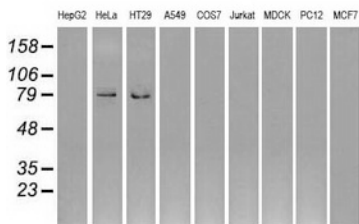


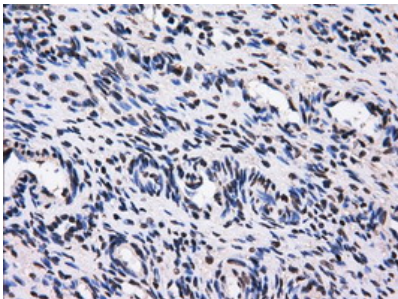
Figure from citation: Western Blot of GBE protein level by using anti-GBE antibody in mouse muscle extracts obtained from Gbe1^{-/-}, Gbe1^{+/-} and Gbe1^{+/+} embryos.



Western blot analysis of extracts (10ug) from 10 Human tissue by using anti-GBE1 monoclonal antibody at 1:500 (1: Testis; 2: Omentum; 3: Uterus; 4: Breast; 5: Brain; 6: Liver; 7: Ovary; 8: Thyroid gland; 9: colon; 10: spleen).

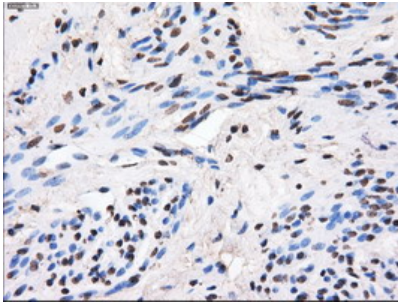


Western blot analysis of extracts (35ug) from 9 different cell lines by using anti-GBE1 monoclonal antibody (HepG2: human; HeLa: human; SVT2: mouse; A549: human; COS7: monkey; Jurkat: human; MDCK: canine; PC12: rat; MCF7: human).



Immunohistochemical staining of paraffin-embedded Human Ovary tissue within the normal limits using anti-GBE1 mouse monoclonal antibody. (Heat-induced epitope retrieval by 10mM citric buffer)

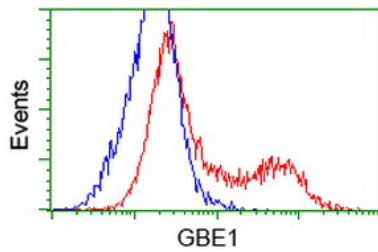
Immunohistochemical staining of paraffin-embedded Human



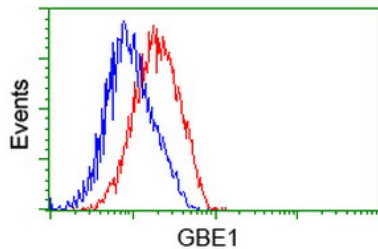
endometrium tissue within the normal limits using anti-GBE1 mouse monoclonal antibody. (Heat-induced epitope retrieval by 10mM citric buffer)



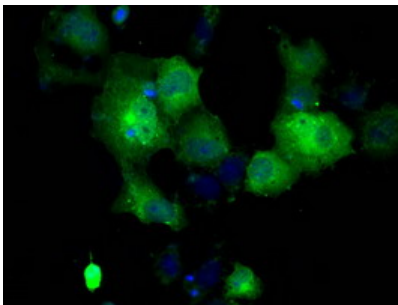
Immunohistochemical staining of paraffin-embedded Human colon tissue within the normal limits using anti-GBE1 mouse monoclonal antibody. (Heat-induced epitope retrieval by 10mM citric buffer)



HEK293T cells transfected with either GBE1 (Myc-DDK-tagged) overexpress plasmid (Red) or empty vector control plasmid (Blue) were immunostained by anti-GBE1 antibody (M04694)

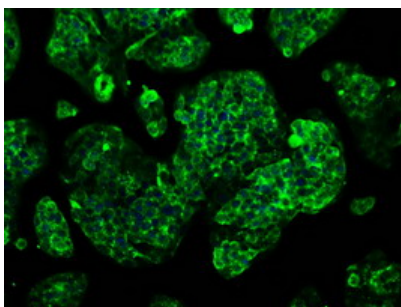


Flow cytometric Analysis of Jurkat cells



Anti-GBE1 mouse monoclonal antibody (M04694) immunofluorescent staining of COS7 cells transiently transfected by pCMV6-ENTRY GBE1.

Immunofluorescent staining of HepG2 cells using anti-GBE1 mouse monoclonal antibody (M04694).



Submit a product review to Biocompare.com

Submit a review of this product to Biocompare.com to receive a \$20 Amazon.com giftcard! Your reviews help your fellow scientists make the right decisions. Thank you for your contribution.



Anti-GBE1 Mouse Monoclonal Antibody [Clone ID: OT11D11]

For Research Use Only. Not for use in diagnostic procedures.